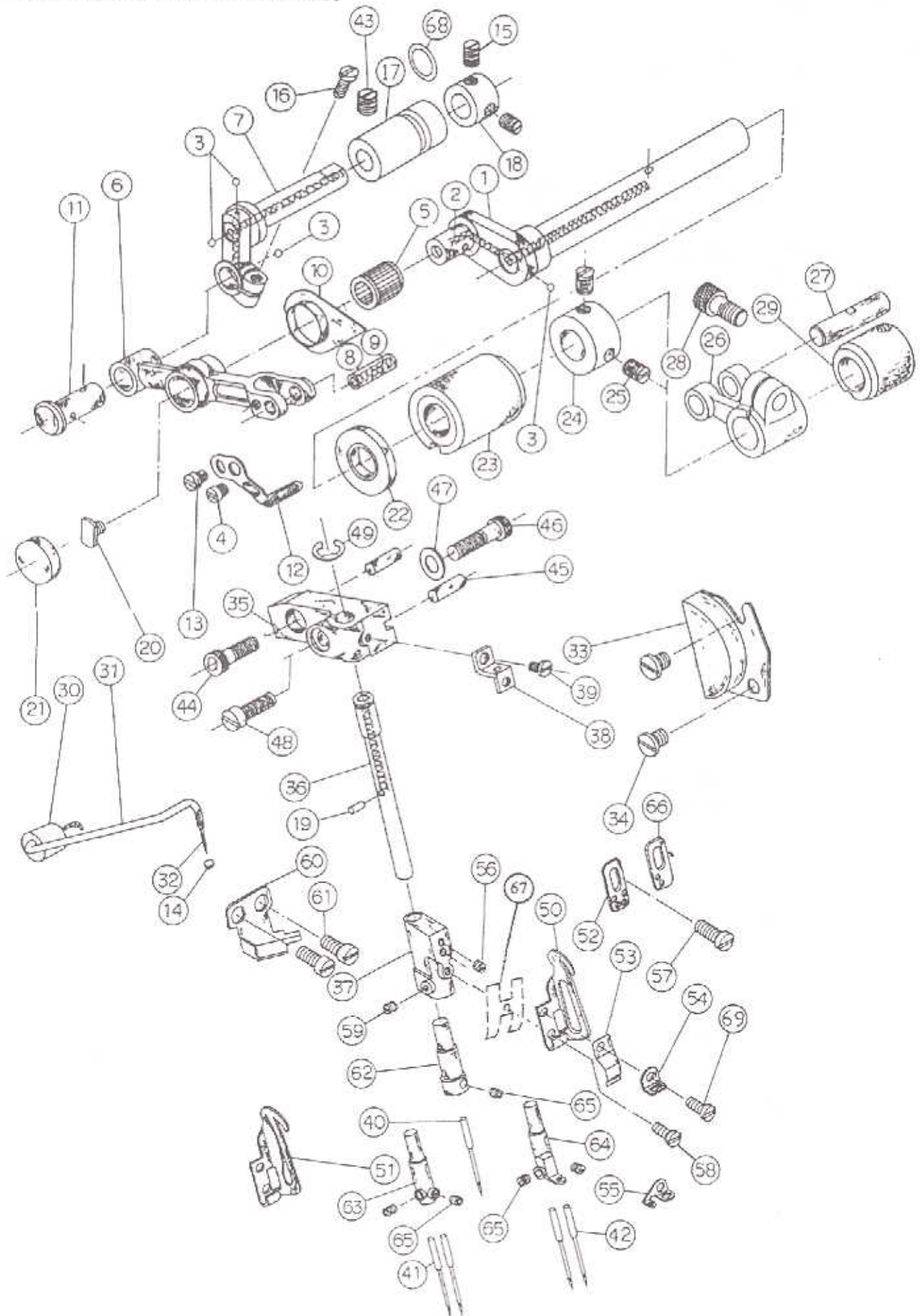


4. 針棒驅動軸與相關零件

NEEDLE DRIVING SHAFT COMPONENTS



4. 針棒驅動軸與相關零件

NEEDLE DRIVING SHAFT COMPONENTS

專用機型	序號	物料編號	名稱	單位/用量
	Ref.No.	Parts No.	Description	Amt./Req.
	01	2100000401	曲軸	Needle driving shaft 1
	02	66807	油線	Oil wick 1
	03	2100000403	孔塞	Plug 4
	04	8SB24560405A	螺絲	Screw 1
	05	90NB091213	軸承	Bushing 1
	06	2100000406	擺動臂	Needle driving lever 1
	07	2100000407	曲柄	Holder 1
	08	2100000408	樞銷	Crank pin 1
	09	66807	油線	Oil wick 1
	10	2100000410	聚油片	Oil shield 1
	11	2100000411	樞銷	Crank pin 1
	12	2100000412	驅動架	Needle thread presser 1
	13	8SB24560405A	螺絲	Screw 1
	14	2100000327	孔塞	Plug 1
	15	8SN44400400E	螺絲	Screw 2
	16	8SC36401006D	螺絲	Screw 1
	17	2100000417	軸襯	Bushing 1
	18	2100000418	定位環	Thrust collar 1
	19	2100000419	油線	Oil wick 1
	20	2100000420	螺絲	Bolt 1
	21	2100000421	護蓋	Cover 1
	22	2100000422	油封	Oil seal 1
	23	2100000423	軸襯	Bushing 1
	24	2100000424	定位環	Thrust collar 1
	25	8SG56320500A	螺絲	Screw 2
	26	2100000426	曲柄	Forked crank 1
	27	2100000427	樞銷	Pin 1
	28	8MM06301210A	螺絲	Screw 1
	29	2100000429	軸襯	Bushing 1
	30	2100000430	孔塞	Oil wick cover bushing 1
	31	66791	油管	Oil tube 1
	32	66806	油線	Oil wick 1
	33	2100000433	防塵蓋	Cover 1
	34	8SC44400508D	螺絲	Screw 2
	35	2100000435	針棒支持臂	Needle Bar Base 1
	36	2100000436	針棒	Needle bar 1
	37	2100000437	針留座	Needle clamp base 1
	38	2100000438	腳座	Needle thread guide 1
	39	8SB36400406A	螺絲	Screw 1
	40	66732-11	針	Needle 1
	41	66732-11	針	Needle 2
	42	66732-11	針	Needle 2
	43	8SG60280700A	螺絲	Screw 1
	44	8MM06402010A	螺絲	Screw 1
	45	90ST0414	銷	Pin 2
	46	8MM06402310A	螺絲	Screw 1
	47	2100000323	墊圈	Washer 1
	48	8SB48281208A	螺絲	Screw 1
	49	90ER070	E形扣環	Retainer E 1
03	50	2100130450	揚線環	Needle thread take-up lever 1
	51	2100000451	揚線環	Needle thread take-up lever 1
07	52	2100040452	導線	Needle thread guide 1
	53	2100000453	簧片	presser spring 1
04	54	2100030454	導線	Needle thread guide 1
11	55	2100050455	導線	Needle thread guide 1
	56	8SG36400400A	螺絲	Screw 1
	57	8SB36400406A	螺絲	Screw 1
	58	8SB32440405A	螺絲	Screw 1
	59	8SN44400400E	螺絲	Screw 1
	60	2110000460	集油杯	Oil reservoir asm 1
	61	8SB36400406A	螺絲	Screw 2
02	62	-----	針留	Needle clamp 1
07	63	-----	針留	Needle clamp 1
11	64	-----	針留	Needle clamp 1
	65	8SH32440300A	螺絲	Screw 5
05	66	2100030466	導線	Needle thread guide 1
	67	-----	停用	
	68	2100000468	O型油環	Needle clamp base cover 1
	69	8SB32440505A	螺絲	Screw 1

02 For SC9003

03 For SC9013

04 For SC9003, SC9004

07 For SC9004

11 For SC9005