

金輪牌工業用縫紉機

Golden wheel industrial sewing machine



零件分解圖

PARTS BOOK

No:U8671BFTLL1ABA02

MODEL: CSU-8671BFT/LL-1AB
CSU-8672BFT/LL-1AB

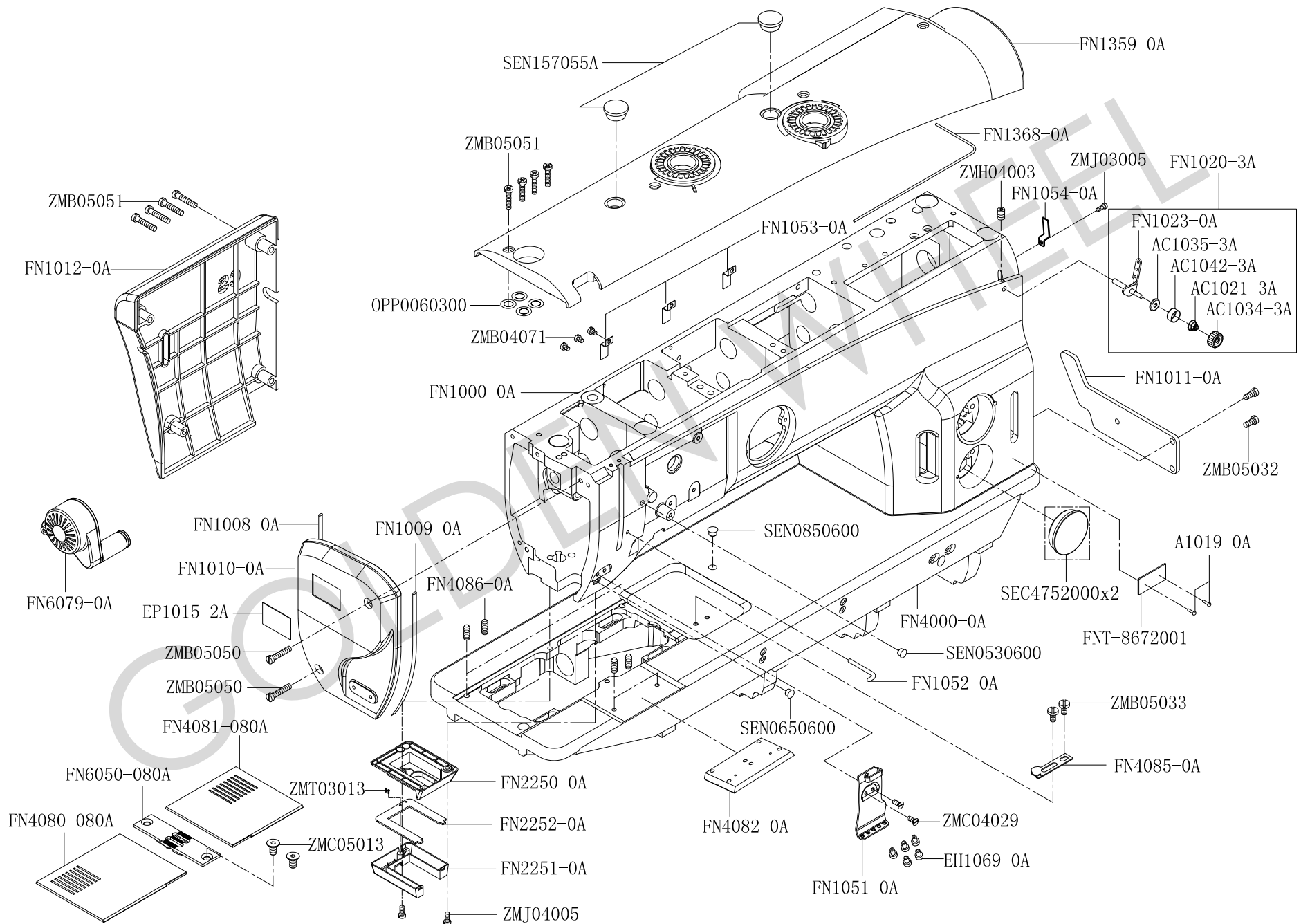


啓翔股份有限公司
CHEE SIANG INDUSTRIAL CO.,LTD.

MODEL: CSU-8671BFT/LL-1AB、CSU-8672BFT/LL-1AB

索引	INDEX	PAGE
1 外觀部件-----	MISCELLANEOUS COVERS-----	2-3
2 上軸、下軸部件-----	UPPER & LOWER SHAFT MECHANISM-----	4-5
3 針棒、天秤機構-----	NEEDLE BAR & THREAD TAKE-UP MECHANISM-----	6-7
4 CSU-8671BFT/LL-1AB縫綫壓力調整機構---	THREAD TENSION REGULATING MECHANISM-----	8-9
5 CSU-8672BFT/LL-1AB縫綫壓力調整機構---	THREAD TENSION REGULATING MECHANISM-----	10-11
6 CSU-8671縫綫壓力調整機構-----	THREAD TENSION REGULATING MECHANISM-----	12-13
7 CSU-8672縫綫壓力調整機構-----	THREAD TENSION REGULATING MECHANISM-----	14-15
8 壓腳機構-----	PRESSER LIFT MECHANISM-----	16-19
9 繞綫器部件-----	BOBBIN COVERS-----	20-21
10 針距調節機構-----	STITCH LENGTH REGULATING MECHANISM-----	22-23
11 水平送料機構-----	PLANE FEED MECHANISM-----	24-25
12 上下送料機構-----	UPPER & LOWER FEED MECHANISM-----	26-27
13 釜軸臺機構（左）-----	HOOK POST MECHANISM (LEFT)-----	28-29
14 釜軸臺機構（右）-----	HOOK POST MECHANISM (RIGHT)-----	30-31
15 切綫機構-----	THREAD TRIMMING MECHANISM-----	32-33
16 控制機構-----	FEED MECHANISM-----	34-35
17 潤滑機構-----	LUBRICATING MECHANISM-----	36-37
18 附件（一）-----	ACCESSORIES(一)-----	38-39
19 附件（二）-----	ACCESSORIES(二)-----	40-41
20 零件號碼與頁數對照表-----	NUMERICAL PARTS-LIST-----	42-45

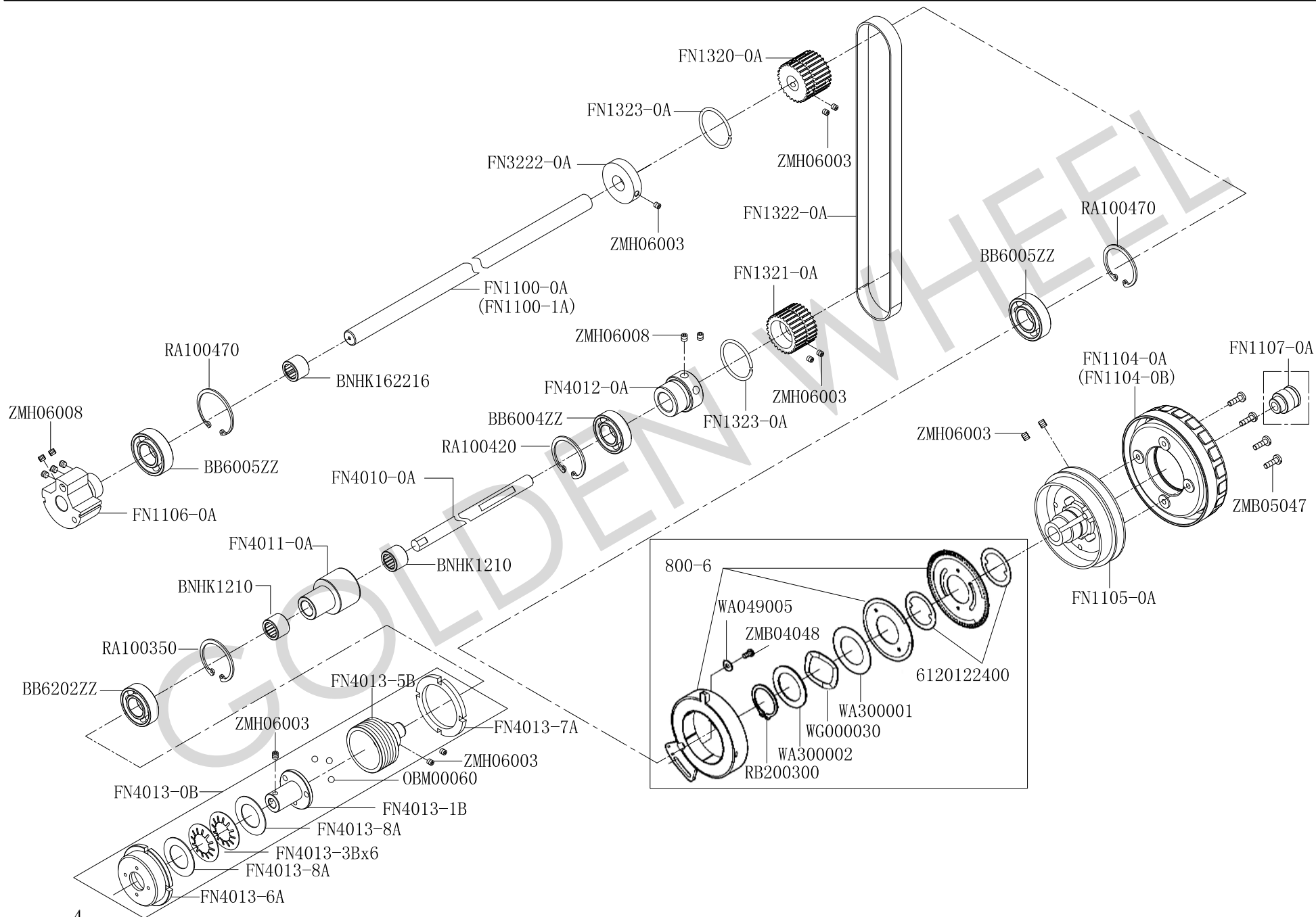
1. CSU-8671BFT/LL-1AB、CSU-8672BFT/LL-1AB 外观部件 MISCELLANEOUS COVERS



1. CSU-8671BFT/LL-1AB、CSU-8672BFT/LL-1AB 外觀部件 MISCELLANEOUS COVERS

零件號碼 Parts No.	零件名稱 Name of Parts	件數 QTY	備注 Remarks	零件號碼 Parts No.	零件名稱 Name of Parts	件數 QTY	備注 Remarks
A1019-0A	鉚釘----- Rivet-----	2		FN4082-0A	角板(前)----- Corner Board (front)-----	1	
AC1020-3A	紗拉組----- Thread Tension Regulator Assembly--	1		FN4085-0A	彈簧片----- Spring Flake-----	1	
AC1021-3A	壓綫彈簧----- Tension Spring-----	1		FN4086-0A	螺絲----- Screw-----	4	
AC1034-3A	紗拉組螺帽----- Adjusting Nut-----	1		FN6050-080A	針板----- Plate-----	1	
AC1035-3A	壓綫盤----- Thread Guide Disk-----	1		FNT-8672001	銘牌----- Nameplate-----	1	
AC1038-3A	綫掛組----- Thread Guide Assembly-----	1		OPP0060300	O型環----- O-ring-----	4	
AC1042-3A	彈簧隔環----- Spacer Partition Ring-----	1		SEC4752000	油塞----- Rubber Plug-----	1	
EH1069-0A	陶瓷綫挂----- Pottery Thread Guide-----	5		SEN0530600	油塞----- Rubber Plug-----	1	
EP1015-2A	標貼----- Sign-----	1		SEN0650600	油塞----- Rubber Plug-----	1	
FN1000-0A	機頭----- Machine-----	1		SEN0850600	油塞----- Rubber Plug-----	1	
FN1008-0A	橡膠墊----- Rubber Mat-----	1		SEN157055A	油塞----- Rubber Plug-----	2	
FN1009-0A	橡膠墊----- Rubber Mat-----	1		SEN2600800	油塞----- Rubber Plug-----	2	
FN1010-0A	上側蓋----- Upside Lid-----	1		ZMB04071	螺絲----- Screw(M4-0.7x6)-----	3	
FN1011-0A	板----- Board-----	1		ZMB05033	螺絲----- Screw(M5-0.8x6.9)-----	4	
FN1012-0A	橫蓋----- Transverse Lid-----	1		ZMB05050	螺絲----- Screw(M5-0.8x16)-----	2	
FN1020-0A	橫蓋----- Transverse Lid-----	1		ZMB05051	螺絲----- Screw(M5-0.8x25)-----	8	
FN1020-3A	紗拉組----- Thread Tension Regulator Assembly--	1		ZMC04029	螺絲----- Screw(M4-0.7x8)-----	2	
FN1023-0A	綫挂組----- Thread Guide Assembly-----	1		ZMC05013	螺絲----- Screw(M5-0.8x10)-----	2	
FN1051-0A	綫挂----- Thread Guide-----	1		ZMH05009	螺絲----- Screw(M5-0.8x6)-----	1	
FN1052-0A	綫挂----- Thread Guide-----	1		ZMJ04005	螺絲----- Screw(M4-0.7x8)-----	2	
FN1053-0A	壓板----- Press Board-----	3		ZMT03013	螺絲----- WOOD Screw-----	2	
FN1054-0A	壓板----- Plate-----	1		ZMJ03005	螺絲----- Screw(M3-0.5)-----	1	
FN1359-0A	上蓋組件----- Upper Lid Assembly-----	1					
FN1368-0A	防震墊----- Shockproof Mat-----	1					
FN2250-0A	防油座----- Prevent Grease Seat-----	1					
FN2251-0A	照明燈座----- Head lamp Seat-----	1					
FN2252-0A	綫路板----- Circuitry Board-----	1					
FN4000-0A	底座----- Base-----	1					
FN4080-080A	角板(左)----- Corner Board (left)-----	1					
FN4081-080A	角板(右)----- Corner Board (right)-----	1					

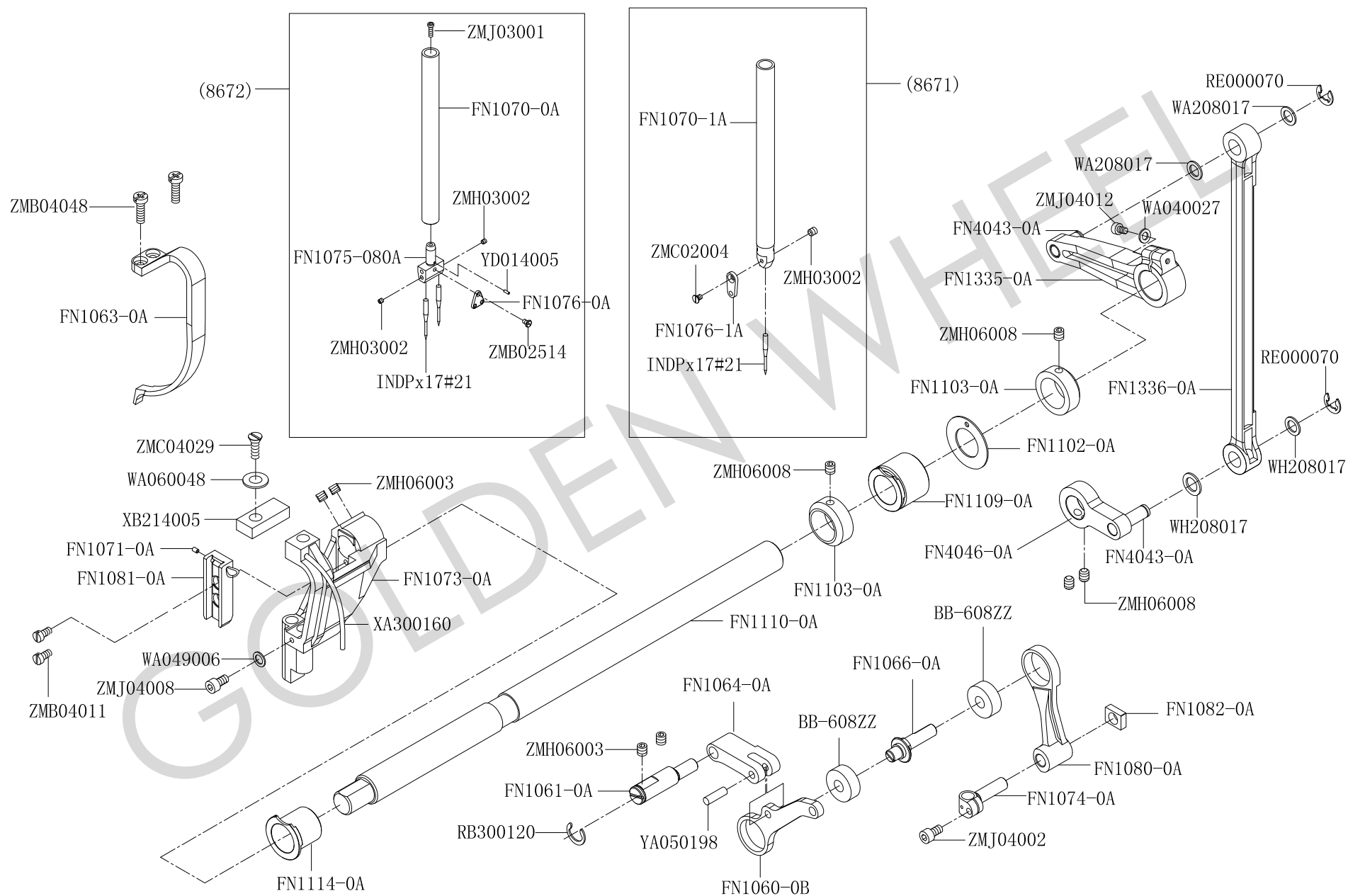
2. CSU-8671BFT/LL-1AB、CSU-8672BFT/LL-1AB 上轴、下轴部件 UPPER & LOWER SHAFT MECHANISM



2. CSU-8671BFT/LL-1AB、CSU-8672BFT/LL-1AB 上軸、下軸部件UPPER & LOWER SHAFT MECHANISM

零件號碼 Parts No.	零件名稱 Name of Parts	件數 QTY	備注 Remarks	零件號碼 Parts No.	零件名稱 Name of Parts	件數 QTY	備注 Remarks
6120122400	墊圈-----Washer-----	2		RA100350	扣環-----Retaining Ring-----	1	
800-3C	感測器組-----Detector Bracket-----	1		RA100420	扣環-----Retaining Ring-----	2	
BB6004ZZ	軸承-----Bearing-----	1		RA100470	扣環-----Retaining Ring-----	2	
BB6005ZZ	軸承-----Bearing-----	2		RB200300	扣環-----Retaining Ring-----	1	
BB6202ZZ	軸承-----Bearing-----	1		WA049005	墊圈-----Washer-----	1	
BNHK1210	軸承-----Bearing-----	2		WA300001	墊圈-----Washer-----	1	
BNHK162216	軸承-----Bearing-----	1		WA300002	墊圈-----Washer-----	1	
FN1100-0A	上軸-----Upper Shaft-----	1		WG000030	彈性墊圈-----Flexibility Washer-----	1	
FN1104-0A	手輪-----Hand Wheel-----	1		WH225002	墊圈-----Washer-----	2	
FN1105-0A	皮帶盤-----Strap Tray-----	1		ZMB04048	螺絲-----Screw(M4-0.7x9.5)-----	1	
FN1106-0A	凸輪-----Cam-----	1		ZMB05047	螺絲-----Screw(M5-0.8x16)-----	4	
FN1320-0A	皮帶輪-----Strap Wheel-----	1		ZMH06003	螺絲-----Screw(M6-1.0x8)-----	11	
FN1321-0A	皮帶輪-----Strap Wheel-----	1		ZMH06008	螺絲-----Screw(M6-1.0x6)-----	7	
FN1322-0A	皮帶-----Strap-----	2					
FN1323-0A	皮帶輪邊環-----Strap Wheel Border Ring-----	2					
FN3222-0A	驅動輪-----Driving Wheel-----	1					
FN4010-0A	軸-----Shaft-----	1					
FN4011-0A	下軸承套-----Lower Bearing Sheath-----	1					
FN4012-0A	連接套-----Connect Sheath-----	1					
FN4013-1A	離合器 (左) -----Clutch (left)-----	1					
FN4013-3A	彈性套圈-----Flexibility Ferrule-----	1					
FN4013-5A	離合器組 (右) -----Clutch (right)-----	1					
FN4013-6A	定位圈-----Washer-----	1					
FN4013-7A	調節螺母-----Adjusting Nut-----	1					
FN4013-8A	墊片-----Washer-----	2					
FN4013-0B	離合器組件-----Clutch Assembly-----	1					
FN4013-1B	離合器 (左) -----Clutch (left)-----	1					
FN4013-3B	彈簧-----Spring-----	1					
FN4013-5B	離合器組件 (右) -----Clutch (right)-----	1					
OBM00060	鋼珠-----Steel Ball-----	3					

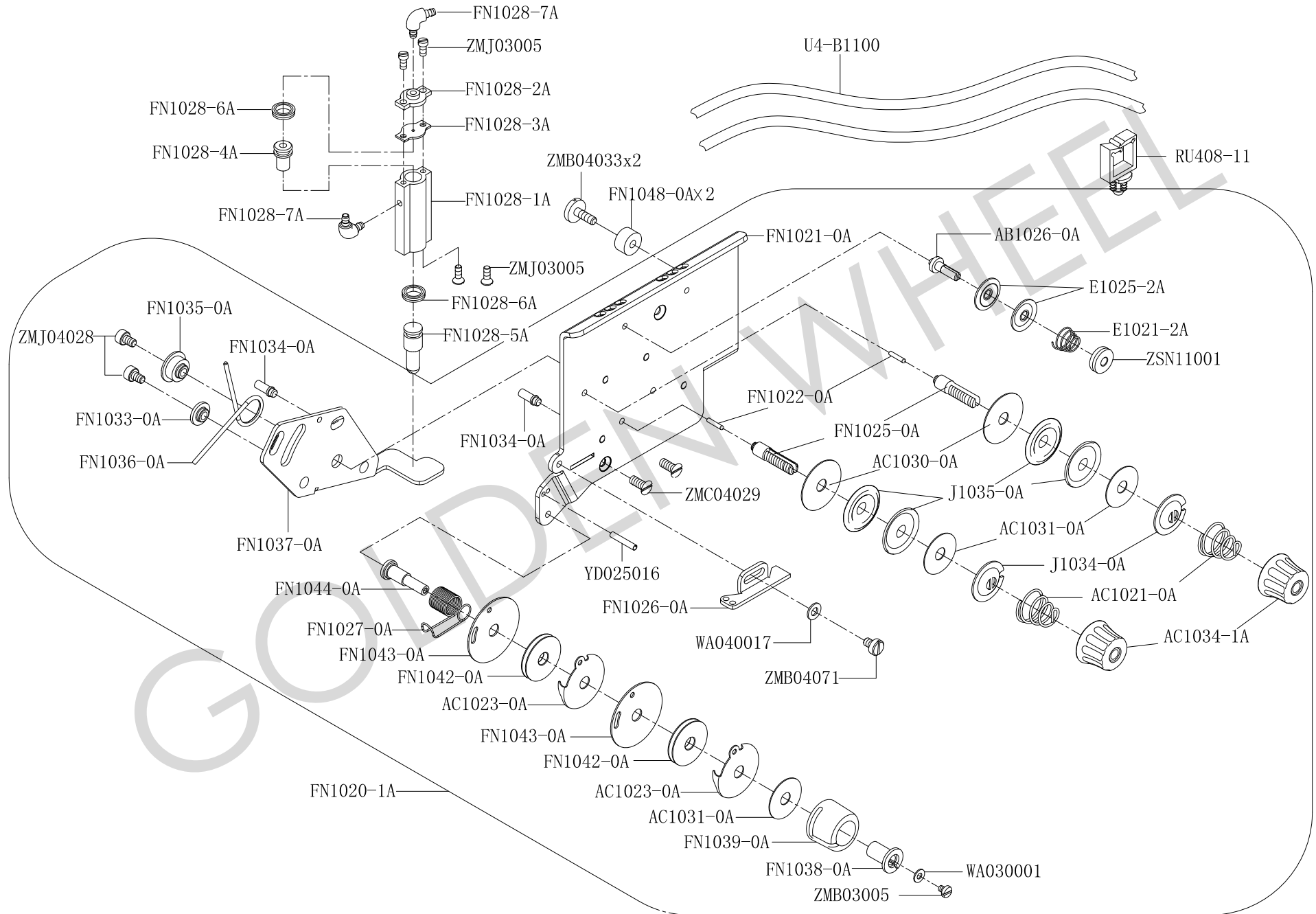
3. CSU-8671BFT/LL-1AB、CSU-8672BFT/LL-1AB 针棒、天秤机构 NEEDLE BAR & THREAD TAKE-UP MECHANISM



3. CSU-8671BFT/LL-1AB、CSU-8672BFT/LL-1AB 針棒、天秤機構 NEEDLE BAR & THREAD TAKE-UP MECHANISM

零件號碼 Parts No.	零件名稱 Name of Parts	件數 QTY	備注 Remarks	零件號碼 Parts No.	零件名稱 Name of Parts	件數 QTY	備注 Remarks
BB-608ZZ	軸承----- Bearing-----	2		WA040027	墊圈----- Washer-----	1	
FN1060-0B	天秤----- Thread Take-up Level-----	1		WA049006	墊圈----- Washer-----	1	
FN1061-0A	天秤偏心銷----- Thread Take-up Level Pin-----	1		WA060048	墊圈----- Washer-----	1	
FN1063-0A	天秤蓋----- Thread Take-up Level Lid-----	1		WH208017	墊圈----- Washer-----	4	
FN1064-0A	天秤連杆----- Thread Take-up Level Connecting-----	1		XA300160	油繩----- Oil Wick-----	1	
FN1066-0A	針棒連接軸----- Needle Bar Connecting Rod-----	1		XB214005	油棉----- Oil Cotton-----	1	
FN1070-0A	針棒(雙針用)----- Needle Bar-----	1		YA050198	銷----- Pin-----	1	
FN1070-1A	針棒(單針用)----- Needle Bar-----	1		YD014005	銷----- Pin-----	1	
FN1071-0A	扣件----- Fastener-----	1		ZMB02514	螺絲----- Screw(M2.5-0.45x4)-----	1	
FN1072-0A	盛油器----- Block Oil Utensil-----	1		ZMB04011	螺絲----- Screw(M4-0.7x8)-----	2	
FN1073-0A	針柱臺----- Needle Pole Dais-----	1		ZMB04048	螺絲----- Screw(M4-0.7x9.5)-----	2	
FN1074-0A	針棒鉗----- Needle Bar Clamp-----	1		ZMC02004	螺絲----- Screw(M2-0.4x4)-----	1	
FN1075-080A	針鐮----- Needle Clamp-----	1		ZMC04029	螺絲----- Screw(M4-0.7x8)-----	1	
FN1076-0A	綫挂(雙針用)----- Thread Guide-----	1		ZMH03002	螺絲----- Screw(M3-0.5x3)-----	3	
FN1076-1A	綫挂(單針用)----- Thread Guide-----	1		ZMH06003	螺絲----- Screw(M6-1.0x8)-----	4	
FN1080-0A	針棒連杆組----- Needle Bar Connecting Rod-----	1		ZMH06008	螺絲----- Screw(M6-1.0x6)-----	4	
FN1081-0A	滑塊座----- Slide Dollop Seat-----	1		ZMJ03001	螺絲----- Screw(M3-0.5x10)-----	1	
FN1082-0A	導向塊----- Guide Seat-----	1		ZMJ04002	螺絲----- Screw(M4-0.7x10)-----	1	
FN1102-0A	墊片----- Washer-----	1		ZMJ04008	螺絲----- Screw(M4-0.7x6)-----	1	
FN1103-0A	固定環----- Regulator Ring-----	2		ZMJ04012	螺絲----- Screw(M4-0.7x16)-----	1	
FN1109-0A	套----- Bushing-----	1					
FN1110-0A	針送軸----- Spindle-----	1					
FN1114-0A	套----- Bushing-----	1					
FN1335-0A	針棒搖動臂----- Needle Bar Agitate Arm-----	1					
FN1336-0A	針棒搖動杆組件----- Needle Bar Agitate Rod Assembly-----	1					
FN4043-0A	銷----- Pin-----	1					
FN4043-0A	銷----- Pin-----	1					
FN4046-0A	送料軸連杆----- Shaft Connecting Rod-----	1					
RB300120	扣環----- Retaining Ring-----	1					
RE000070	扣環----- Retaining Ring-----	2					

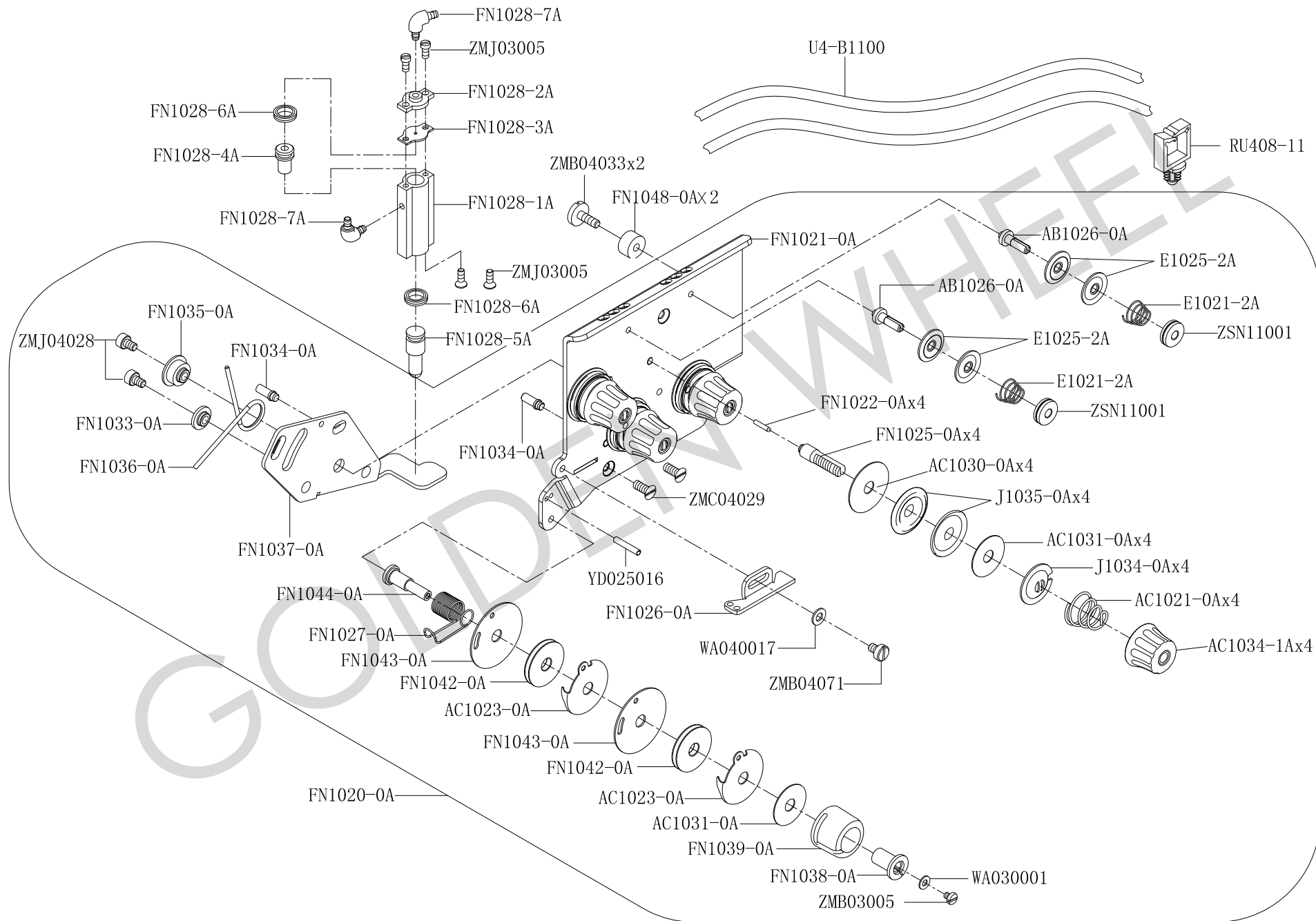
4. CSU-8671BFT/LL-1AB 缝线压力调整机构 THREAD TENSION REGULATING MECHANISM



4. CSU-8671BFT/LL-1AB 縫綫壓力調整機構 THREAD TENSION REGULATING MECHANISM

零件號碼 Parts No.	零件名稱 Name of Parts	件數 QTY	備注 Remarks	零件號碼 Parts No.	零件名稱 Name of Parts	件數 QTY	備注 Remarks
AB1026-0A	軸----- Spindle-----	1		FN1048-0A	彈性墊圈----- Washer-----	2	
AC1021-0A	壓綫彈簧----- Thread Guide Spring-----	2		J1034-0A	倒向盤----- Converse Direction Disk-----	2	
AC1023-0A	過綫盤----- Thread Eyelet Tray-----	2		J1035-0A	壓綫盤----- Thread Guide Disk-----	4	
AC1030-0A	壓綫盤墊片----- Thread Guide Disk Washer-----	2		RU408-11	配綫固定鈕----- Wiring Button-----	1	
AC1031-0A	壓綫盤墊片----- Thread Guide Disk Washer-----	3		U4-B1100	氣管----- Gas Duct-----	2	
AC1034-1A	紗拉組螺帽----- Adjusting Nut-----	2		WA030001	墊圈----- Washer-----	1	
E1021-2A	調整彈簧----- Adjust Spring-----	1		WA040017	墊圈----- Washer-----	1	
E1025-2A	壓綫盤----- Thread Guide Disk-----	2		YD025016	銷----- Pin-----	1	
FN1020-1A	沙拉組組件----- Thread Assm.-----	1		ZMB03005	螺絲----- Screw(M3-0.5x4)-----	1	
FN1021-0A	基板----- Regulator Plate-----	1		ZMB04033	螺絲----- Screw(M4-0.7x12)-----	2	
FN1022-0A	銷----- Pin-----	2		ZMB04071	螺絲----- Screw(M4-0.7x6)-----	1	
FN1025-0A	壓綫盤軸----- Thread Guide Disk Spindle-----	2		ZMC04029	螺絲----- Screw(M4-0.7x8)-----	2	
FN1026-0A	綫挂----- Thread Guide-----	1		ZMJ03005	螺絲----- Screw(M3-0.5x6)-----	4	
FN1027-0A	扭簧----- Wring Spring-----	1		ZMJ04028	螺絲----- Screw(M4-0.7x8)-----	2	
FN1028-1A	閥體----- Valve Body-----	1		ZSN11001	螺帽----- Screw Cap-----	1	
FN1028-2A	氣閥蓋----- Gas Valve Lid-----	1					
FN1028--3A	密封墊----- Airproof Mat-----	1					
FN1028-4A	閥芯(短)----- Valve Core (short)-----	1					
FN1028-5A	閥芯(長)----- Valve Core (long)-----	1					
FN1028-6A	活塞O令----- O-ring-----	2					
FN1028-7A	接頭----- Joint-----	2					
FN1033-0A	襯套----- Bushing-----	1					
FN1034-0A	銷----- Pin-----	2					
FN1035-0A	襯套----- Bushing-----	1					
FN1036-0A	彈簧----- Spring-----	1					
FN1037-0A	松綫驅動板----- Loose Thread drive-----	1					
FN1038-0A	襯套----- Bushing-----	1					
FN1039-0A	挑綫簧罩----- Raise Thread Cover-----	1					
FN1042-0A	導綫盤----- Guide Thread Disk-----	2					
FN1043-0A	導綫盤擋板----- Guide Thread Disk-----	2					
FN1044-0A	軸----- Spindle-----	1					

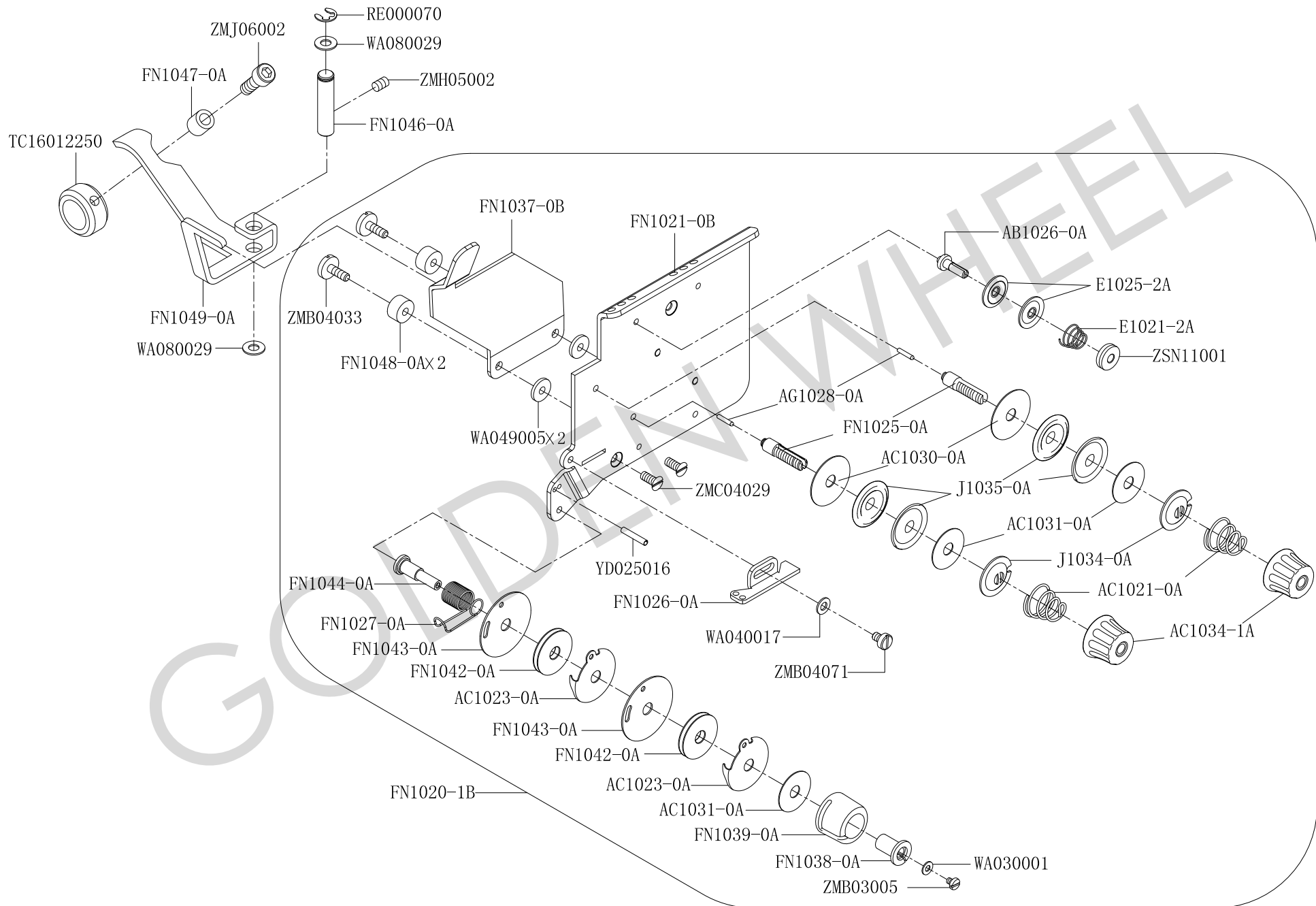
5. CSU-8672BFT/LL-1AB 缝线压力调整机构 THREAD TENSION REGULATING MECHANISM



5. CSU-8672BFT/LL-1AB 縫綫壓力調整機構 THREAD TENSION REGULATING MECHANISM

零件號碼 Parts No.	零件名稱	Name of Parts	件數 QTY	備注 Remarks	零件號碼 Parts No.	零件名稱	Name of Parts	件數 QTY	備注 Remarks
AB1026-0A	軸-----	Spindle-----	2		J1034-0A	倒向盤-----	Converse Direction Disk-----	4	
AC1021-0A	壓綫彈簧-----	Thread Guide Spring-----	4		J1035-0A	壓綫盤-----	Thread Guide Disk-----	8	
AC1023-0A	過綫盤-----	Thread Eyelet Tray-----	2		RU408-11	配綫固定鈕-----	Wiring Button-----	1	
AC1030-0A	壓綫盤墊片-----	Thread Guide Disk Washer-----	4		U4-B1100	氣管-----	Gas Duct-----	2	
AC1031-0A	壓綫盤墊片-----	Thread Guide Disk Washer-----	5		WA030001	墊圈-----	Washer-----	1	
AC1034-1A	紗拉組螺帽-----	Adjusting Nut-----	4		WA040017	墊圈-----	Washer-----	1	
E1021-2A	調整彈簧-----	Adjust Spring-----	2		YD025016	銷-----	Pin-----	1	
E1025-2A	壓綫盤-----	Thread Guide Disk-----	4		ZMB03005	螺絲-----	Screw(M3-0.5x4)-----	1	
FN1020-0A	沙拉組組件-----	Thread Assm.-----	1		ZMB04033	螺絲-----	Screw(M4-0.7x12)-----	2	
FN1021-0A	基板-----	Regulator Plate-----	1		ZMB04071	螺絲-----	Screw(M4-0.7x6)-----	1	
FN1022-0A	銷-----	Pin-----	4		ZMC04029	螺絲-----	Screw(M4-0.7x8)-----	2	
FN1025-0A	壓綫盤軸-----	Thread Guide Disk Spindle-----	4		ZMJ03005	螺絲-----	Screw(M3-0.5x6)-----	4	
FN1026-0A	綫挂-----	Thread Guide-----	1		ZMJ04028	螺絲-----	Screw(M4-0.7x8)-----	2	
FN1027-0A	扭簧-----	Wring Spring-----	1		ZSN11001	螺帽-----	Screw Cap-----	2	
FN1028-1A	閥體-----	Valve Body-----	1						
FN1028-2A	氣閥蓋-----	Gas Valve Lid-----	1						
FN1028--3A	密封墊-----	Airproof Mat-----	1						
FN1028-4A	閥芯(短)-----	Valve Core (short)-----	1						
FN1028-5A	閥芯(長)-----	Valve Core (long)-----	1						
FN1028-6A	活塞O令-----	O-ring-----	2						
FN1028-7A	接頭-----	Joint-----	2						
FN1033-0A	襯套-----	Bushing-----	1						
FN1034-0A	銷-----	Pin-----	2						
FN1035-0A	襯套-----	Bushing-----	1						
FN1036-0A	彈簧-----	Spring-----	1						
FN1037-0A	松綫驅動板-----	Loose Thread drive-----	1						
FN1038-0A	襯套-----	Bushing-----	1						
FN1039-0A	挑綫簧罩-----	Raise Thread Cover-----	1						
FN1042-0A	導綫盤-----	Guide Thread Disk-----	2						
FN1043-0A	導綫盤擋板-----	Guide Thread Disk-----	2						
FN1044-0A	軸-----	Spindle-----	1						
FN1048-0A	彈性墊圈-----	Washer-----	2						

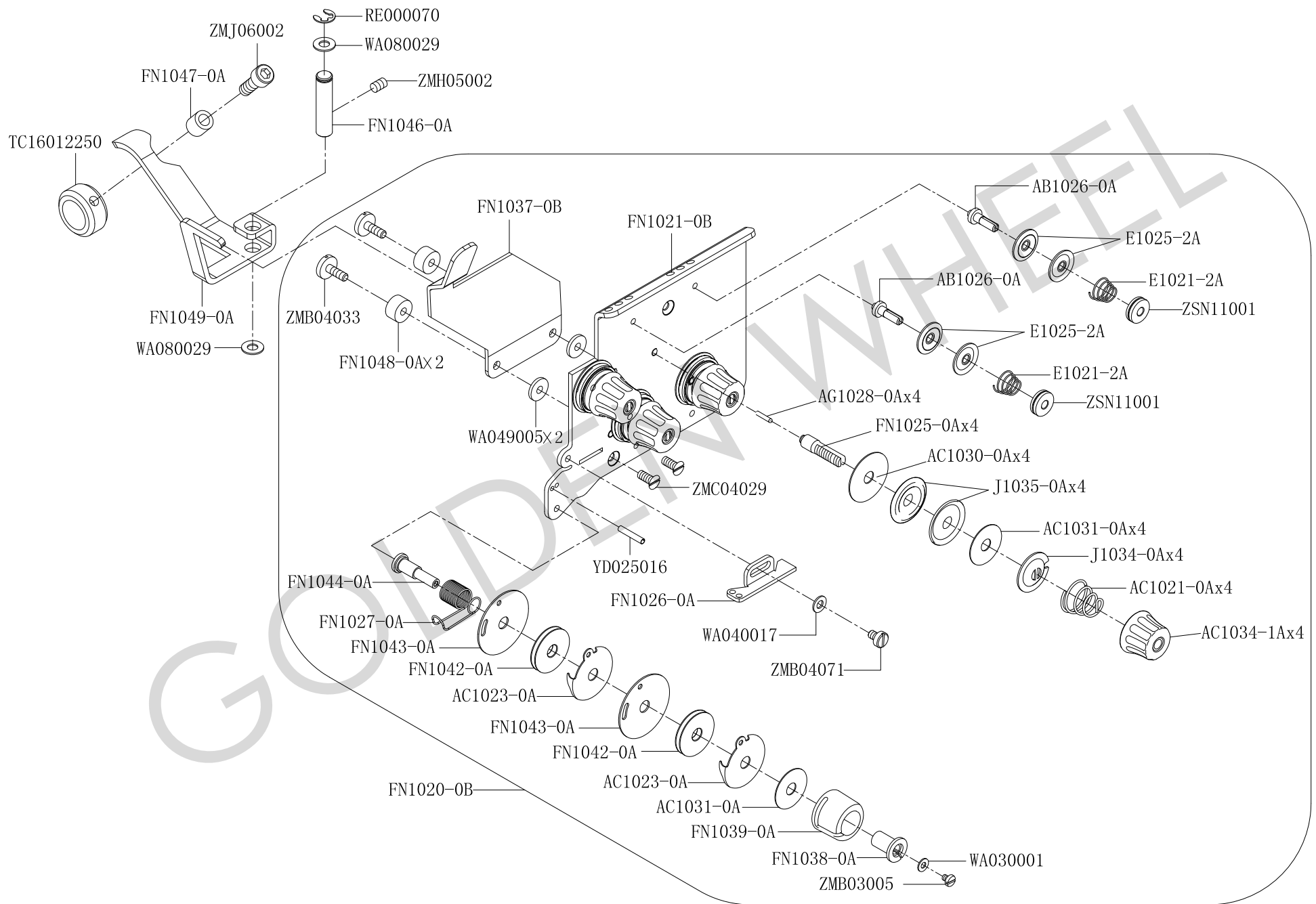
6. CSU-8671 縫綫壓力調整機構 THREAD TENSION REGULATING MECHANISM



6. CSU-8671 縫綫壓力調整機構 THREAD TENSION REGULATING MECHANISM

零件號碼 Parts No.	零件名稱 Name of Parts	件數 QTY	備注 Remarks	零件號碼 Parts No.	零件名稱 Name of Parts	件數 QTY	備注 Remarks
AB1026-0A	軸-----	1		WA030001	墊圈-----	1	
AC1021-0B	壓綫彈簧-----	2		WA040017	墊圈-----	1	
AC1023-0A	過綫盤-----	2		WA049005	墊圈-----	2	
AC1030-0A	壓綫盤墊片-----	2		WA080029	墊圈-----	2	
AC1031-0A	壓綫盤墊片-----	3		YD025016	銷-----	1	
AC1034-1A	紗拉組螺帽-----	2		ZMB03005	螺絲-----	1	
E1021-2A	調整彈簧-----	1		ZMB04033	螺絲-----	2	
E1025-2A	壓綫盤-----	2		ZMB04071	螺絲-----	1	
FN1020-1A	沙拉組組件-----	1		ZMC04029	螺絲-----	2	
FN1021-0A	基板-----	1		ZMJ06002	螺絲-----	1	
FN1022-0A	銷-----	2		ZMH05002	螺絲-----	1	
FN1025-0A	壓綫盤軸-----	2		ZSN11001	螺帽-----	1	
FN1026-0A	綫挂-----	1					
FN1027-0A	扭簧-----	1					
FN1037-0B	松綫驅動板-----	1					
FN1038-0A	襯套-----	1					
FN1039-0A	挑綫簧罩-----	1					
FN1042-0A	導綫盤-----	2					
FN1043-0A	導綫盤擋板-----	2					
FN1044-0A	軸-----	1					
FN1047-0A	滾輪-----	1					
FN1048-0A	彈性墊圈-----	2					
FN1049-0A	支柱-----	1					
J1034-0A	倒向盤-----	2					
J1035-0A	壓綫盤-----	4					
RE000070	卡環-----	1					
TC16012250	固定環-----	1					

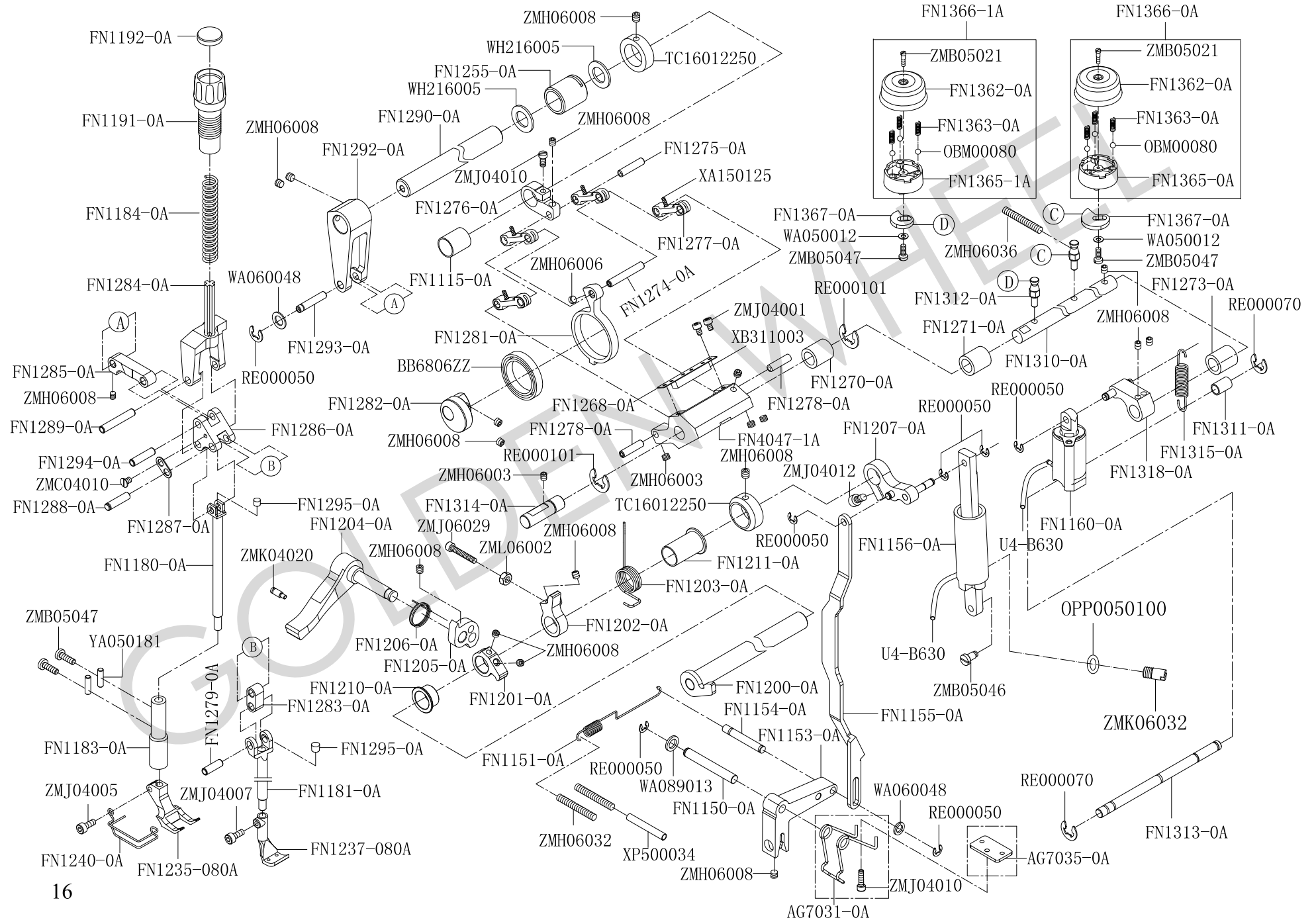
7. CSU-8672 縫綫壓力調整機構 THREAD TENSION REGULATING MECHANISM



7. CSU-8672 縫綫壓力調整機構 THREAD TENSION REGULATING MECHANISM

零件號碼 Parts No.	零件名稱 Name of Parts	件數 QTY	備注 Remarks	零件號碼 Parts No.	零件名稱 Name of Parts	件數 QTY	備注 Remarks
AB1026-0A	軸-----	2		WA030001	墊圈-----	1	
AC1021-0B	壓綫彈簧-----	4		WA040017	墊圈-----	1	
AC1023-0A	過綫盤-----	2		WA049005	墊圈-----	2	
AC1030-0A	壓綫盤墊片-----	4		WA080029	墊圈-----	2	
AC1031-0A	壓綫盤墊片-----	5		YD025016	銷-----	1	
AC1034-1A	紗拉組螺帽-----	4		ZMB03005	螺絲-----	1	
E1021-2A	調整彈簧-----	2		ZMB04033	螺絲-----	2	
E1025-2A	壓綫盤-----	4		ZMB04071	螺絲-----	1	
FN1020-0A	沙拉組組件-----	1		ZMC04029	螺絲-----	2	
FN1021-0A	基板-----	1		ZMJ06002	螺絲-----	1	
FN1022-0A	銷-----	4		ZMH05002	螺絲-----	1	
FN1025-0A	壓綫盤軸-----	4		ZSN11001	螺帽-----	1	
FN1026-0A	綫挂-----	1					
FN1027-0A	扭簧-----	1					
FN1038-0A	襯套-----	1					
FN1039-0A	挑綫簧罩-----	1					
FN1042-0A	導綫盤-----	2					
FN1043-0A	導綫盤擋板-----	2					
FN1044-0A	軸-----	1					
FN1047-0A	滾輪-----	1					
FN1048-0A	彈性墊圈-----	2					
FN1049-0A	支柱-----	1					
J1034-0A	倒向盤-----	4					
J1035-0A	壓綫盤-----	4					
RE000070	卡環-----	1					
TC16012250	固定環-----	1					

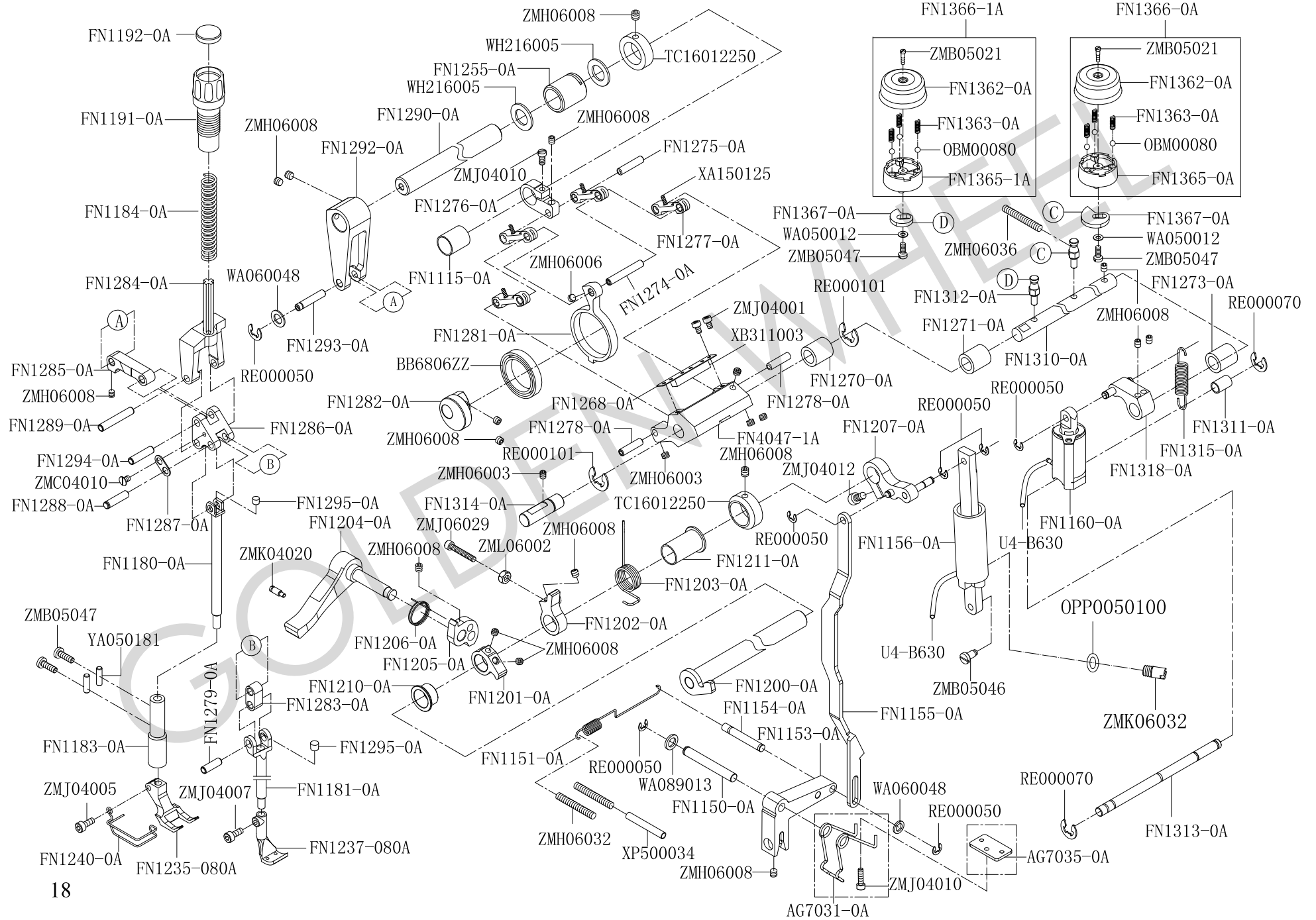
8. CSU-8671BFT/LL-1AB、CSU-8672BFT/LL-1AB 压脚机构 PRESSER LIFT MECHANISM



8. CSU-8671BFT/LL-1AB、CSU-8672BFT/LL-1AB 壓腳機構 PRESSER LIFT MECHANISM

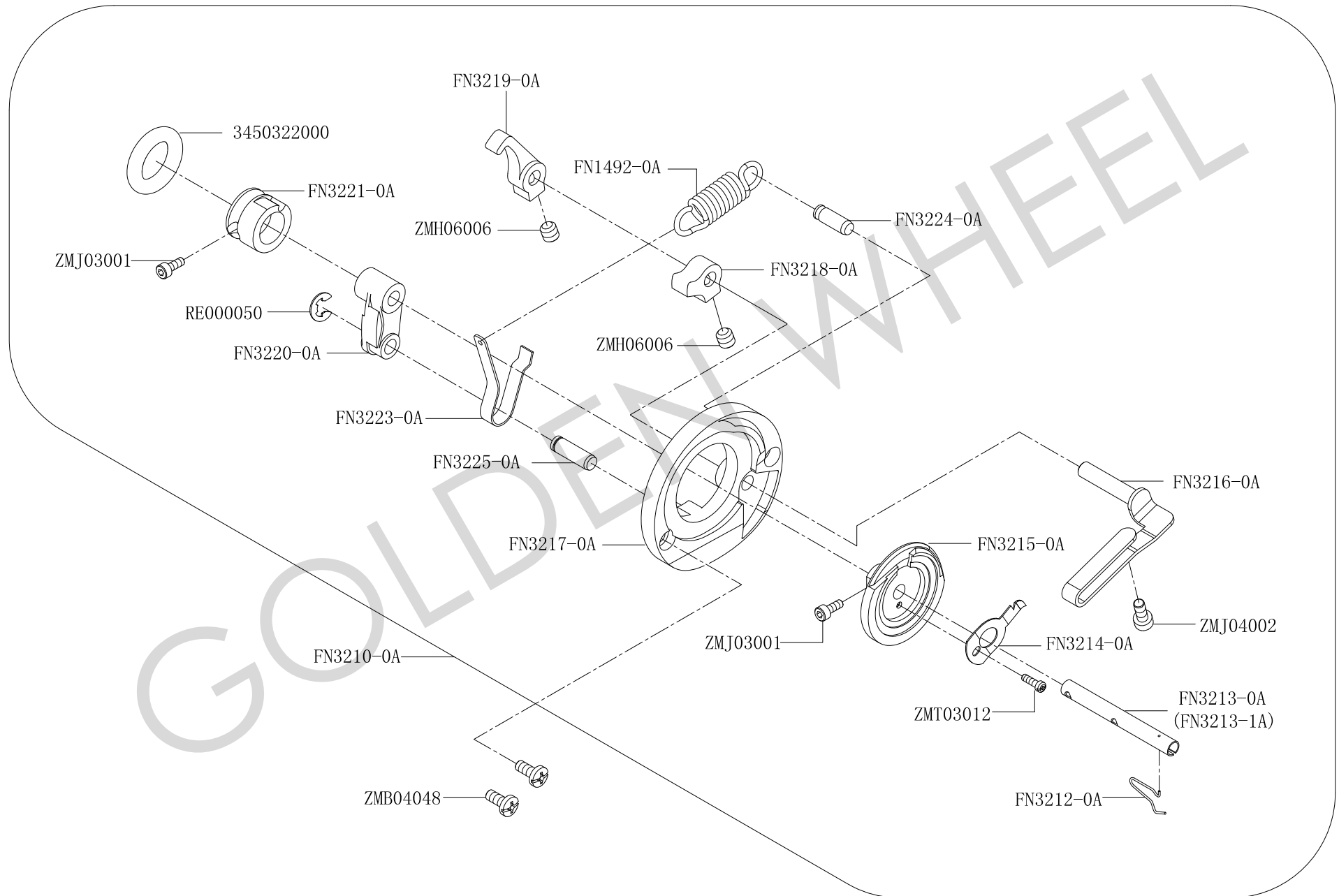
零件號碼 Parts No.	零件名稱 Name of Parts	件數 QTY	備注 Remarks	零件號碼 Parts No.	零件名稱 Name of Parts	件數 QTY	備注 Remarks
AG7031-0A	彈簧----- Spring-----	1		FN1156-4A	接頭----- Tie-in-----	2	
AG7035-0A	擋板----- Plate-----	1		FN1268-0A	油綫固定板----- Oil Wick Fix Board-----	1	
BB6806ZZ	軸承----- Bearing-----	1		FN1270-0A	套----- Bushing-----	1	
FN1115-0A	套----- Bushing-----	1		FN1271-0A	套----- Bushing-----	1	
FN1150-0A	銷----- Pin-----	1		FN1273-0A	套----- Bushing-----	1	
FN1151-0A	拉簧----- Spring-----	1		FN1274-0A	銷----- Pin-----	1	
FN1153-0A	曲柄----- Crank-----	1		FN1275-0A	銷----- Pin-----	1	
FN1154-0A	銷----- Pin-----	1		FN1276-0A	曲柄----- Crank-----	1	
FN1155-0A	拉杆----- Connecting Rod-----	1		FN1277-0A	連接杆----- Connecting Rod-----	4	
FN1156-0A	氣缸組件----- Gas Jar Assembly-----	1		FN1278-0A	銷----- Pin-----	1	
FN1160-0A	氣缸組件----- Gas Jar Assembly-----	1		FN1278-0A	銷----- Pin-----	1	
FN1180-0A	連杆----- Connecting Rod-----	1		FN1279-0A	銷----- Pin-----	2	
FN1181-0A	壓腳杆----- Presser Bar-----	5		FN1281-0A	曲柄----- Crank-----	1	
FN1183-0A	壓腳棒套管組----- Presser Bar Bushing Assembly-----	1		FN1282-0A	偏心----- Deflection Center-----	1	
FN1184-0A	彈簧----- Spring-----	1		FN1283-0A	連接器----- Connect Organ-----	1	
FN1191-0A	調節螺絲----- Adjust Screw-----	1		FN1284-0A	押棒連杆----- Presser Bar Connecting Rod-----	1	
FN1192-0A	蓋子----- Lid-----	1		FN1285-0A	連杆----- Connecting Rod-----	1	
FN1200-0A	壓腳提升軸組----- Presser Guide Shaft Assembly-----	1		FN1286-0A	舉升支臂連杆---- Ascend Connecting Rod-----	1	
FN1201-0A	壓腳提升塊----- Presser Guide Block-----	1		FN1287-0A	墊片----- Washer-----	1	
FN1202-0A	限位塊----- Restrict Block-----	1		FN1288-0A	銷----- Pin-----	1	
FN1203-0A	扭簧----- Spring-----	1		FN1289-0A	銷----- Pin-----	1	
FN1204-0A	壓腳提升杆----- Hand Lifter Lever-----	2		FN1290-0A	軸----- Spindle-----	1	
FN1205-0A	壓腳提升凸輪----- Hand Lifter Cam-----	1		FN1292-0A	上送料連杆組---- Connecting Rod Assembly-----	1	
FN1206-0A	扭簧----- Spring-----	1		FN1293-0A	銷----- Pin-----	1	
FN1207-0A	壓腳提升曲柄組----- Presser Guide Crank Assembly-----	1		FN1294-0A	銷----- Pin-----	1	
FN1210-0A	套----- Bushing-----	1		FN1295-0A	橡膠塞----- Rubber Stopper-----	2	
FN1211-0A	套----- Bushing-----	1		FN1310-0A	軸----- Spindle-----	1	
FN1235-080A	外壓腳----- Outer Presser Foot-----	1		FN1311-0A	套----- Bushing-----	1	
FN1237-080A	內壓腳----- Inner Presser Foot-----	1		FN1312-0A	變換銷----- Commutation Pin-----	2	
FN1240-0A	護手環----- Armguard Ring-----	1		FN1313-0A	軸----- Spindle-----	1	
FN1255-0A	套----- Bushing-----	1		FN1314-0A	連接銷----- Connect Pin-----	1	

8. CSU-8671BFT/LL-1AB、CSU-8672BFT/LL-1AB 压脚机构 PRESSER LIFT MECHANISM



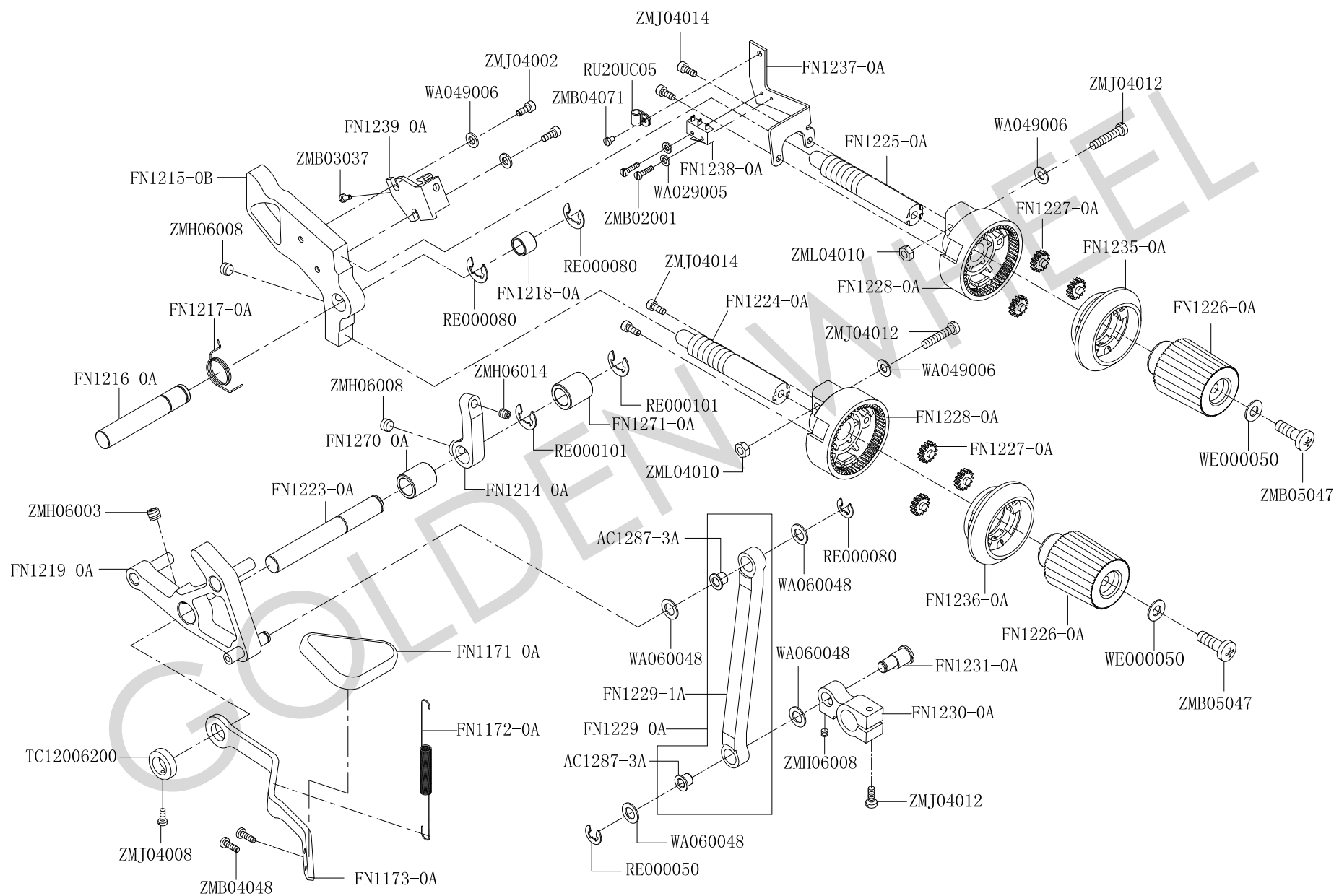
8. CSU-8671BFT/LL-1AB、CSU-8672BFT/LL-1AB 壓腳機構 PRESSER LIFT MECHANISM

零件號碼 Parts No.	零件名稱 Name of Parts	件數 QTY	備注 Remarks	零件號碼 Parts No.	零件名稱 Name of Parts	件數 QTY	備注 Remarks
FN1318-0A	氣壓缸連接板組	1		ZMH06006	螺絲	1	
FN1362-0A	旋轉扳手	2		ZMH06008	螺絲	15	
FN1363-0A	彈簧	6		ZMH06032	螺絲	2	
FN1365-0A	凸輪座(1)	1		ZMH06036	螺絲	1	
FN1365-1A	凸輪座(2)	1		ZMJ04001	螺絲	2	
FN1366-0A	刻度盤組件(1)	1		ZMJ04002	螺絲	4	
FN1366-1A	刻度盤組件(2)	1		ZMJ04005	螺絲	1	
FN1367-0A	驅動凸輪	2		ZMJ04007	螺絲	1	
FN4047-1A	倒退固定軸	1		ZMJ04010	螺絲	2	
OBM00080	鋼珠	6		ZMJ04012	螺絲	1	
OPP0050100	O型圈	1		ZMJ06029	螺絲	1	
RE000050	扣環	7		ZMK06032	螺絲	1	
RE000070	扣環	2		ZML06002	螺帽	1	
RE000101	扣環	2					
TC16012250	固定環	2					
U4-B630	氣管	2					
WA050012	墊圈	2					
WA060048	墊圈	2					
WA089013	墊圈	1					
WH216005	墊圈	2					
XA150125	油綫	1					
XB311003	油棉	1					
XP500034	油管	1					
YA050181	銷	2					
ZMB05021	螺絲	2					
ZMB05046	螺絲	1					
ZMB05047	螺絲	4					
ZMC04010	螺絲	1					
ZMH06003	螺絲	6					
FN1315-0A	彈簧	1					



9. CSU-8671BFT/LL-1AB、CSU-8672BFT/LL-1AB 繞綫器部件 BOBBIN COVERS

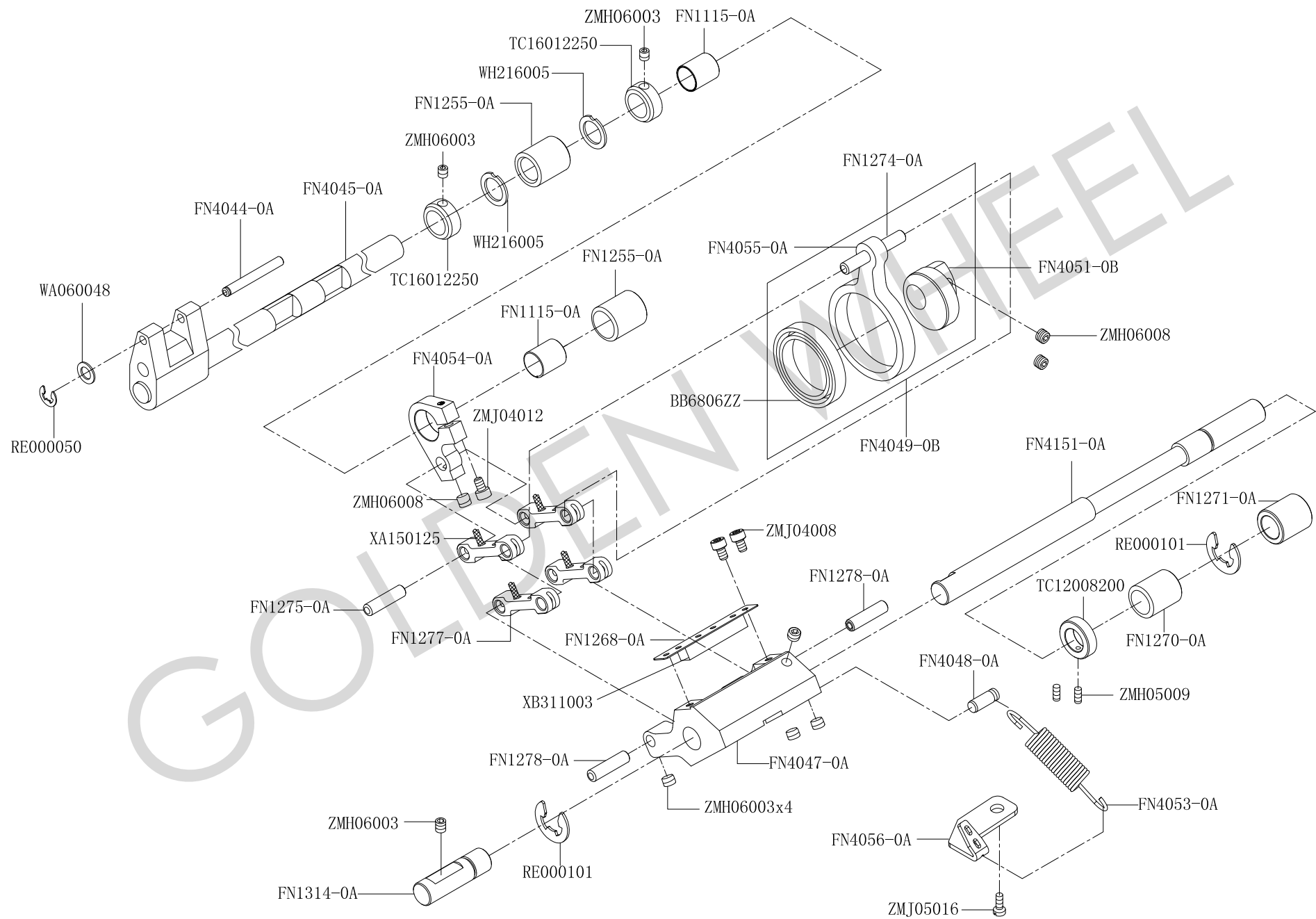
零件號碼 Parts No.	零件名稱 Name of Parts	件數 QTY	備注 Remarks	零件號碼 Parts No.	零件名稱 Name of Parts	件數 QTY	備注 Remarks
3450322000	摩擦輪----- Friction Wheel-----	1					
FN1492-0A	拉簧----- Spring-----	1					
FN3210-0A	繞綫器組----- Winder Driving Asm.-----	1					
FN3212-0A	張力簧----- Spring-----	1					
FN3213-0A	繞綫器軸----- Winder Driving Spindle-----	1					
FN3214-0A	卷綫器割綫刀----- Bobbin Winder secant Sword-----	1					
FN3215-0A	繞綫器托架----- Winder Driving Support-----	1					
FN3216-0A	觸動閥----- Feel Valve-----	1					
FN3217-0A	卷綫器座----- Bobbin Winder Seat-----	1					
FN3218-0A	頂塊----- Dollop-----	1					
FN3219-0A	定位鈎----- Hook-----	1					
FN3220-0A	繞綫器支架----- Winder Driving Support-----	1					
FN3221-0A	繞綫器從動輪----- Winder Driving Wheel-----	1					
FN3223-0A	卷綫器換位驅動----- Bobbin Winder Drive-----	1					
FN3224-0A	銷----- Pin-----	1					
FN3225-0A	銷----- Pin-----	1					
RE000050	扣環----- Retaining Ring-----	1					
ZMB04048	螺絲----- Screw(M4-0.7x9.5)-----	2					
ZMH06006	螺絲----- Screw(M6-1.0x6)-----	2					
ZMJ03001	螺絲----- Screw(M3-0.5x10)-----	2					
ZMJ04002	螺絲----- Screw(M4-0.7x10)-----	1					
ZMT03012	木螺絲----- Wood Screw-----	1					



10. CSU-8671BFT/LL-1AB、CSU-8672BFT/LL-1AB 針距調節機構 STITCH LENGTH REGULATING MECHANISM

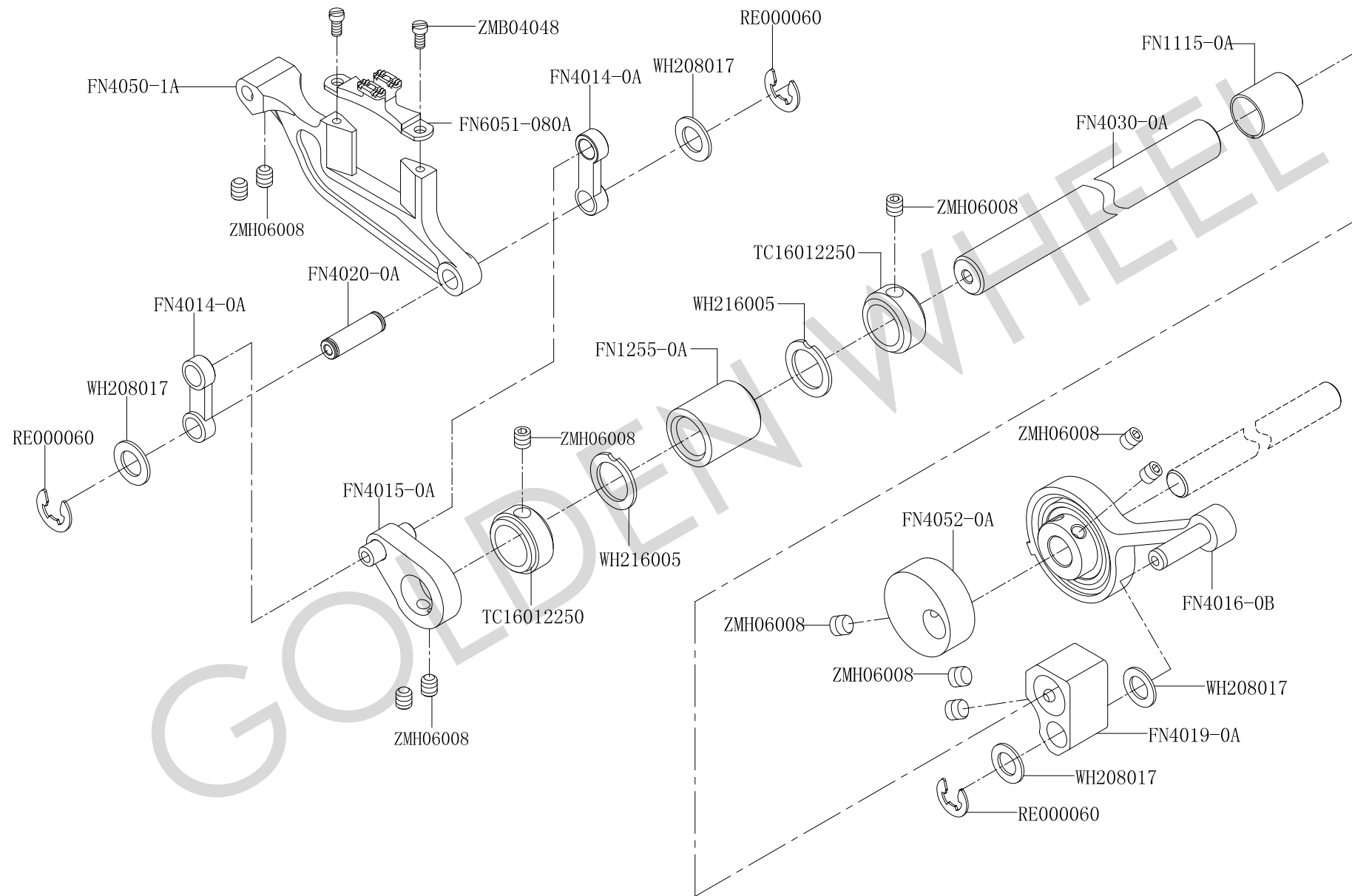
零件號碼 Parts No.	零件名稱 Name of Parts	件數 QTY	備注 Remarks	零件號碼 Parts No.	零件名稱 Name of Parts	件數 QTY	備注 Remarks
AC1287-3A	襯套----- Bushing-----	2		RU20UC05	配綫固定鈕----- Wiring Button-----	1	
FN1171-0A	倒縫把手----- Reverse Stitching Handle-----	1		TC12006200	固定環----- Regulator Ring-----	1	
FN1172-0A	拉簧----- Tension Spring-----	1		WA029005	墊圈----- Washer-----	2	
FN1173-0A	倒縫杆----- Reverse Stitching Pole-----	1		WA049006	墊圈----- Washer-----	4	
FN1214-0A	倒縫限位曲柄----- Reverse Stitching Crank-----	1		WA060048	墊圈----- Washer-----	4	
FN1215-0B	三叉----- Feed Regulator-----	1		WE000050	墊圈----- Washer-----	2	
FN1216-0A	軸----- Spindle-----	1		ZMB02001	螺絲----- Screw(M2-0.4x9.5)-----	2	
FN1217-0A	扭簧----- Spring-----	1		ZMB03037	螺絲----- Screw(M3-0.5x10)-----	1	
FN1218-0A	套----- Bushing-----	1		ZMB04048	螺絲----- Screw(M4-0.7x9.5)-----	2	
FN1219-0A	差動腕組件----- Regulating Arm Assembly-----	1		ZMB04071	螺絲----- Screw(M4-0.7x6)-----	1	
FN1223-0A	軸----- Spindle-----	1		ZMB05047	螺絲----- Screw(M5-0.8x16)-----	2	
FN1224-0A	送料調節螺絲----- Feed Driving Adjust Screw-----	1		ZMH06003	螺絲----- Screw(M6-1.0x8)-----	1	
FN1225-0A	送料調節螺絲----- Feed Driving Adjust Screw-----	1		ZMH06008	螺絲----- Screw(M6-1.0x6)-----	3	
FN1226-0A	旋鈕----- Knob-----	2		ZMH06014	螺絲----- Screw(M6-1.0x16)-----	1	
FN1227-0A	小齒輪----- Little Gear-----	6		ZMJ04002	螺絲----- Screw(M4-0.7x10)-----	2	
FN1228-0A	內齒輪----- Inside Gear-----	2		ZMJ04008	螺絲----- Screw(M4-0.7x6)-----	1	
FN1229-0A	連杆組----- Connecting Rod Assembly-----	1		ZMJ04012	螺絲----- Screw(M4-0.7x12)-----	3	
FN1229-1A	連杆----- Connecting Rod-----	1		ZMJ04014	螺絲----- Screw(M4-0.7x14)-----	4	
FN1230-0A	曲柄----- Crank-----	1		ZML04010	螺帽----- Screw Cap-----	2	
FN1231-0A	偏心銷----- Eccentric Pin-----	1					
FN1235-0A	行星架(上)----- Planet Support (Upper)-----	1					
FN1236-0A	行星架(下)----- Planet Support (Lower)-----	1					
FN1237-0A	支架----- Bracket-----	1					
FN1238-0A	行程開關----- Journey Switch-----	1					
FN1239-0A	觸動開關----- Touch Switch-----	1					
FN1270-0A	套----- Bushing-----	1					
FN1271-0A	套----- Bushing-----	1					
RE000050	扣環----- Retaining Ring-----	1					
RE000080	扣環----- Retaining Ring-----	3					
RE000101	扣環----- Retaining Ring-----	2					

11. CSU-8671BFT/LL-1AB、CSU-8672BFT/LL-1AB 水平送料机构 PLANE FEED MECHANISM



11. CSU-8671BFT/LL-1AB、CSU-8672BFT/LL-1AB 水平送料機構 PLANE FEED MECHANISM

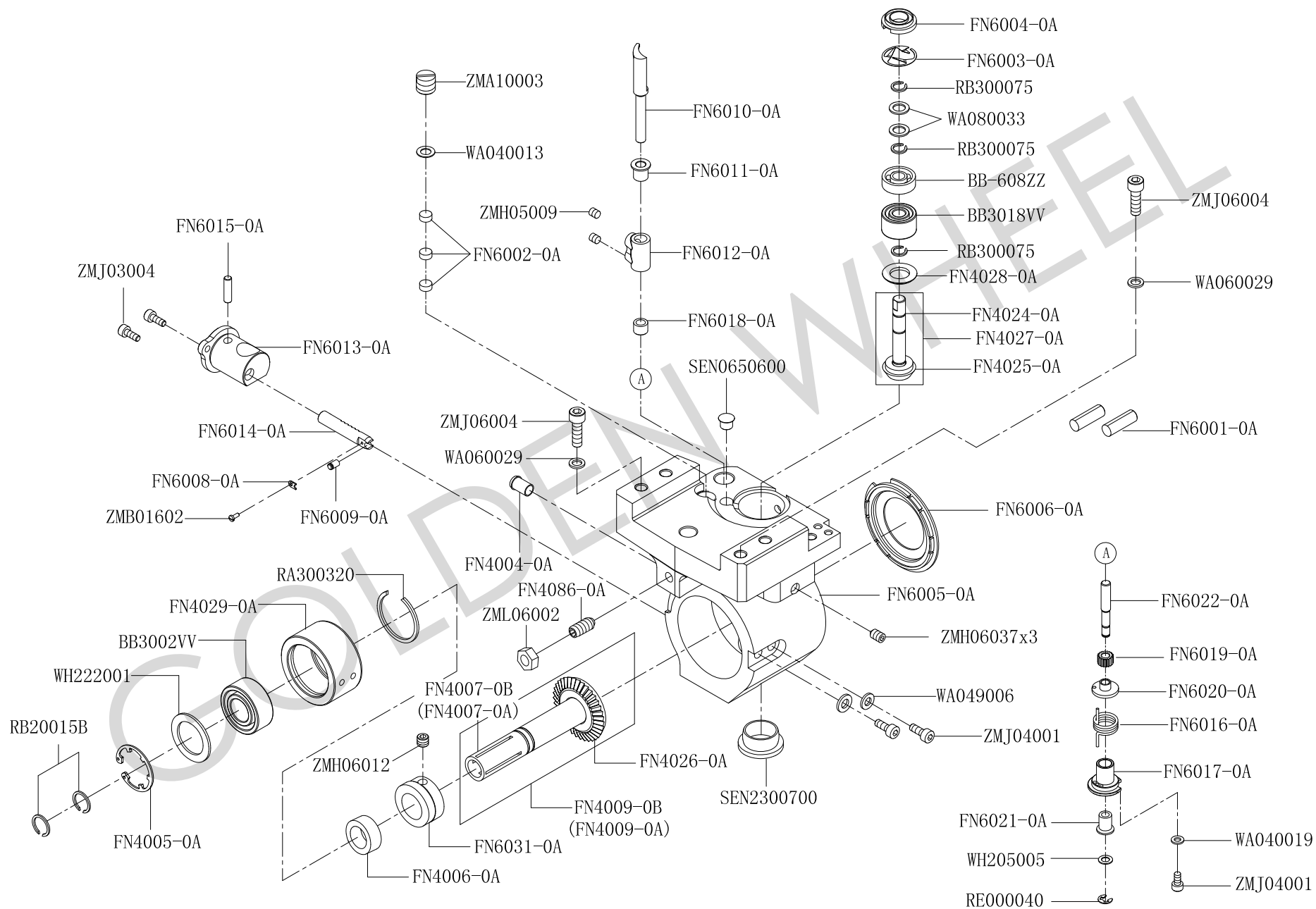
零件號碼 Parts No.	零件名稱 Name of Parts	件數 QTY	備注 Remarks	零件號碼 Parts No.	零件名稱 Name of Parts	件數 QTY	備注 Remarks
BB6806ZZ	軸承----- Bearing-----	1		ZMH05009	螺絲----- Screw(M5-0.8x5)-----	2	
FN1115-0A	套----- Bushing-----	2		ZMH06003	螺絲----- Screw(M6-1.0x8)-----	8	
FN1255-0A	套----- Bushing-----	2		ZMH06008	螺絲----- Screw(M6-1.0x6)-----	3	
FN1268-0A	油綫固定板----- Oil Wick Fix Board-----	1		ZMJ04008	螺絲----- Screw(M4-0.7x6)-----	2	
FN1270-0A	套----- Bushing-----	1		ZMJ04012	螺絲----- Screw(M4-0.7x16)-----	1	
FN1271-0A	套----- Bushing-----	1		ZMJ05016	螺絲----- Screw(M5-0.8x12)-----	1	
FN1274-0A	銷----- Pin-----	1					
FN1275-0A	銷----- Pin-----	1					
FN1277-0A	連接塊----- Connect Dollop-----	4					
FN1278-0A	銷----- Pin-----	2					
FN1314-0A	連接銷----- Connect Pin-----	1					
FN4044-0A	銷----- Pin-----	1					
FN4045-0A	下送料軸組----- Lower Feed Driving Assembly-----	1					
FN4047-0A	倒退固定軸----- Reverse Block-----	1					
FN4048-0A	銷----- Pin-----	1					
FN4049-0B	下送料偏心組----- LowerFeed Driving Deflection Center-----	1					
FN4051-0B	送料偏心----- Deflection Center-----	1					
FN4053-0A	拉簧----- Spring-----	1					
FN4054-0A	連接杆----- Connecting Rod-----	1					
FN4055-0A	曲柄----- Crank-----	1					
FN4056-0A	拉簧固定板----- Spring Fix Board-----	1					
FN4151-0A	軸----- Spindle-----	1					
RE000050	扣環----- Retaining Ring-----	1					
RE000101	扣環----- Retaining Ring-----	2					
TC12008200	固定環----- Regulator Ring-----	1					
TC16012250	固定環----- Regulator Ring-----	2					
WA060048	墊圈----- Washer-----	1					
WH216005	墊圈----- Washer-----	2					
XA150125	油綫----- Oil Wick-----	1					
XB311003	油棉----- Oil Cotton-----	1					



12. CSU-8671BFT/LL-1AB、CSU-8672BFT/LL-1AB 上下送料機構 UPPER & LOWER FEED MECHANISM

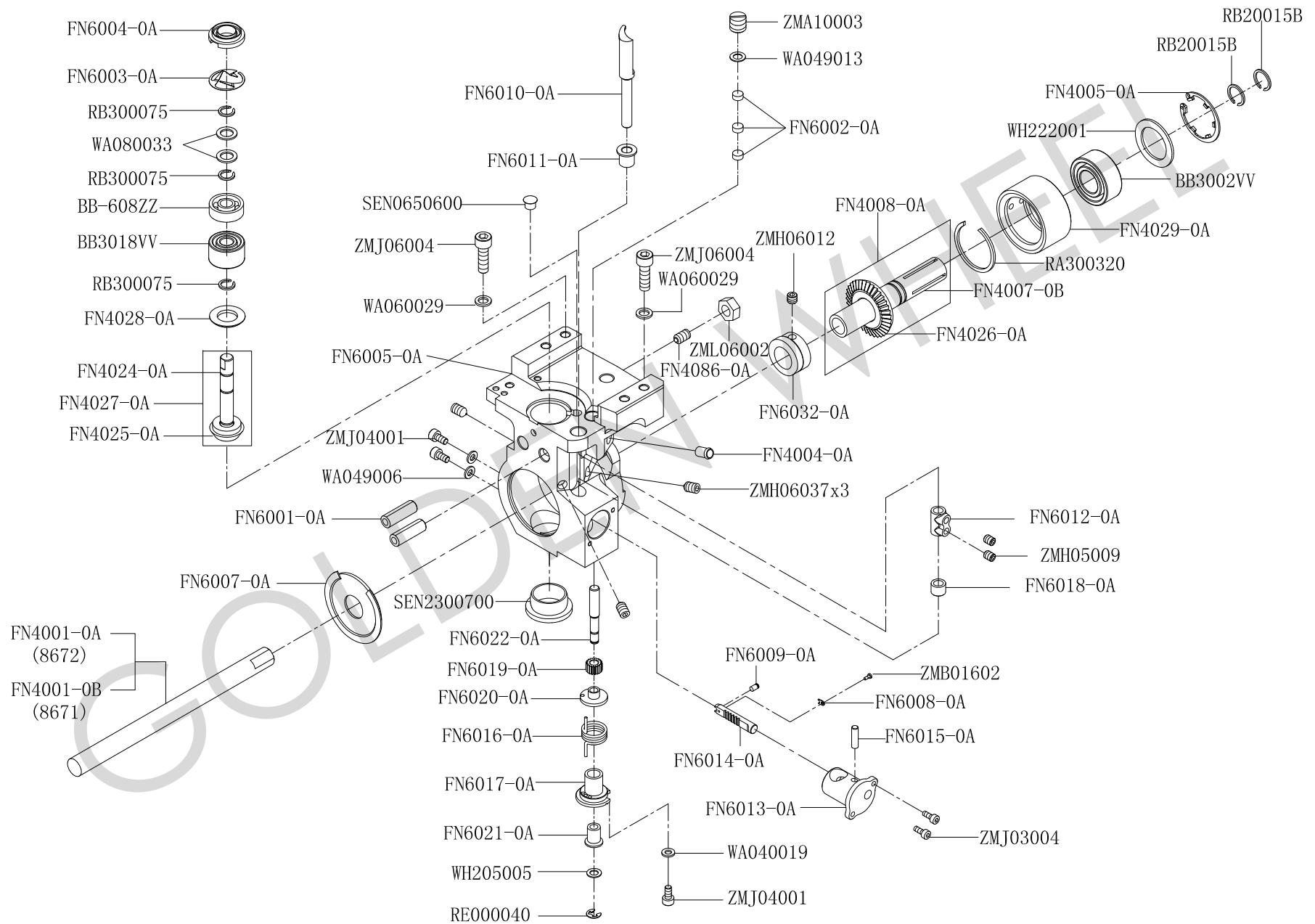
零件號碼 Parts No.	零件名稱 Name of Parts	件數 QTY	備注 Remarks	零件號碼 Parts No.	零件名稱 Name of Parts	件數 QTY	備注 Remarks
FN1115-0A	套----- Bushing-----	1					
FN1255-0A	套----- Bushing-----	1					
FN4014-0A	送料臺連杆----- Feed Platform Connecting Rod-----	2					
FN4015-0A	搖動曲柄組----- Agitate Crank Assembly-----	1					
FN4016-0B	上下送料偏心組--- Upper Lower Feed Deflection Center---	1					
FN4019-0A	曲柄----- Crank-----	1					
FN4020-0A	銷----- Pin-----	2					
FN4030-0A	軸----- Spindle-----	1					
FN4050-1A	送料臺----- Feed Platform-----	1					
FN4052-0A	打油偏心輪----- Deflection Center Wheel-----	1					
FN6051-080A	送料齒----- Feed Gear-----	1					
RE000060	扣環----- Retaining Ring-----	3					
TC16012250	固定環----- Regulator Ring-----	2					
WH208017	墊圈----- Washer-----	4					
WH216005	墊圈----- Washer-----	2					
ZMB04048	螺絲----- Screw(M4-0.7x9.5)-----	2					
ZMH06008	螺絲----- Screw(M6-1.0x6)-----	11					

13. CSU-8672BFT/LL-1AB 釜轴台机构(左) HOOK POST MECHANISM (LEFT)



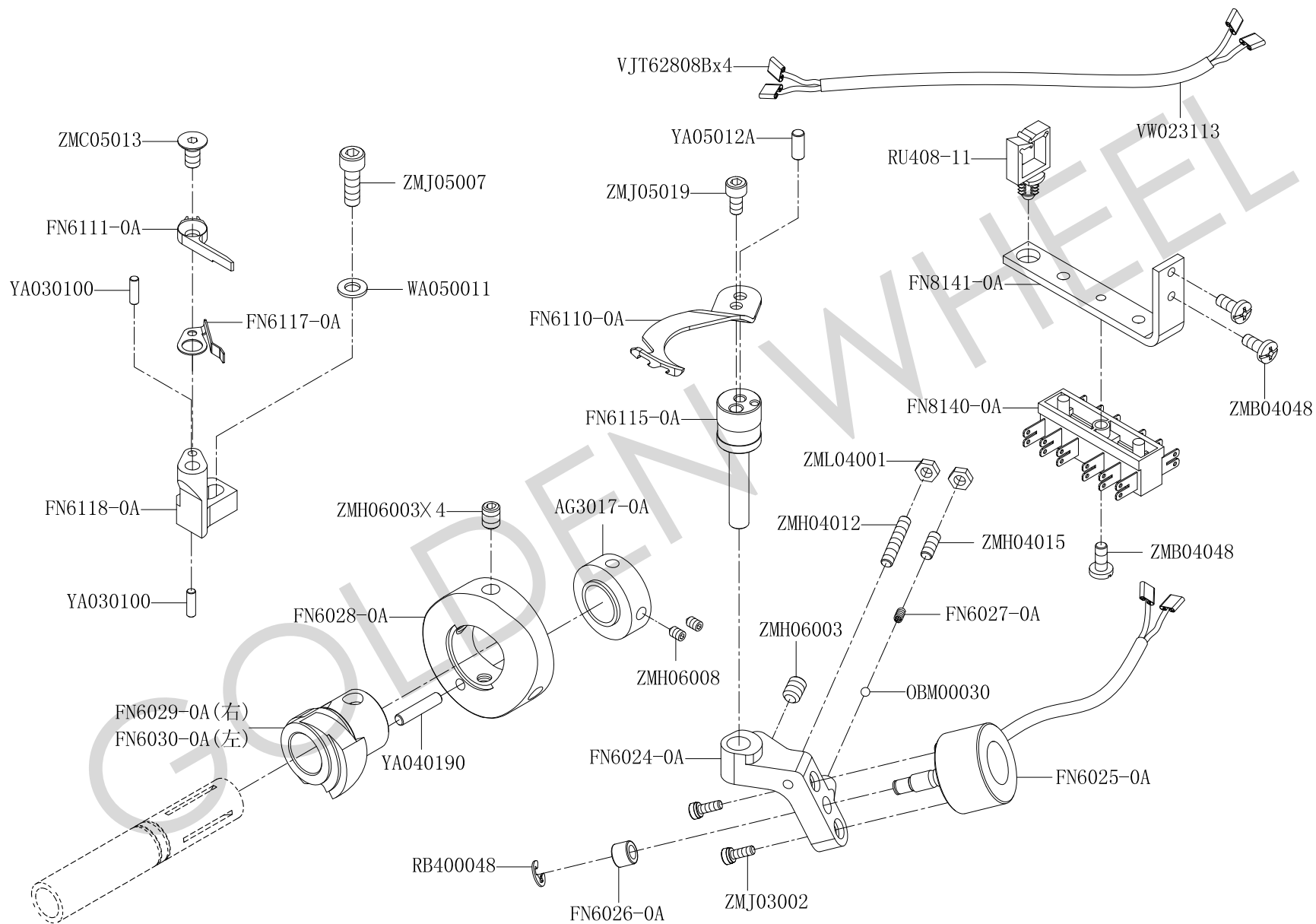
13. CSU-8672BFT/LL-1AB 釜軸臺機構 (左) HOOK POST MECHANISM (LEFT)

零件號碼 Parts No.	零件名稱 Name of Parts	件數 QTY	備注 Remarks	零件號碼 Parts No.	零件名稱 Name of Parts	件數 QTY	備注 Remarks
BB3002VV	軸承----- Bearing-----	1		FN6016-0A	扭簧----- Spring-----	1	
BB3018VV	軸承----- Bearing-----	1		FN6017-0A	襯套----- Bushing-----	1	
BB-608ZZ	軸承----- Bearing-----	1		FN6018-0A	襯套----- Bushing-----	1	
FN4004-0A	套----- Bushing-----	1		FN6019-0A	齒輪----- Gear-----	1	
FN4005-0A	扣環----- Retaining Ring-----	1		FN6020-0A	襯套----- Bushing-----	1	
FN4006-0A	止位環----- Stop Ring-----	1		FN6021-0A	襯套----- Bushing-----	1	
FN4007-0A	軸----- Spindle-----	1		FN6022-0A	軸----- Spindle-----	1	
FN4007-0B	軸----- Spindle-----	1		FN6031-0A	凸輪(左)----- Cam (left)-----	1	
FN4009-0A	齒輪(大)組件----- Gear (big) Assembly-----	1		RA300320	扣環----- Retaining Ring-----	1	
FN4009-0B	齒輪(大)組件----- Gear (big) Assembly-----	1		RB20015B	扣環----- Retaining Ring-----	2	
FN4024-0A	軸----- Spindle-----	1		RB300075	扣環----- Retaining Ring-----	3	
FN4025-0A	螺旋傘齒輪(小)---- Gear (little)-----	1		RE000040	扣環----- Retaining Ring-----	1	
FN4026-0A	螺旋傘齒輪(大)---- Gear (big)-----	1		SEN0650600	塞子----- Rubber Stopper-----	1	
FN4027-0A	齒輪(小)組件----- Gear (little) Assembly-----	1		SEN2300700	塞子----- Rubber Stopper-----	1	
FN4028-0A	墊圈----- Washer-----	1		WA049006	墊圈----- Washer-----	1	
FN4029-0A	送料臺軸----- Feed Platform Spindle-----	1		WA040013	墊圈----- Washer-----	1	
FN4086-0A	螺絲----- Screw-----	1		WA060029	墊圈----- Washer-----	2	
FN6001-0A	銷----- Pin-----	2		WA080033	墊圈----- Washer-----	2	
FN6002-0A	塞子----- Rubber Stopper-----	3		WH040019	墊圈----- Washer-----	1	
FN6003-0A	墊片----- Cushion-----	1		WH205050	墊圈----- Washer-----	1	
FN6004-0A	密封環----- Airproof Ring-----	1		WH222001	墊圈----- Washer-----	1	
FN6005-0A	釜軸臺----- Hook Post-----	1		ZMA10003	螺絲----- Screw(M10-1.0x9)-----	1	
FN6006-0A	封蓋(左)----- Lid(left)-----	1		ZMB01602	螺絲----- Screw(M1.6-0.35x4)-----	1	
FN6008-0A	擋片----- Block-----	1		ZMH05009	螺絲----- Screw(M5-0.8x5)-----	2	
FN6009-0A	滾子----- Roller-----	1		ZMH06012	螺絲----- Screw(M6-1.0x5)-----	1	
FN6010-0A	牛角----- Cattle Horn-----	1		ZMH06037	螺絲----- Screw(M6-1.0x10)-----	3	
FN6011-0A	襯套----- Bushing-----	1		ZMJ03004	螺絲----- Screw(M3-0.5x8)-----	2	
FN6012-0A	接頭----- Joint-----	1		ZMJ04001	螺絲----- Screw(M4-0.7x8)-----	3	
FN6013-0A	排齒座體----- Rack Seat-----	1		ZMJ06004	螺絲----- Screw(M6-1.0x20)-----	2	
FN6014-0A	齒條----- Rack-----	1		ZML06002	螺帽----- Screw Cap-----	1	
FN6015-0A	銷----- Pin-----	1					



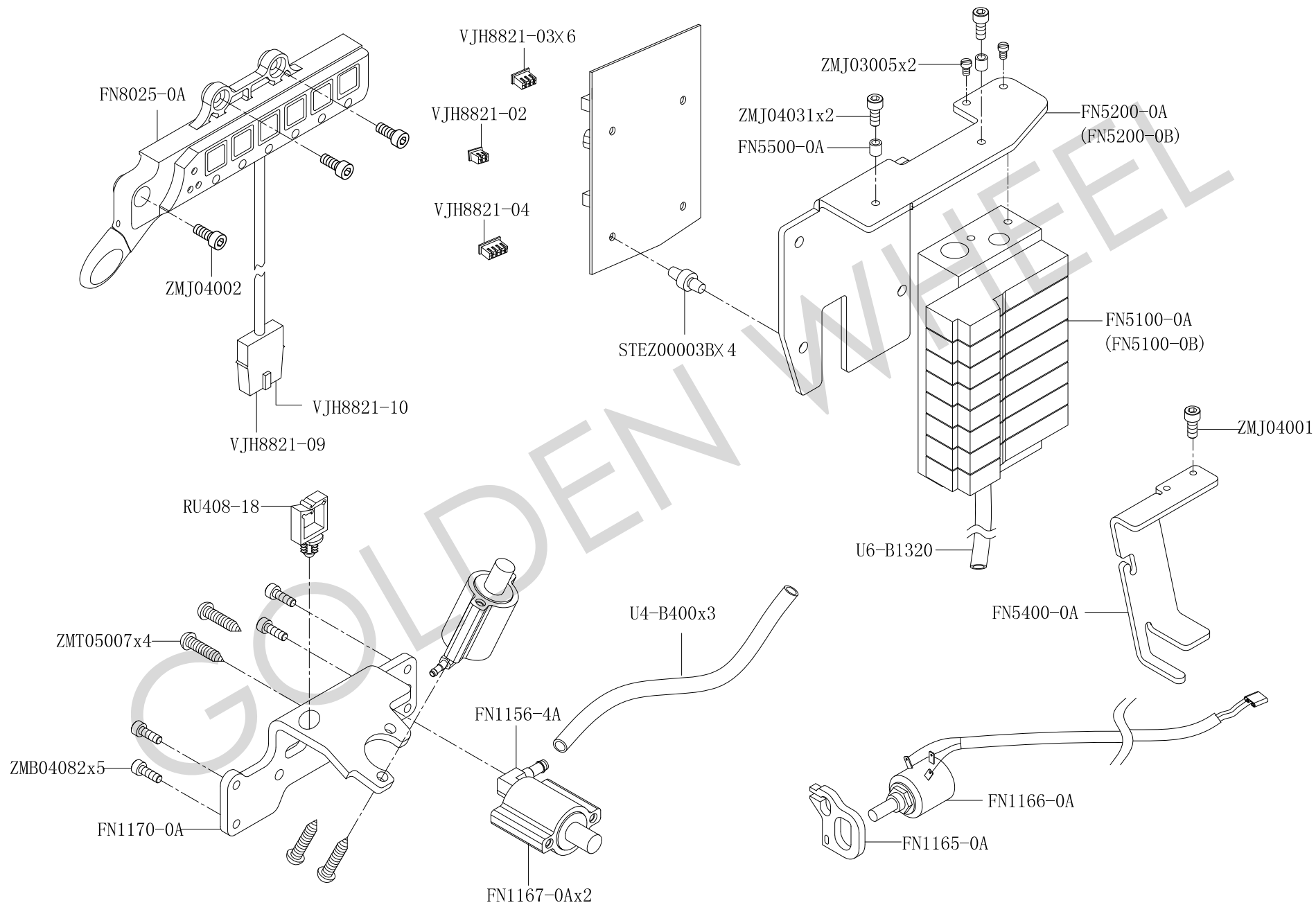
14 CSU-8671BFT/LL-1AB、CSU-8672BFT/LL-1AB 釜軸臺機構（右） HOOK POST MECHANISM（RIGHT）

零件號碼 Parts No.	零件名稱 Name of Parts	件數 QTY	備注 Remarks	零件號碼 Parts No.	零件名稱 Name of Parts	件數 QTY	備注 Remarks
BB3002VV	軸承----- Bearing-----	1		FN6016-0A	彈簧----- Spring-----	1	
BB3018VV	軸承----- Bearing-----	1		FN6017-0A	襯套----- Bushing-----	1	
BB-608ZZ	軸承----- Bearing-----	1		FN6018-0A	襯套----- Bushing-----	1	
FN4001-0A	軸(雙針)----- Spindle-----	1		FN6019-0A	齒輪----- Gear-----	1	
FN4001-0B	軸(單針)----- Spindle-----	1		FN6020-0A	襯套----- Bushing-----	1	
FN4004-0A	套----- Bushing-----	1		FN6021-0A	襯套----- Bushing-----	1	
FN4005-0A	扣環----- Retaining Ring-----	1		FN6022-0A	軸----- Bushing-----	1	
FN4007-0B	軸----- Spindle-----	1		FN6032-0A	凸輪(右)----- Cam (right)-----	1	
FN4008-0A	齒輪(大)組件----- Gear (big) Assembly-----	1		RA300320	扣環----- Retaining Ring-----	1	
FN4024-0A	軸----- Spindle-----	1		RB20015B	扣環----- Retaining Ring-----	2	
FN4025-0A	螺旋傘齒輪(小)----- Gear (little)-----	1		RB300075	扣環----- Retaining Ring-----	3	
FN4026-0A	齒輪(大)----- Gear (big)-----	1		RE000040	扣環----- Retaining Ring-----	1	
FN4027-0A	齒輪(小)組件----- Gear (little) Assembly-----	1		SEN0650600	塞子----- Rubber Stopper-----	1	
FN4028-0A	墊圈----- Washer-----	1		SEN2300700	塞子----- Rubber Stopper-----	1	
FN4029-0A	送料臺軸----- Feed Platform Spindle-----	1		WA040019	墊圈----- Washer-----	1	
FN4086-0A	螺絲----- Screw-----	1		WA049006	墊圈----- Washer-----	2	
FN6001-0A	銷----- Pin-----	2		WA049013	墊圈----- Washer-----	1	
FN6002-0A	塞子----- Rubber Stopper-----	3		WA060029	墊圈----- Washer-----	2	
FN6003-0A	墊片----- Cushion-----	1		WA080033	墊圈----- Washer-----	2	
FN6004-0A	密封環----- Airproof Ring-----	1		WH205005	墊圈----- Washer-----	1	
FN6005-0A	釜軸臺----- Hook Post-----	1		WH222001	墊圈----- Washer-----	1	
FN6007-0A	封蓋(右)----- Lid(right)-----	1		ZMA10003	螺絲----- Screw(M10-1.0x9)-----	1	
FN6008-0A	擋片----- Block-----	1		ZMB01602	螺絲----- Screw(M1.6-0.35x4)-----	1	
FN6009-0A	滾子----- Roller-----	1		ZMH05009	螺絲----- Screw(M5-0.8x5)-----	2	
FN6010-0A	牛角----- Cattle Horn-----	1		ZMH06012	螺絲----- Screw(M6-1.0x5)-----	1	
FN6011-0A	套----- Bushing-----	1		ZMH06037	螺絲----- Screw(M6-1.0x10)-----	3	
FN6012-0A	接頭----- Joint-----	1		ZMJ03004	螺絲----- Screw(M3-0.5x8)-----	2	
FN6013-0A	排齒座體----- Rack Seat-----	1		ZMJ04001	螺絲----- Screw(M4-0.7x8)-----	3	
FN6014-0A	齒條----- Rack-----	1		ZMJ06004	螺絲----- Screw(M6-1.0x20)-----	2	
FN6015-0A	銷----- Pin-----	1		ZML06002	螺帽----- Screw Cap-----	1	



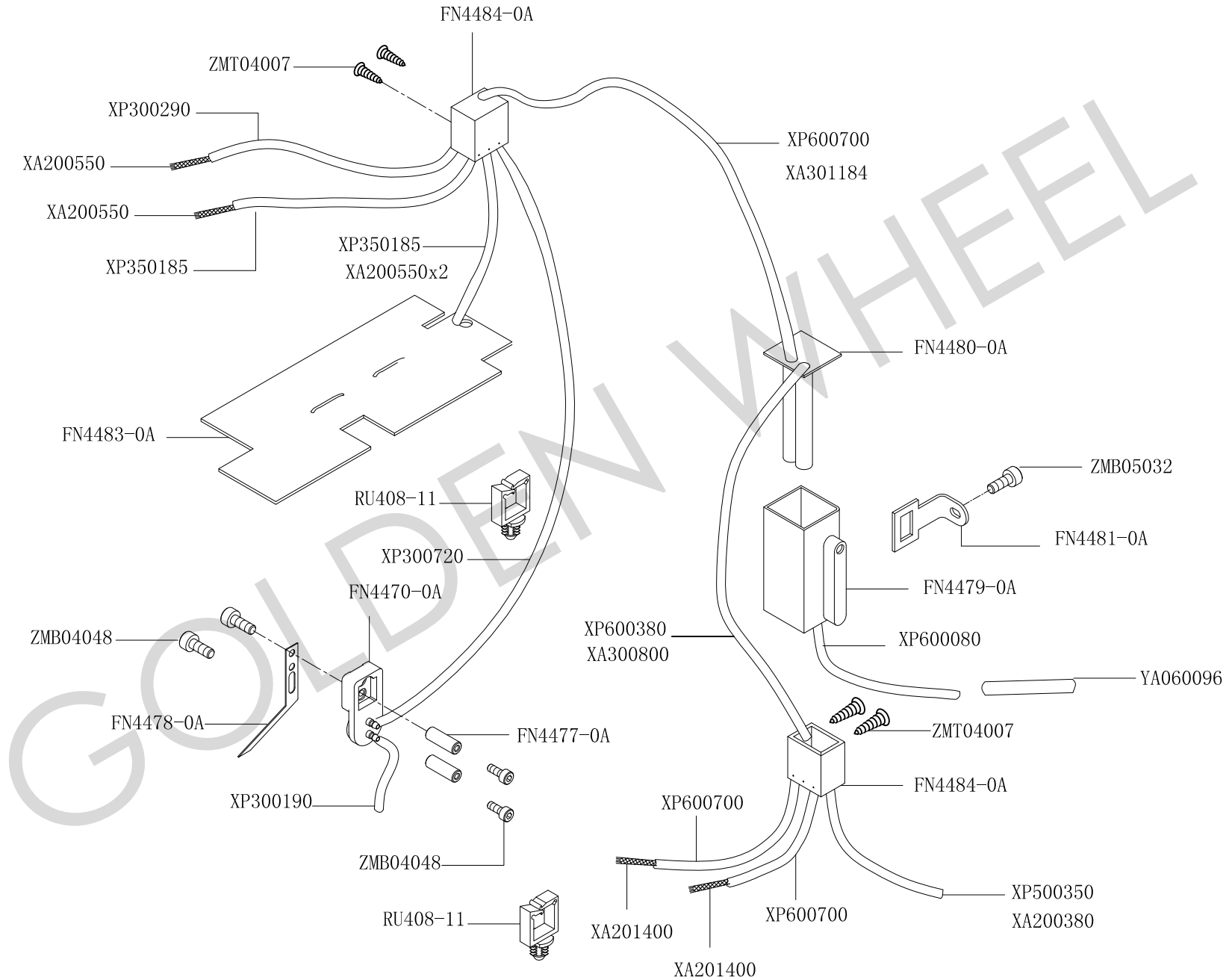
15. CSU-8671BFT/LL-1AB、CSU-8672BFT/LL-1AB 切綫機構 THREAD TRIMMING MECHANISM

零件號碼 Parts No.	零件名稱 Name of Parts	件數 QTY	備注 Remarks	零件號碼 Parts No.	零件名稱 Name of Parts	件數 QTY	備注 Remarks
AG3017-0A	擋圈-----	1		ZMH04012	螺絲-----	2	
FN6024-0A	驅動臂-----	2		ZMH04015	螺絲-----	2	
FN6025-0A	電磁閥-----	2		ZMH06003	螺絲-----	10	
FN6026-0A	滾子-----	2		ZMH06008	螺絲-----	2	
FN6027-0A	按鈕彈簧-----	2		ZMJ03002	螺絲-----	4	
FN6028-0A	剪綫凸輪-----	2		ZMJ05007	螺絲-----	2	
FN6029-0A	復位凸輪(右)-----	1		ZMJ05019	螺絲-----	2	
FN6030-0A	復位凸輪(左)-----	1		ZML04001	螺帽-----	4	
FN6110-0A	動刀-----	2					
FN6111-0A	定刀-----	2					
FN6115-0A	動刀軸-----	2					
FN6117-0A	夾綫彈片-----	2					
FN6118-0A	定刀架-----	2					
FN8140-0A	接綫座-----	1					
FN8141-0A	折板-----	1					
OBM00030	鋼珠-----	2					
RE000040	扣環-----	2					
RU408-11	尼龍夾頭-----	1					
WA050011	墊圈-----	2					
WH208008	墊圈-----	2					
VJT62808B	接頭-----	4					
VW023113	電綫-----	1					
YA030100	銷-----	4					
YA040190	銷-----	2					
YA05012A	銷-----	2					
ZMB04048	螺絲-----	3					
ZMC05013	螺絲-----	2					



16. CSU-8671BFT/LL-1AB、CSU-8672BFT/LL-1AB 控制機構 CONTROL MECHANISM

零件號碼 Parts No.	零件名稱 Name of Parts	件數 QTY	備注 Remarks	零件號碼 Parts No.	零件名稱 Name of Parts	件數 QTY	備注 Remarks
FN1156-4A	接頭----- Tie-in-----	3					
FN1165-0A	配綫板----- Fixed Plate-----	1					
FN1166-0A	感應器----- Inductor-----	1					
FN1167-0A	氣缸----- Air Jar-----	3					
FN1170-0A	氣缸固定座----- Plate-----	1					
FN5100-0A	七連座----- Plate-----	1					
FN5100-0B	七連座----- Plate-----	1					
FN5200-0A	支撐架----- Plate-----	1					
FN5200-0B	支撐架----- Plate-----	1					
FN5400-0A	支撐架----- Plate-----	1					
FN5500-0A	套----- Bushing-----	1					
FN8025-0A	控制面板----- Control Panel-----	2					
RU408-18	配綫鈕----- Wiring-----	1					
U4-B1100	氣管----- Gas Bushing-----	1					
U4-B400	氣管----- Gas Bushing-----	3					
ZMB04082	螺絲----- Screw-----	5					
ZMJ03005	螺絲----- Screw(M3-0.5x6)-----	2					
ZMJ04001	螺絲----- Screw(M4-0.7x8)-----	2					
ZMJ04002	螺絲----- Screw(M4-0.7x10)-----	5					
ZMT05007	螺絲----- Screw-----	6					

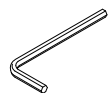


17. CSU-8671BFT/LL-1AB、CSU-8672BFT/LL-1AB 潤滑機構 LUBRICATING MECHANISM

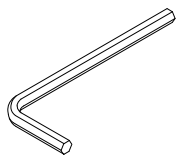
零件號碼 Parts No.	零件名稱 Name of Parts	件數 QTY	備注 Remarks	零件號碼 Parts No.	零件名稱 Name of Parts	件數 QTY	備注 Remarks
FN4470-0A	油泵組件----- Pump Assembly-----	1					
FN4477-0A	油泵支撐----- Plate-----	2					
FN4478-0A	彈簧片----- Spring-----	1					
FN4479-0A	油箱----- Oil Fence -----	1					
FN4480-0A	油箱蓋----- Oil Fence Plate-----	1					
FN4481-0A	油箱固定板----- Plate-----	1					
FN4483-0A	油棉----- Felt-----	1					
FN4484-0A	油盒----- Oil Fence Plate-----	2					
RU408-11	尼龍夾頭----- Wiring Button-----	2					
XA200380	油綫----- Oil Wick-----	1					
XA200550	油綫----- Oil Wick-----	4					
XA201400	油綫----- Oil Wick-----	2					
XA300800	油綫----- Oil Wick-----	1					
XP300190	油管----- Oil Wick-----	1					
XP300290	油管----- Oil Wick-----	1					
XP300720	油管----- Pipe-----	1					
XP350185	油管----- Pipe-----	2					
XP500350	油管----- Pipe-----	1					
XP600080	油管----- Pipe-----	1					
XP600380	油管----- Pipe-----	1					
XP600700	油管----- Pipe-----	3					
YA060096	平行銷----- Pin-----	1					
ZMB04048	螺絲----- Screw(M4-0.7x9.5)-----	4					
ZMB05032	螺絲----- Screw(M5-0.8x12)-----	1					
ZMT04007	螺絲----- Screw-----	4					



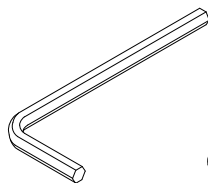
8370910900



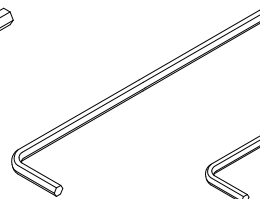
TLA020



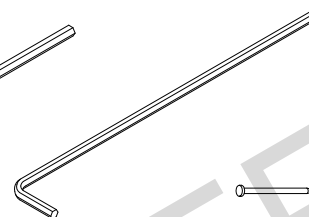
TLA040



TLA050



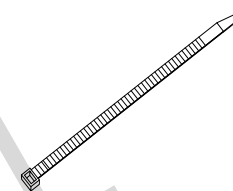
TLL030



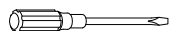
TLL025



FN1272-0A



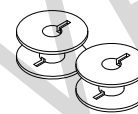
RU010200



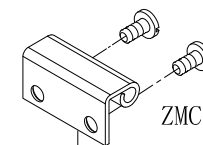
A7010-0A



TLC015

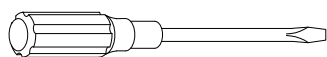


FN3211-0A



ZMC06012

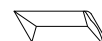
FN7021-0A



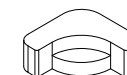
A7010-1A



TRB07x08



INDPX17#21



FN7026-0A

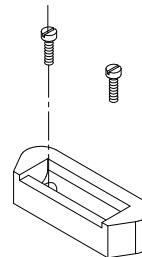


FN7010-0A



G7014-0A

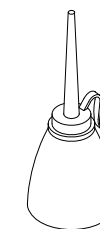
ZMT05007



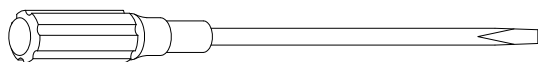
FN7022-0A



FN7143-0A



A7012-2A



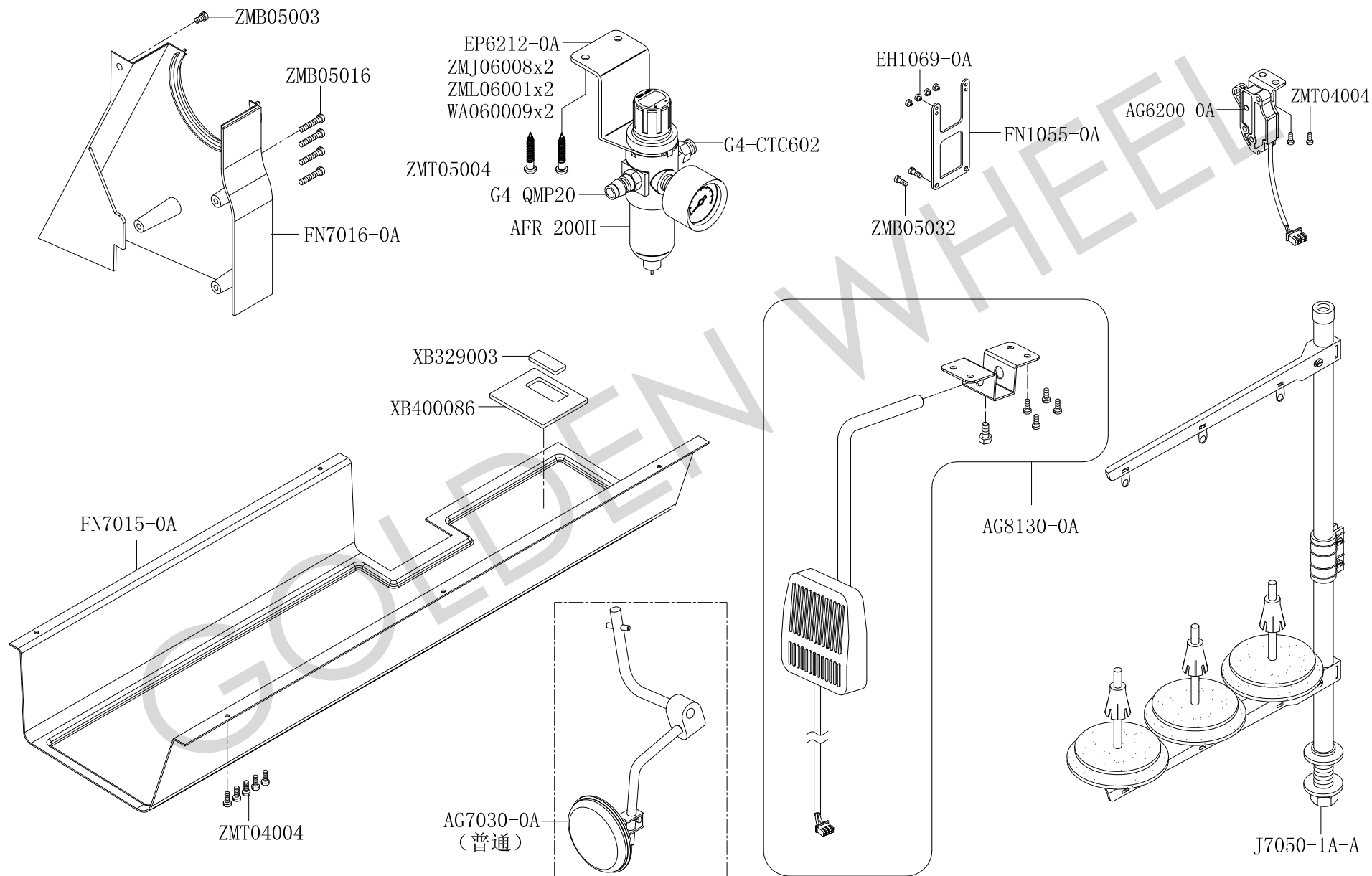
A7010-2A



FN7130-0A

18 CSU-8671BFT/LL-1AB、CSU-8672BFT/LL-1AB 附件 (一) ACCESSORIES (一)

零件號碼 Parts No.	零件名稱 Name of Parts	件數 QTY	備注 Remarks	零件號碼 Parts No.	零件名稱 Name of Parts	件數 QTY	備注 Remarks
8370910900	車頭蓋----- Vinyl Cover-----	1					
A7010-0A	螺絲起子(小)----- Screw Driver(Small)-----	1					
A7010-1A	螺絲起子(中)----- Screw Driver(Medium)-----	1					
A7010-2A	螺絲起子(大)----- Screw Driver(Large)-----	1					
A7012-2A	油壺----- Oilier -----	2					
FN1272-0A	鐵釘----- Nail-----	10					
FN3211-0A	梭芯----- Bobbin-----	4					
FN7010-0A	十字螺絲刀----- Cross Driver-----	1					
FN7021-0A	后鈕扣----- Back Button-----	2					
FN7022-0A	后鈕座----- Back Button Seat-----	2					
FN7026-0A	防震橡膠----- Shockproof Rubber-----	2					
FN7130-0A	鎖定銷----- Lock Pin-----	1					
FN7143-0A	扳手----- Wrench -----	1					
G7014-0A	鑷子----- Forceps-----	1					
INDPX17#21	針----- Needle-----	4					
RU010200	束緊帶----- Tighten Belt-----	5					
TLA020	六角扳手----- Hexagonal Wrench 2.0mm-----	1					
TLA040	六角扳手----- Hexagonal Wrench 4.0mm-----	1					
TLA050	六角扳手----- Hexagonal Wrench 5.0mm-----	1					
TLC015	起子型六角扳手---- Straight Hexagonal Driver-----	1					
TLL025	六角扳手----- Hexagonal Wrench 2.5mm-----	1					
TLL030	六角扳手----- Hexagonal Wrench 3.0mm-----	1					
TRB07x08	開口扳手----- Open-End Wrench -----	1					
ZMC06012	螺絲----- Screw(M6-1.0x10)-----	4					
ZMT05007	木螺絲----- Wood Screw-----	4					



19. CSU-8671BFT/LL-1AB、CSU-8672BFT/LL-1AB 附件 (二) ACCESSORIES (二)

零件號碼 Parts No.	零件名稱 Name of Parts	件數 QTY	備注 Remarks	零件號碼 Parts No.	零件名稱 Name of Parts	件數 QTY	備注 Remarks
AG7030-0A	腳弓組----- Arch Asm-----	1					
EP6212-0A	連接板----- Link Plate-----	1					
FN1055-0A	綫掛----- Thread Guide-----	1					
AFR-200H	過濾氣----- Filtrate Tie-----	1					
EH1069-0A	陶瓷綫掛----- Pottery Thread Guide-----	4					
FN7015-0A	油盤----- Oil Tray-----	1					
FN7016-0A	皮帶罩----- Belt Cover-----	1					
G4-QMP20	接頭----- Tie-in-----	1					
G4-CTC602	接頭----- Tie-in-----	1					
J7050-1A-A	綫架----- Thread Stand-----	1					
WA060009	墊圈----- Washer-----	2					
XB329003	油棉----- Oil Cotton-----	1					
XB400086	油棉----- Oil Cotton-----	1					
ZMB05003	螺絲----- Screw(M5-0.8x7)-----	1					
ZMB05016	螺絲----- Screw(M5-0.8x45)-----	4					
ZMJ06008	螺絲----- Screw(M6-0.8)-----	2					
ZML06001	螺絲----- Screw(M6-0.8)-----	2					
ZMT04004	木螺絲----- Screw-----	5					
ZMT05004	木螺絲----- Screw-----	2					

20.CSU-8671BFT/LL-1AB、CSU-8672BFT/LL-1AB 零件號碼與頁數對照表 NUMERICAL PARTS-LIST

零件號碼 PARTS NO	頁數 PAGE	零件號碼 PARTS NO.	頁數 PAGE	零件號碼 PARTS NO.	頁數 PAGE	零件號碼 PARTS NO.	頁數 PAGE	零件號碼 PARTS NO.	頁數 PAGE
3450322000	16	BB6005ZZ	4	FN1028-7A	8, 10	FN1075-080A	6	FN1173-0A	18
6120122400	4	BB-608ZZ	6, 24, 26	FN1033-0A	8, 10	FN1076-0A	6	FN1180-0A	12
8370910900	34	BB6202ZZ	4	FN1034-0A	8, 10	FN1076-1A	6	FN1181-0A	12
800-3C	4	BB6806ZZ	12, 20	FN1035-0A	8, 10	FN1080-0A	6	FN1183-0A	12
A1019-0A	2	BNHK1210	4	FN1036-0A	8, 10	FN1081-0A	6	FN1184-0A	12
A7010-0A	34	BNHK162216	4	FN1037-0A	8, 10	FN1082-0A	6	FN1191-0A	12
A7010-1A	34	E1021-2A	8, 10	FN1038-0A	8, 10	FN1100-0A	4	FN1192-0A	12
A7010-2A	34	E1025-2A	8, 10	FN1039-0A	8, 10	FN1102-0A	6	FN1200-0A	12
A7012-2A	34	EH1069-0A	2, 36	FN1042-0A	8, 10	FN1103-0A	6	FN1201-0A	12
AB1026-0A	8, 10	EP1015-2A	2	FN1043-0A	8, 10	FN1104-0A	4	FN1202-0A	12
AC1020-3A	2	FN1000-0A	2	FN1044-0A	8, 10, 13, 15	FN1105-0A	4	FN1203-0A	12
AC1021-0A	8, 10	FN1008-0A	2	FN1047-0A	13, 15	FN1106-0A	4	FN1204-0A	12
AC1021-3A	2	FN1009-0A	2	FN1048-0A	9, 11, 13, 15	FN1109-0A	6	FN1205-0A	12
AC1023-0A	8, 10	FN1010-0A	2	FN1049-0A	13, 15	FN1110-0A	6	FN1206-0A	12
AC1030-0A	8, 10	FN1011-0A	2	FN1051-0A	2	FN1114-0A	6	FN1207-0A	12
AC1031-0A	8, 10	FN1012-0A	2	FN1052-0A	2	FN1115-0A	12, 20, 22	FN1210-0A	12
AC1034-1A	8, 10	FN1020-0A	3, 10	FN1053-0A	2	FN1150-0A	12	FN1211-0A	12
AC1034-3A	2	FN1020-1A	8	FN1054-0A	2	FN1151-0A	12	FN1214-0A	18
AC1035-3A	2	FN1020-3A	3	FN1060-0A	6	FN1153-0A	12	FN1215-0B	18
AC1038-3A	2	FN1021-0A	8, 10	FN1060-0B	7	FN1154-0A	12	FN1216-0A	18
AC1042-3A	2	FN1022-0A	8, 10	FN1061-0A	6	FN1155-0A	12	FN1217-0A	18
AC1287-3A	18	FN1025-0A	8, 10	FN1063-0A	6	FN1156-0A	12	FN1218-0A	18
AFR-200H	36	FN1026-0A	8, 10	FN1064-0A	6	FN1156-4A	12, 14, 30	FN1219-0A	18
AG3017-0A	33	FN1027-0A	8, 10	FN1066-0A	6	FN1160-0A	12	FN1223-0A	18
AG7030-0A	41	FN1028-1A	8, 10	FN1070-0A	6	FN1165-0A	30	FN1224-0A	18
AG7031-0A	17	FN1028-2A	8, 10	FN1070-1A	6	FN1166-0A	30	FN1225-0A	18
AG7035-0A	17	FN1028-3A	8, 10	FN1071-0A	6	FN1167-0A	30	FN1226-0A	18
BB3002VV	24, 26	FN1028-4A	8, 10	FN1072-0A	6	FN1170-0A	30	FN1227-0A	18
BB3018VV	24, 26	FN1028-5A	8, 10	FN1073-0A	6	FN1171-0A	18	FN1228-0A	18
BB6004ZZ	4	FN1028-6A	8, 10	FN1074-0A	6	FN1172-0A	18	FN1229-0A	18

20.CSU-8671BFT/LL-1AB、CSU-8672BFT/LL-1AB 零件號碼與頁數對照表 NUMERICAL PARTS-LIST

零件號碼 PARTS NO	頁數 PAGE	零件號碼 PARTS NO.	頁數 PAGE	零件號碼 PARTS NO.	頁數 PAGE	零件號碼 PARTS NO.	頁數 PAGE	零件號碼 PARTS NO.	頁數 PAGE
FN1229-1A	18	FN1288-0A	12	FN2250-0A	2	FN4009-0B	29	FN4046-0A	6
FN1230-0A	18	FN1289-0A	12	FN2251-0A	2	FN4010-0A	4	FN4047-0A	20
FN1231-0A	18	FN1290-0A	12	FN2252-0A	2	FN4011-0A	4	FN4047-1A	12
FN1235-08C	12	FN1292-0A	12	FN3210-0A	21	FN4012-0A	4	FN4048-0A	20
FN1235-0A	18	FN1293-0A	12	FN3211-0A	34	FN4013-0A	4	FN4049-0A	20
FN1236-0A	18	FN1294-0A	12	FN3212-0A	16	FN4013-1A	4	FN4050-1A	22
FN1237-08C	12	FN1295-0A	12	FN3213-0A	16	FN4013-3A	4	FN4051-0A	20
FN1237-0A	18	FN1310-0A	12	FN3214-0A	16	FN4013-5A	4	FN4052-0A	22
FN1238-0A	18	FN1311-0A	12	FN3215-0A	16	FN4013-6A	5	FN4053-0A	20
FN1239-0A	18	FN1312-0A	12	FN3216-0A	16	FN4013-7A	5	FN4054-0A	20
FN1240-0A	12	FN1313-0A	12	FN3217-0A	16	FN4013-8A	5	FN4055-0A	20
FN1255-0A	12, 20, 22	FN1314-0A	12, 20	FN3218-0A	16	FN4013-0B	5	FN4056-0A	20
FN1268-0A	12, 22	FN1315-0A	12	FN3219-0A	16	FN4013-1B	5	FN4080-080A	2
FN1270-0A	12, 18, 20	FN1318-0A	12	FN3220-0A	16	FN4013-3B	5	FN4081-080A	2
FN1271-0A	12, 18, 20	FN1320-0A	4	FN3221-0A	16	FN4013-5B	5	FN4082-0A	2
FN1272-0A	34	FN1321-0A	4	FN3222-0A	4	FN4014-0A	22	FN4085-0A	2
FN1273-0A	12	FN1322-0A	4	FN3223-0A	16	FN4015-0A	22	FN4086-0A	2, 24, 26
FN1274-0A	12, 20	FN1323-0A	4	FN3224-0A	16	FN4016-0B	22	FN4151-0A	20
FN1275-0A	12, 20	FN1335-0A	6	FN3225-0A	16	FN4019-0A	22	FN4470-0A	32
FN1276-0A	12	FN1336-0A	6	FN4000-0A	2	FN4020-0A	22	FN4477-0A	32
FN1277-0A	12, 20	FN1359-0A	2	FN4001-0A	26	FN4024-0A	24, 26	FN4478-0A	32
FN1278-0A	12, 20	FN1362-0A	12	FN4001-0B	26	FN4025-0A	24, 26	FN4478-0A	32
FN1279-0A	12	FN1363-0A	12	FN4004-0A	24, 26	FN4026-0A	24, 26	FN4479-0A	32
FN1281-0A	12	FN1365-0A	12	FN4005-0A	24, 26	FN4027-0A	24, 26	FN4480-0A	32
FN1282-0A	12	FN1365-1A	12	FN4006-0A	24	FN4028-0A	24, 26	FN4481-0A	32
FN1283-0A	12	FN1366-0A	12	FN4007-0A	24, 26	FN4029-0A	24, 26	FN4483-0A	32
FN1284-0A	12	FN1366-1A	12	FN4007-0B	29	FN4030-0A	22	FN4484-0A	32
FN1285-0A	12	FN1367-0A	12	FN4007-0B	31	FN4043-0A	6	FN5100-0A	30
FN1286-0A	12	FN1368-0A	2	FN4008-0A	26	FN4044-0A	20	FN5100-0B	30
FN1287-0A	12	FN1492-0A	16	FN4009-0A	24	FN4045-0A	20	FN5200-0A	30

20.CSU-8671BFT/LL-1AB、CSU-8672BFT/LL-1AB 零件號碼與頁數對照表 NUMERICAL PARTS-LIST

零件號碼 PARTS NO	頁數 PAGE	零件號碼 PARTS NO.	頁數 PAGE	零件號碼 PARTS NO.	頁數 PAGE	零件號碼 PARTS NO.	頁數 PAGE	零件號碼 PARTS NO.	頁數 PAGE
FN5200-0B	30	FN6030-0A	28	OBM00080	12	TLA020	34	WA300002	4
FN5400-0A	30	FN6031-0A	24	OPP0050100	12	TLA040	34	WA060009	37
FN6001-0A	24, 26	FN6032-0A	26	OPP0060300	2	TLA050	34	WE000050	18
FN6002-0A	24, 26	FN6051-080A	22	RA100350	4	TLC015	34	WG000030	4
FN6003-0A	24, 26	FN6110-0A	28	RA100420	4	TLL025	34	WH040019	24
FN6004-0A	24, 26	FN6111-0A	28	RA100470	4	TLL030	34	WH205005	26
FN6005-0A	24, 26	FN6115-0A	28	RA300320	24, 26	TRB07x08	34	WH205050	24
FN6006-0A	24	FN6117-0A	28	RB20015B	24, 26	U4-B1100	4, 5, 14	WH208008	28
FN6007-0A	26	FN6118-0A	28	RB200300	4	U4-B400	30	WH208017	22
FN6008-0A	24, 26	FN7010-0A	34	RB300075	24, 26	U4-B630	12	WH216005	12, 20, 22
FN6009-0A	24, 26	FN7015-0A	36	RB300120	6	VJT62808B	28	WH222001	24, 26
FN6010-0A	24, 26	FN7016-0A	36	RE000040	24, 26, 2	VW023113	28	WH225002	4
FN6011-0A	24, 26	FN7021-0A	34	RE000050	12, 16, 18, 20	WA029005	18	XA150125	12, 20
FN6012-0A	24, 26	FN7022-0A	34	RE000060	22	WA030001	8, 10	XA200380	32
FN6013-0A	24, 26	FN7026-0A	34	RE000070	6, 12, 13, 15	WA040017	8, 10	XA200550	32, 35
FN6014-0A	24, 26	FN7130-0A	34	RE000080	18	WA040019	26	XA201400	32, 35
FN6015-0A	24, 26	FN7143-0A	38	RE000101	12, 18, 20	WA040027	6	XA300160	6
FN6016-0A	24, 26	FN8025-0A	30	RU010200	34	WA049005	4	XA300800	32
FN6017-0A	24, 26	FN8140-0A	28	RU20UC05	18	WA049005	13, 15	XB214005	6
FN6018-0A	24, 26	FN8141-0A	28	RU408-11	4, 5, 32, 28	WA049006	6, 24, 18, 26	XB311003	12, 20
FN6019-0A	24, 26	FNT-8672001	2	RU408-18	30	WA049013	24, 26	XB329003	36
FN6020-0A	24, 26	G7014-0A	34	SEC4752000	3	WA050011	28	XB400086	36
FN6021-0A	24, 26	G4-QMP02	37	SEN2600800	3	WA050012	12	XP300190	32
FN6022-0A	24, 26	G4-CTC602	37	SEN0530600	2	WA060029	24, 26	XP300290	32
FN6024-0A	28	INDPX17#21	34	SEN0650600	2, 24, 26	WA060048	6, 12, 18	XP300720	32
FN6025-0A	28	J1034-0A	8, 10	SEN0850600	2	WA080029	13, 15	XP350185	32
FN6026-0A	28	J1035-0A	8, 10	SEN157055A	2	WA080033	24, 26	XP500034	12
FN6027-0A	28	J7050-1A-A	36	SEN2300700	24, 26	WA089013	12	XP500350	32
FN6028-0A	28	OBM00030	28	TC12006200	18, 20	WA208017	6	XP600080	32
FN6029-0A	28	OBM00060	4	TC16012250	12, 13, 15, 20, 22	WA300001	4	XP600380	32

20.CSU-8671BFT/LL-1AB、CSU-8672BFT/LL-1AB 零件號碼與頁數對照表 NUMERICAL PARTS-LIST

零件號碼 PARTS NO	頁數 PAGE	零件號碼 PARTS NO.	頁數 PAGE	零件號碼 PARTS NO.	頁數 PAGE	零件號碼 PARTS NO.	頁數 PAGE	零件號碼 PARTS NO.	頁數 PAGE
XP600700	32	ZMC02004	6	ZMJ04012	6, 12, 18, 20				
YA030100	28	ZMC04010	12	ZMJ04014	18				
YA040190	28	ZMC04029	2, 6, 8, 10	ZMJ05007	28				
YA05012A	28	ZMC05013	2, 28	ZMJ05016	20				
YA050181	12	ZMC06012	34	ZMJ05019	28				
YA050198	6	ZMH03002	6	ZMJ06002	13, 15				
YA060096	32	ZMH04012	28	ZMJ06004	24, 26				
YD014005	6	ZMH04015	28	ZMJ06008	37				
YD025016	8, 10	ZMH05002	13, 15	ZMJ06029	12				
ZMA10003	24, 26	ZMH05009	2, 20, 24, 26	ZMK06032	12				
ZMB01602	24, 26	ZMH06003	4, 6, 12, 18, 20	ZML04001	28				
ZMB02001	18	ZMH06003	20, 28	ZML04010	18				
ZMB02514	6	ZMH06006	4, 6, 12, 16	ZML06001	37				
ZMB03005	8, 10	ZMH06006	18, 20, 22	ZML06002	12				
ZMB03037	18	ZMH06008	33	ZMT03012	16				
ZMB04011	6	ZMH06012	24, 26	ZMT03013	2				
ZMB04033	9, 11, 13, 15	ZMH06014	18	ZMT04004	36				
ZMB04048	4, 6, 18	ZMH06032	12	ZMT04007	32				
ZMB04048	22, 28, 32	ZMH06036	12	ZMT05004	36				
ZMB04071	2, 8, 10, 18	ZMH06037	24, 26	ZMT05007	30, 34				
ZMB04082	30	ZMJ03001	6, 16	ZSN11001	8, 10				
ZMB05003	36	ZMJ03002	28						
ZMB05016	36	ZMJ03004	24, 26						
ZMB05021	12	ZMJ03005	2, 8, 10, 30						
ZMB05032	32	ZMJ04001	12, 24, 26, 30						
ZMB05033	2	ZMJ04002	6, 12, 16, 18, 30						
ZMB05046	12	ZMJ04005	2, 12						
ZMB05047	4, 12, 18	ZMJ04007	12						
ZMB05050	2	ZMJ04008	6, 18, 20						
ZMB05051	2	ZMJ04010	12						

GOLDEN WHEEL



啓翔股份有限公司
CHEE SIANG INDUSTRIAL CO.,LTD.

NO.32 WU CHUAN 7TH ROAD,WU KU INDUSTRIAL AREA,
WU KU HSIANG 24248,TAIPEI HSIEN,TAIWAN.