

金輪牌工業用縫紉機

GOLDEN WHEEL INDUSTRIAL SEWING MACHINE

零件分解圖

PARTS BOOK

MODEL CS-747
CS-747L

啟翔股份有限公司
CHEE SIANG INDUSTRIAL CO., LTD.

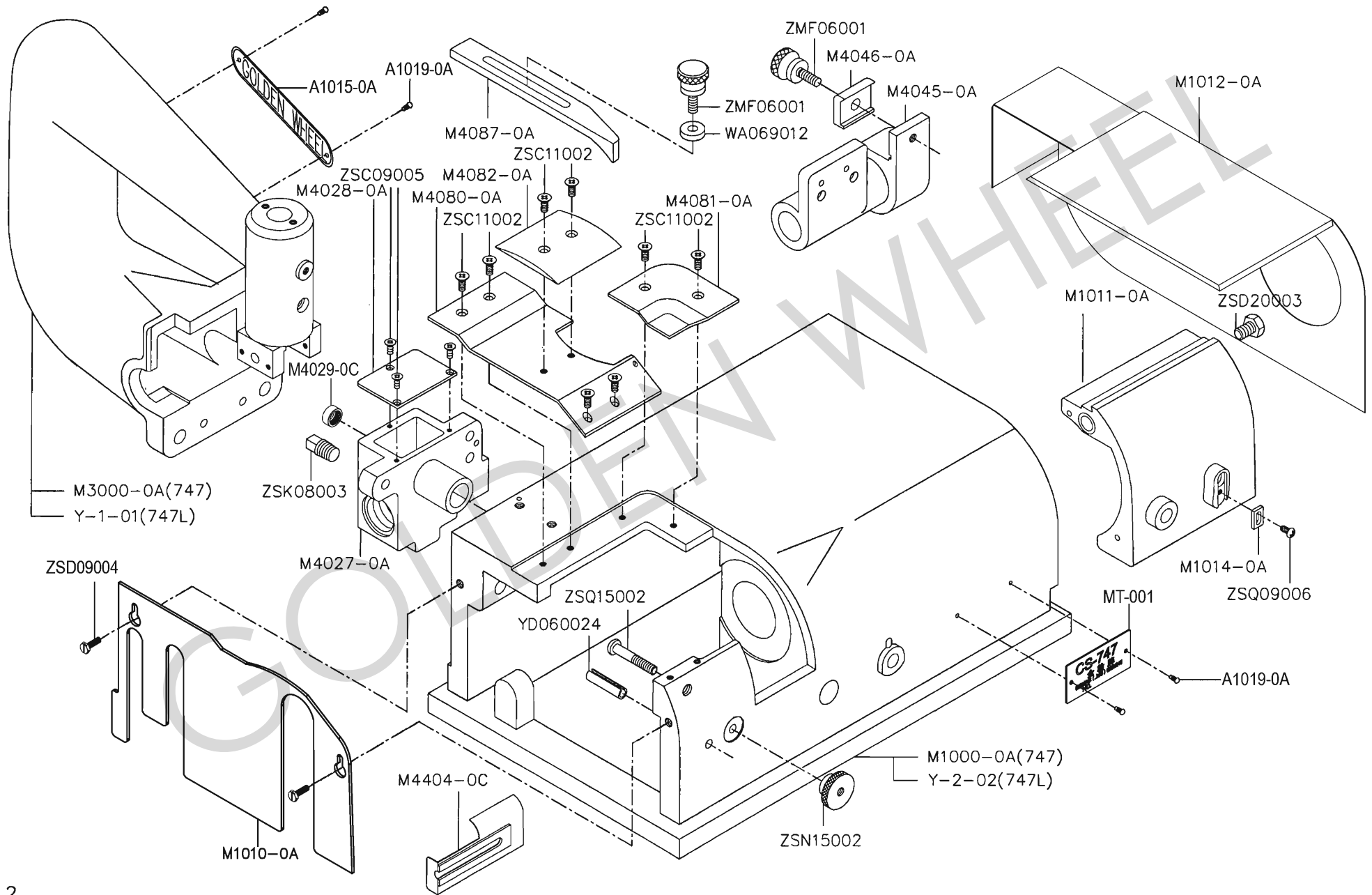
MODEL : CS-747/747L

索引	INDEX	PAGE
A、本體機構	ARM BED AND IT'S ACCESSORIES	2-3
B、押棒機構	PRESSER FOOT MECHANISM	4-5
C、刀軸機構	KNIFE SHAFT MECHANISM	6-9
D、送料與磨刀機構	FEEDING MECHANISM AND KNIFE GRINDING MECHANISM	10-11
E、磨刀機構	KINFE GRINDING MECHANISM	12-13
F、送料機構	FEEDING MECHANISM	14-15
G、送料調整機構	FEED REGULATING	16-17
H、附件	ACCESSORIES	18-19
I、特別配件組	SPECIAL PARTS	20-21
J、零件號碼與頁數對照	NUMERICAL PARTS-LIST	22-23

A-CS747/747L

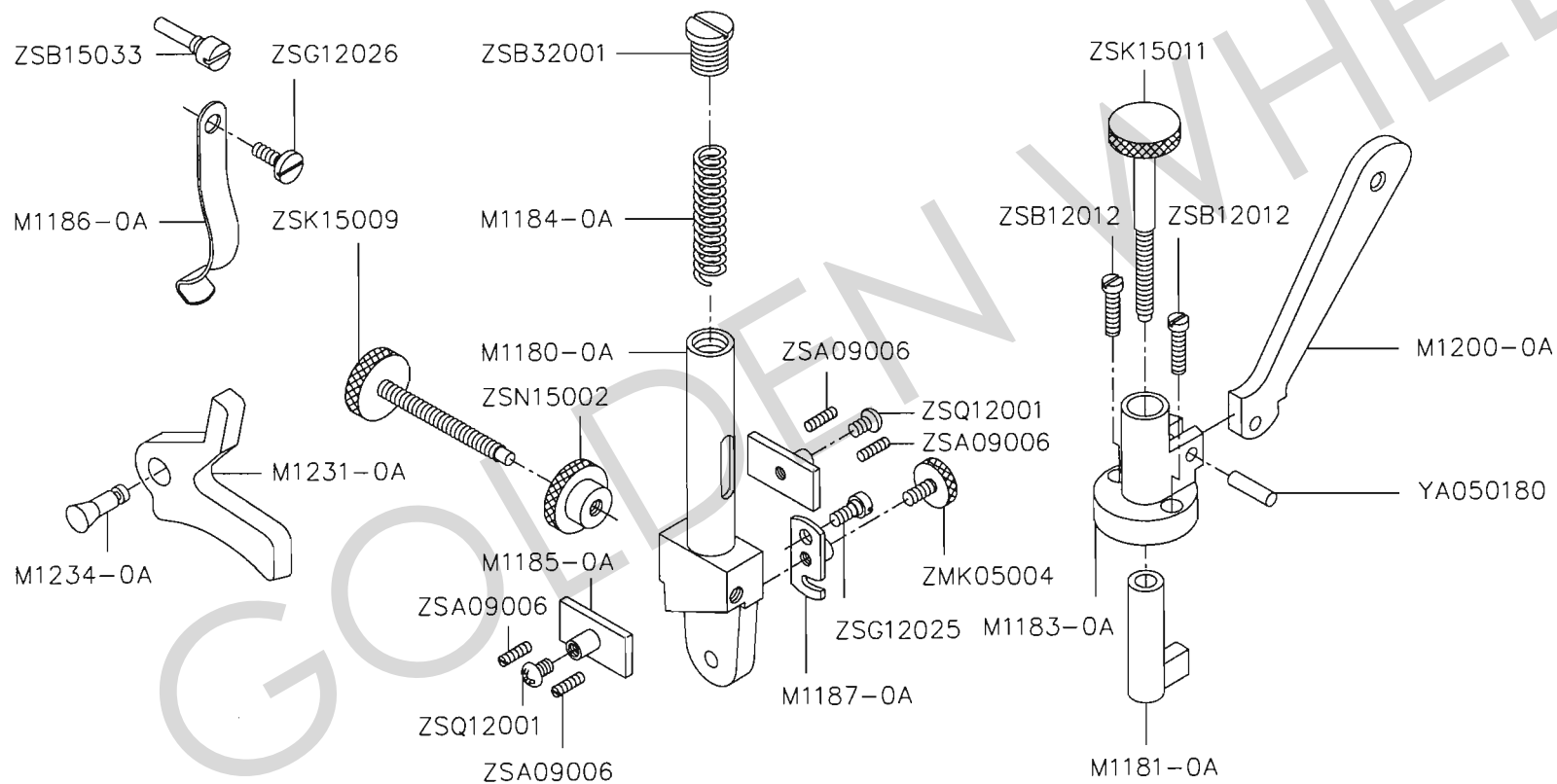
本體部份

ARM BED AND ITS ACCESSORIES



A、CS-747/747L 本體機構 ARM BED AND IT'S ACCESSORIES

零件號碼 Part No	零件名稱	Name of Part	件數 747	Q, TY 747L	備註 Remarks
A1015-0A	銘板	Plate	1	1	
A1019-0A	铆釘	Rivet	4	4	
M1000-0A	機座	Bed	1	0	
M1010-0A	防塵蓋	Cover	1	1	
M1011-0A	皮帶外蓋	Belt Cover Plate	1	1	
M1012-0A	皮帶上蓋	Belt Cover Lid	1	1	
M1014-0A	離合器控制塊	Clutch Control Block	1	1	
M3000-0A	臂	Arm	1	0	
M4027-0A	齒輪箱	Worm Gear Box	1	1	
M4028-0A	齒輪箱蓋	Worm Gear Box Cover	1	1	
M4029-0C	螺帽	Nut	1	1	
M4045-0A	橫軸後襯套	Transmission Shaft	1	1	
M4046-0A	V皮帶上蓋止塊	Belt Cover Lid Stopper	1	1	
M4080-0A	滑板 A	Slide Plate A	1	1	
M4081-0A	滑板 B	Slide Plate B	1	1	
M4082-0A	滑板 C	Slide Plate C	1	1	
M4087-0A	定規	Ruler	1	1	
M4404-0C	切屑止擋板	Waste Feeder Metals	1	1	
MT-001	銘牌	Name Plate	1	1	
WA069012	平墊圈	Washer	1	1	
Y-1-01	臂	Arm	0	1	
Y-2-02	機座	Bed	0	1	
YD060024	彈簧銷	Spring Pin	1	1	
ZMF06001	螺絲	Screw (M6x1.0x17)	2	2	
ZSC09005	螺絲	Screw (9/64-40x7.5)	3	3	
ZSC11002	螺絲	Screw (11/64-40x9)	8	8	
ZSD09004	螺絲	Screw (9/64-40*9)	2	2	
ZSD20003	螺絲	Screw (5/16-24x21)	1	1	
ZSK08003	螺絲	Screw (PT1/8)	1	1	
ZSL20004	螺帽	Nut (5/16-24x7)	1	1	
ZSN15002	螺帽	Nut (15/64-28x12)	1	1	
ZSQ09006	螺絲	Screw (9/64-40x6)	1	1	
ZSQ15002	螺絲	Screw (15/64-28x31)	1	1	



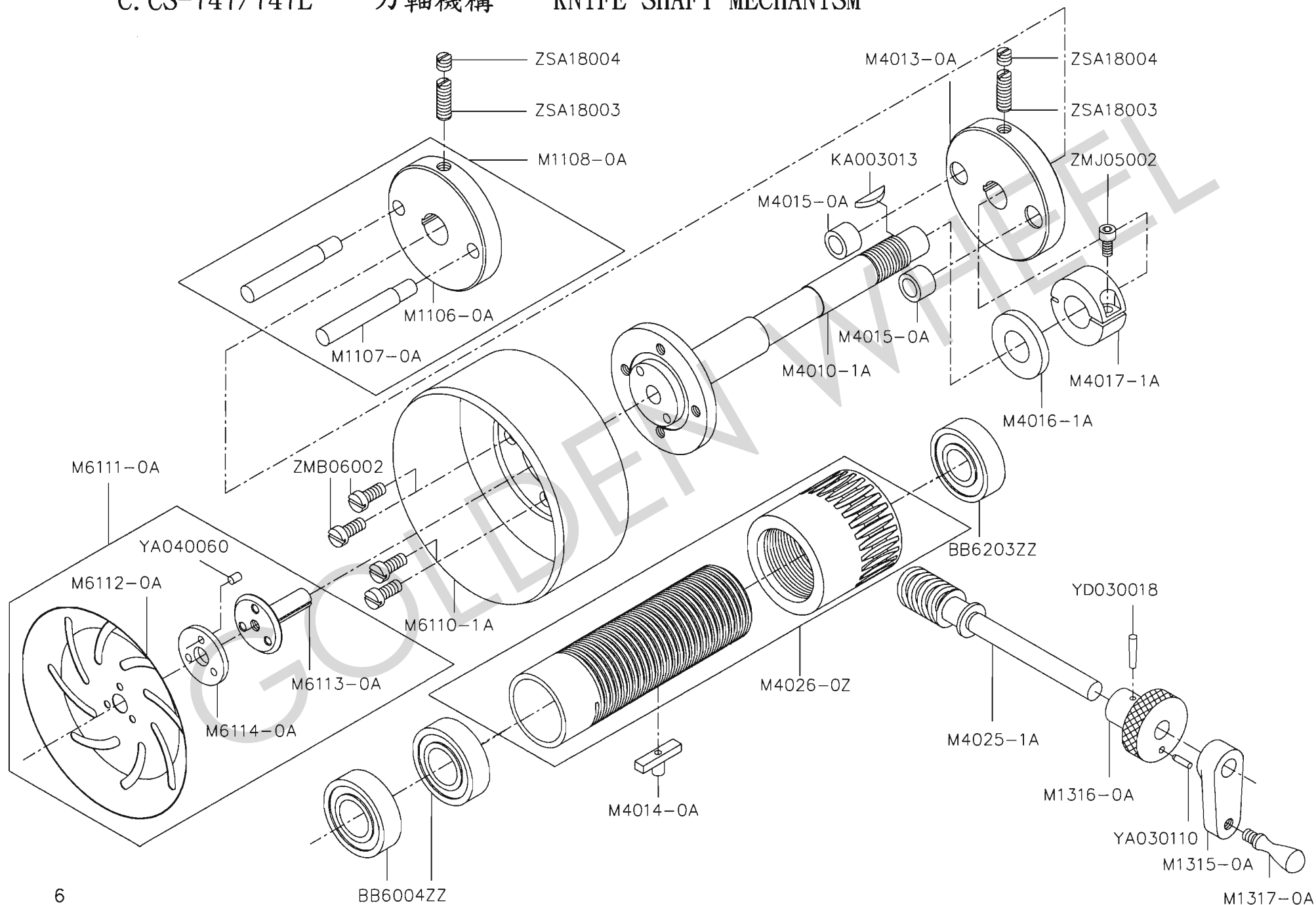
B、CS-747/747L 押腳機構 PRESSER FOOT MECHANISM

零件號碼 Part No	零件名稱	Name of Part	件數 747	Q, TY 747L	備註 Remarks
M1180-0A	押棒	Presser Bar	1	1	
M1181-0A	押棒托桿	Presser Bar Lifter Lever	1	1	
M1183-0A	押棒托架	Presser Bar Lifter Bracket	1	1	
M1184-0A	壓縮彈簧	Presser Bar Spring	1	1	
M1185-0A	押棒固定板	Presser Foot Side Plates	2	2	
M1186-0A	押腳彈簧板	Presser Foot Spring	1	1	
M1187-0A	押腳軸掛鈎	Presser Foot Shaft Hook Metal	1	1	
M1200-0A	押棒提桿	Presser Bar Lifter	1	1	
M1231-0A	押腳	Presser Foot	1	1	
M1234-0A	押腳軸	Presser Foot Shaft	1	1	
YA050180	平行銷	Pin	1	1	
ZMK05004	螺絲	Screw (M5x0.9x11)	1	1	
ZSA09006	螺絲	Screw (9/64-40x10)	4	4	
ZSB12012	螺絲	Screw (3/16-28x15)	2	2	
ZSB15033	螺絲	Screw (15/64-28x23)	1	1	
ZSB32001	螺絲	Screw (1/2-28x13.5)	1	1	
ZSG12025	螺絲	Screw (3/16-26)	1	1	
ZSG12026	螺絲	Screw (3/16-32)	1	1	
ZSK15009	螺絲	Screw (15/64-28)	1	1	
ZSK15011	螺絲	Screw (15/64-28)	1	1	
ZSN15002	螺帽	Nut (15/64-28x12)	1	1	
ZSQ12001	螺絲	Screw (3/16-28x5.4)	2	2	

C. CS-747/747L

刀軸機構

KNIFE SHAFT MECHANISM



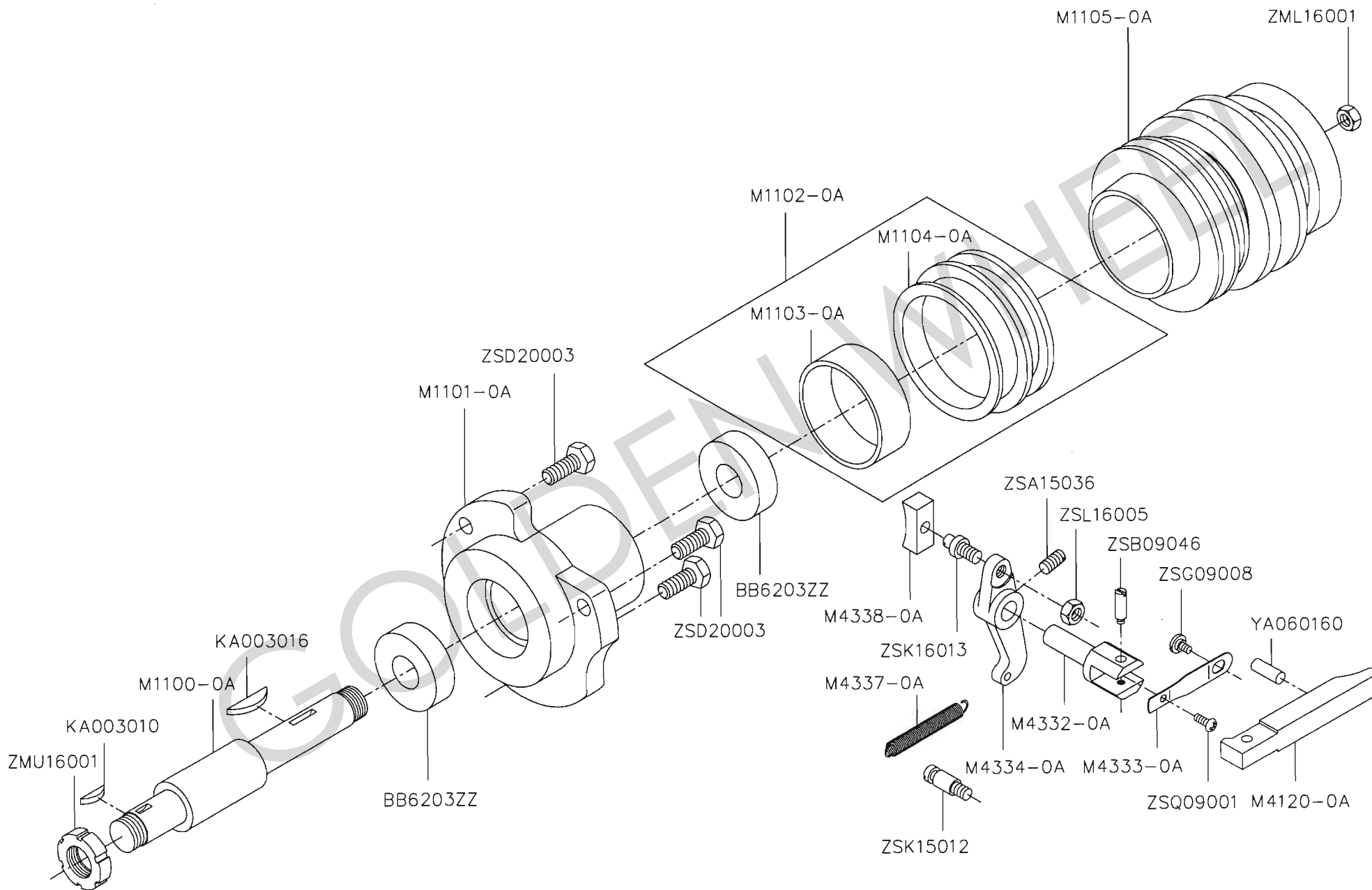
C、CS-747/747L 刀軸機構 KNIFE SHAFT MECHANISM

零件號碼 Part No	零件名稱	Name of Part	件數 Q, TY		備註 Remarks
			747	747L	
BB6004ZZ	滾珠軸承	Ball Bearing	2	2	
BB6203ZZ	滾珠軸承	Ball Bearing	1	1	
KA003013	半圓形鍵	Knife Shaft Key	1	1	
M1106-0A	聯結板(右)	Pulley Shaft Flange	1	1	
M1107-0A	固定軸	Flange Shafts	2	2	
M1108-0A	聯結板組	Pulley Shaft Flange Assy.	1	1	
M1315-0A	刀片調整把手	Knife Adjusting Handle	1	1	
M1316-0A	刀片調整球形柄	Knife Adjusting Knob	1	1	
M1317-0A	刀片調整把手柄	Knife Adjusting Handle Knob	1	1	
M4010-1A	刀軸	Knife Shaft	1	1	
M4012-1A	刀軸套筒	Knife Shaft Lead Pipe	1	1	
M4014-0A	刀軸套筒鍵	Knife Shaft Lead Pipe Key	1	1	
M4015-0A	優力膠襯套	Rubber Bushings	2	2	
M4016-1A	墊圈	Washer	1	1	
M4017-1A	防鬆螺帽	Nut	1	1	
M4025-1A	刀軸蝸桿	Knife Shaft Worm	1	1	
M4026-0Z	刀軸蝸桿組	Knife Shaft Worm	1	1	
M6110-1A	刀片	Knife	1	1	
M6111-0A	刀片盤組	Knife Inner Cover	1	1	
M6112-0A	刀片內蓋	Knife Inner Cover	1	1	
M6113-0A	刀片內蓋導銷	Knife Insert Pin	1	1	
M6114-0A	固定板	Fixing Plate	1	1	
YA030110	平行銷	Pin	1	1	
YA040060	平行銷	Pin	1	1	
YD030018	推拔銷	Taper Pin	1	1	
ZMB06002	螺絲	Screw (M6x1.0x10)	4	4	
ZMJ05002	螺絲	Screw (M5x0.8x1)	1	1	
ZSA18003	螺絲	Screw (9/32-28x1.9)	2	2	
ZSA18004	螺絲	Screw (9/32-28x4.5)	2	2	

C. CS-747/747L

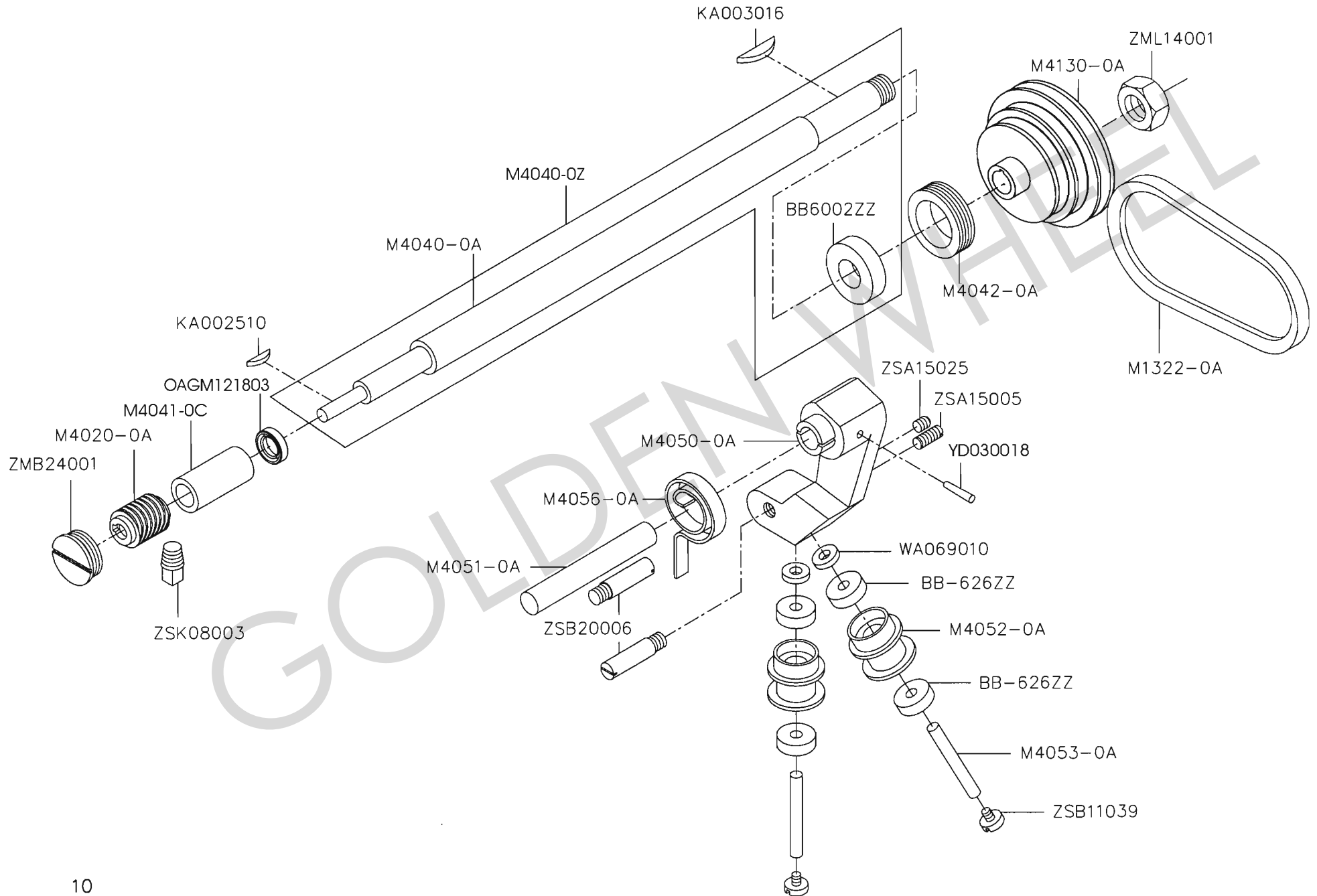
刀軸機構

KNIFE SHAFT MECHANISM



C、CS-747/747L 刀軸機構 KNIFE SHAFT MECHANISM

零件號碼 Part No	零件名稱	Name of Part	件數 Q, TY		備註 Remarks
			747	747L	
BB6203ZZ	滾珠軸承	Pulley Shaft Bearings	2	2	
KA003010	半圓形鍵	Pulley Shaft Key (Small)	1	1	
KA003016	半圓形鍵	Pulley Shaft Key (large)	1	1	
M1100-0A	V皮帶輪軸	Pulley Shaft	1	1	
M1101-0A	V皮帶輪軸套管	Pulley Shaft Metal	1	1	
M1102-0A	離合器組	Clutch Assy.	1	1	
M1103-0A	離合器墊環	Clutch Bushing	1	1	
M1104-0A	離合器	Clutch	1	1	
M1105-0A	V皮帶輪	Pulley	1	1	
M4120-0A	離合器把手	Clutch Lever	1	1	
M4332-0A	離合器把手軸	Clutch Lever Shaft	1	1	
M4333-0A	離合器彈簧板	Clutch Lever Spring	1	1	
M4334-0A	離合器臂	Clutch Arm	1	1	
M4337-0A	離合器拉伸彈簧	Clutch Spring	1	1	
M4338-0A	滑動塊	Clutch Slide Block	1	1	
YA060160	平形銷	Pin	1	1	
ZML16001	螺帽	Nut (M16x1.5x7)	1	1	
ZMU16001	螺帽	Nut (M16x1.5x7)	1	1	
ZSA15036	螺絲	Screw (15/64-28x11)	1	1	
ZSB09046	螺絲	Screw (9/64-40x3)	1	1	
ZSD20003	螺絲	Screw (5/16-24x13)	3	3	
ZSG09008	螺絲	Screw (9/64-40)	1	1	
ZSK15012	螺絲	Screw (15/64-28)	1	1	
ZSK16013	螺絲	Screw (1/4-40)	1	1	
ZSL16005	螺帽	Nut (1/4-40x4)	1	1	
ZSQ09001	螺絲	Screw (9/64-40x6)	1	1	



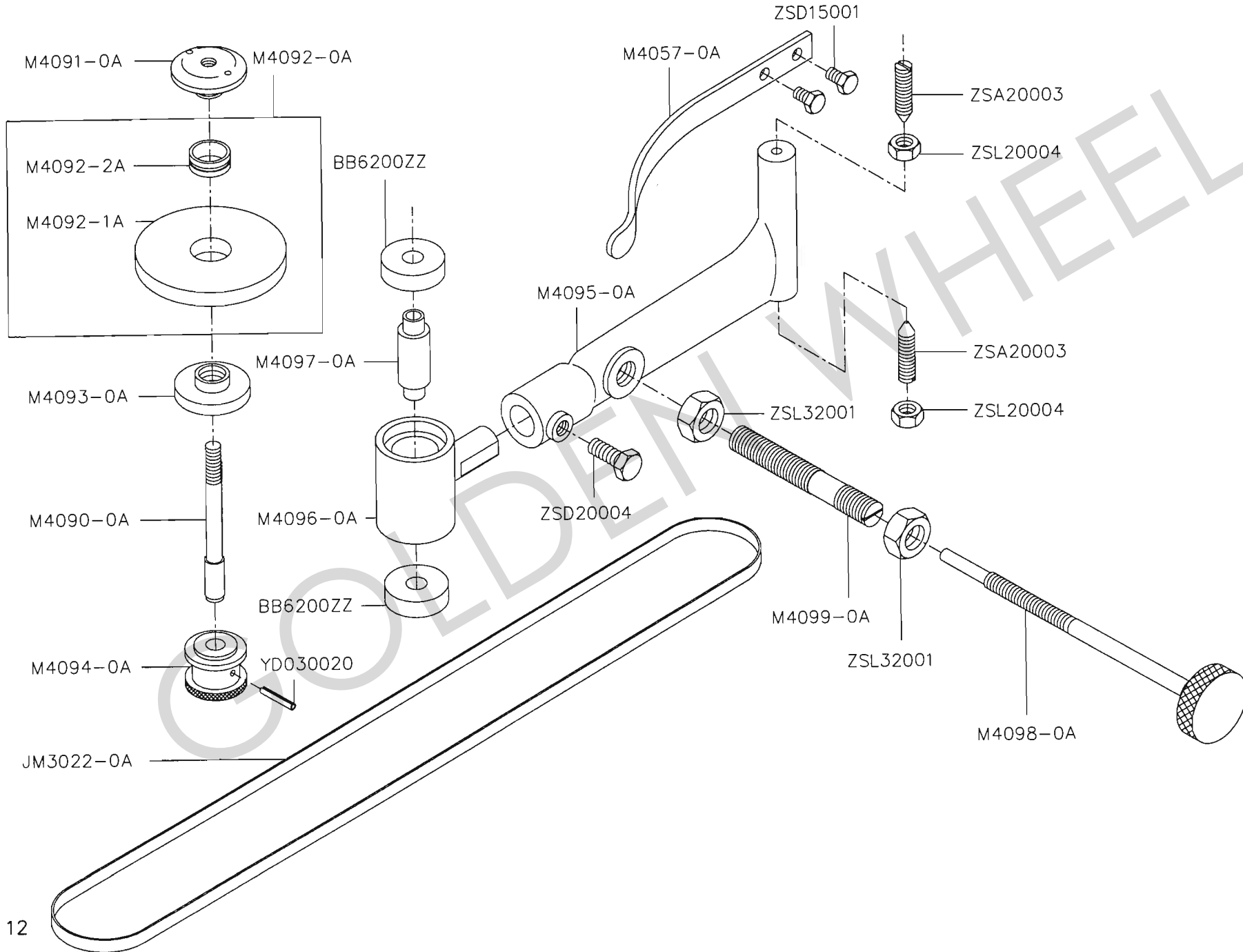
D、CS-747/747L 送料與磨刀機構 FEEDING MECHANISM AND KNIFE GRINDING MECHANISM

零件號碼 Part No	零件名稱	Name of Part	件數 747	Q, TY 747L	備註 Remarks
BB6002ZZ	滾珠軸承	Pulley Shaft Bearings	1	1	
BB-626ZZ	滾珠軸承	Pulley Shaft Bearings	4	4	
KA002510	半圓形鍵	Knife Shaft Key	1	1	
KA003016	半圓形鍵	Knife Shaft Key	1	1	
M1322-0A	橫軸 V 皮帶	Main Shaft Belt	1	1	
M4020-0A	橫軸齒輪	Main Shaft Worm Gear	1	1	
M4040-0A	橫軸	Main Shaft	1	1	
M4040-0Z	橫軸組	Main Shaft	1	1	
M4041-0C	橫軸前套管	Main Shaft Front Bushing	1	1	
M4042-0A	押緊軸承螺絲	Main Shaft Bearing Holder Screw	1	1	
M4050-0A	平皮帶定位托架	Belt Guide Bracket	1	1	
M4051-0A	平皮帶定位托架軸	Belt Guide Bracket Shaft	1	1	
M4052-0A	平皮帶輪	Belt Guide Pulleys	2	2	
M4053-0A	平皮帶輪軸	Belt Guide Pulley Shafts	2	2	
M4056-0A	平皮帶托架彈簧	Belt Guide Bracket Spring	1	1	
M4130-0A	V 型皮帶輪	Main Shaft Pulley	1	1	
OAGM121803	油封	Oil Seal	1	1	
WA069010	平墊圈	Washer	2	2	
YD030018	推拔銷	Taper Pin	1	1	
ZMB24001	螺絲	Screw (M24x1.0x7)	1	1	
ZML14001	螺帽	Nut (M14x1.5x8)	1	1	
ZSA15005	螺絲	Screw (15/64-28x13)	1	1	
ZSA15025	螺絲	Screw (15/64-28x6)	1	1	
ZSB11039	螺絲	Screw (11/64-40x5.5)	2	2	
ZSB20006	螺絲	Screw (5/16-24x8)	2	2	
ZSK08003	螺絲	Screw (1/8-28)	1	1	

E. CS-747/747L

磨刀機構

KNIFE GRINDING MECHANISM



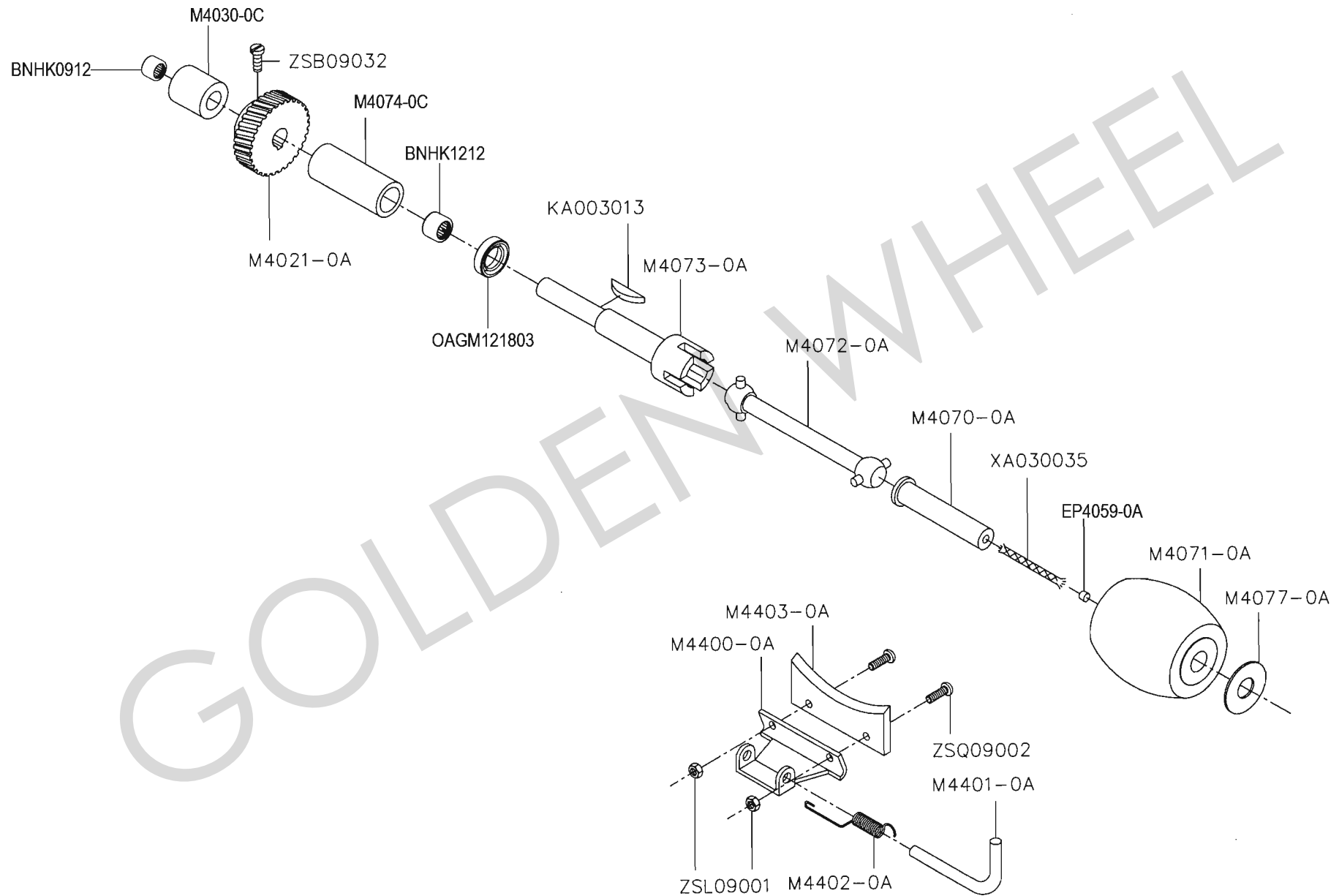
E、CS-747/747L 磨刀機構 KNIFE GRINDING MECHANISM

零件號碼 Part No	零件名稱	Name of Part	件數 747	Q, TY 747L	備註 Remarks
BB6200ZZ	滾珠軸承	Pulley Shaft Bearings	2	2	
JM3022-0A	磨刀石軸平皮帶	Grindstone Shaft Belt	1	1	
M4057-0A	磨刀石軸托架臂彈簧	Grindstone Shaft Bracket Arm Spring	1	1	
M4090-0A	磨刀石軸	Grindstone Shaft	1	1	
M4091-0A	磨刀石固定螺絲	Grindstone Set Screw	1	1	
M4092-0A	磨刀石	Grindstone	1	1	
M4092-1A	砥石	Grindstone	1	1	
M4092-2A	砂輪鉛套	Grindstone Hub	1	1	
M4093-0A	磨刀石固定螺帽	Grindstone Set Nut	1	1	
M4094-0A	磨刀石軸平皮帶輪	Grindstone Shaft Pulley	1	1	
M4095-0A	磨刀石軸托架臂	Grindstone Shaft Bracket Arm	1	1	
M4096-0A	磨刀石軸托架	Grindstone Shaft Bracket	1	1	
M4097-0A	磨刀石軸定位柱	Grindstone Shaft Bearing Holding Roller	1	1	
M4098-0A	磨刀石軸調整螺絲	Grindstone Adjusting Screw	1	1	
M4099-0A	磨刀石軸調整螺椿	Grindstone Adjusting Screw Pipe	1	1	
YD030020	彈簧銷	Spring	1	1	
ZSA20003	螺絲	Screw (5/16-24x32)	2	2	
ZSD15001	螺絲	Screw (15/64-28x14)	2	2	
ZSD20004	螺絲	Screw (5/16-24x13)	1	1	
ZSL20004	螺帽	Nut (5/16-24x7)	2	2	
ZSL32001	螺帽	Nut (1/2-28x7)	2	2	

F. CS-747/747L

送料機構

FEEDING MECHANISM



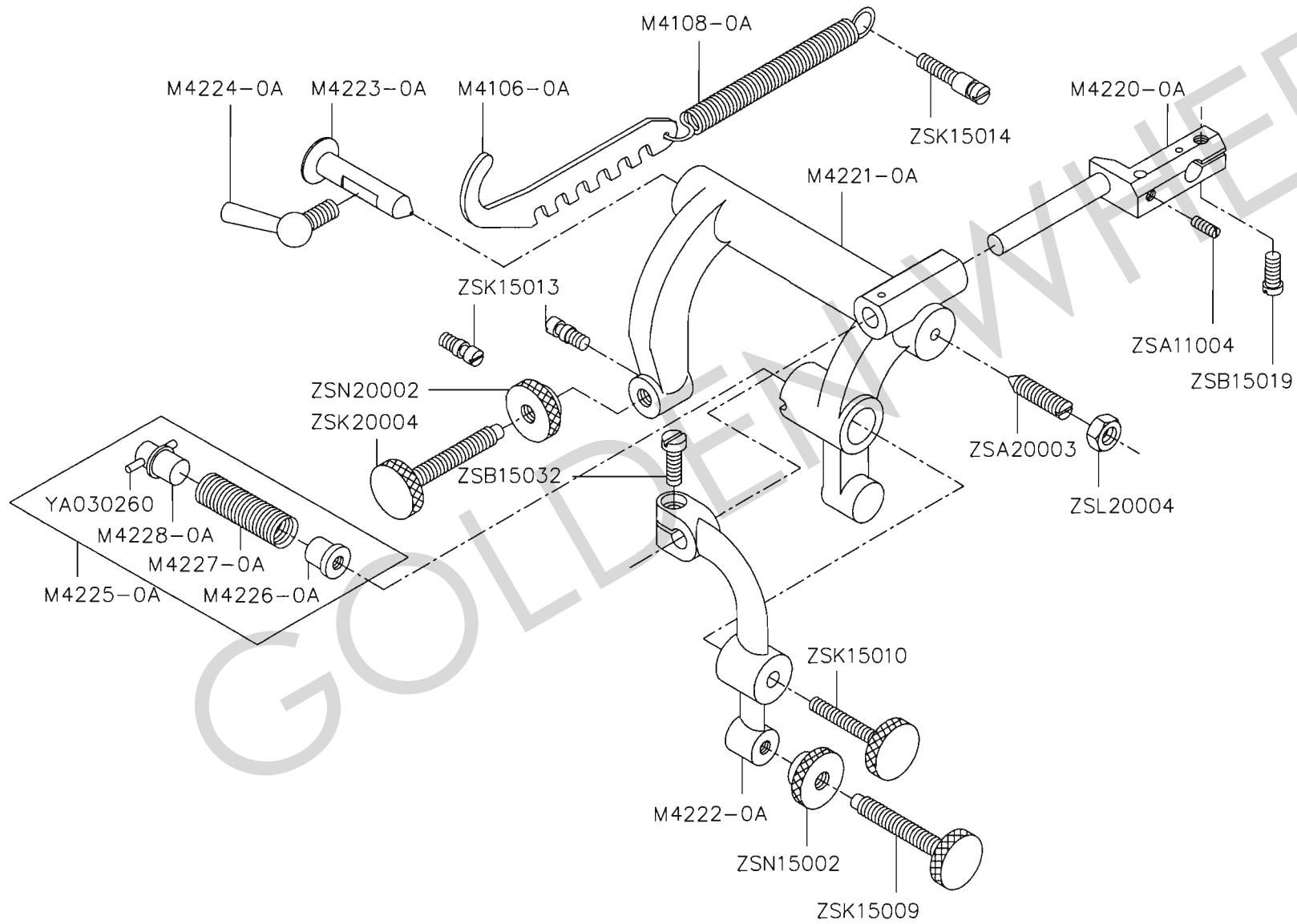
F、CS-747/747L 送料機構 FEEDING MECHANISM

零件號碼 Part No	零件名稱	Name of Part	件數 747	Q, TY 747L	備註 Remarks
KA003013	半圓形鍵	Pulley Shaft Bearings	1	1	
BNHK0912	軸承	Bearings	1	1	
BNHK1212	軸承	Bearings	1	1	
EP4059-0A	塞頭	Roller Shaft Oil Seal Plug	1	1	
M4021-0A	蝸輪	Main Shaft Worm Gear Wheel	1	1	
M4070-0A	滾輪軸	Roller Shaft	1	1	
M4071-0A	滾輪	Roller	1	1	
M4072-0A	驅動軸連接桿	Roller Drining Shaft Join	1	1	
M4073-0A	滾輪驅動軸	Roller Driving Shaft	1	1	
M4074-0C	驅動軸套管(1)	Roller Driving Shaft Metal (1)	1	1	
M4030-0C	驅動軸套管(2)	Roller Driving Shaft Metal (2)	1	1	
M4077-0A	平墊圈	Roller Washer	1	1	
M4400-0A	清除固定板	Waste Clear Metal	1	1	
M4401-0A	固定軸	Waste Clear Metal Shaft	1	1	
M4402-0A	彈簧	Waste Clear Metal Spring	1	1	
M4403-0A	清除板	Waste Clear Metal Leather	1	1	
OAGM121803	油封	Oil Seat	1	1	
XA030035	油線	Wick	1	1	
ZSB09032	螺絲	Screw (9/64-40x8.5)	1	1	
ZSL09001	螺帽	Nut (9/64-40x3)	2	2	
ZSQ09002	螺絲	Screw (9/64-40x9.5)	2	2	

G. CS-747/747L

送料調整機構

FEED REGULATING MECHANISM



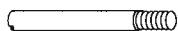
G、CS-747/747L 送料調整機構 FEED REGULATING MECHANISM

零件號碼 Part No	零件名稱	Name of Part	件數 Q, TY		備註 Remarks
			747	747L	
M4106-0A	拉伸彈簧掛鉤	Roller Bracket Arm Spring Hook Metal	1	1	
M4108-0A	拉伸彈簧	Roller Bracket Arm Spring	1	1	
M4220-0A	滾輪托架	Roller Bracket	1	1	
M4221-0A	滾輪托架臂	Roller Bracket Arm	1	1	
M4222-0A	滾輪托架回轉臂	Roller Bracket Turning Arm	1	1	
M4223-0A	托架臂中心銷	Roller Bracket Arm Center Pin	1	1	
M4224-0A	固定螺絲	Roller Bracket Arm center Pin Screw	1	1	
M4225-0A	拉伸彈簧組	Roller Bracket Turning Arm Spring	1	1	
M4226-0A	調整螺帽	Adjusting Nut	1	1	
M4227-0A	拉伸彈簧	Tension Spring	1	1	
M4228-0A	彈簧座	Spring Holder	1	1	
YA030260	平行銷	Pin	1	1	
ZSA11004	螺絲	Screw (11/64-40x3.5)	1	1	
ZSA20003	螺絲	Screw (5/16-24x32)	1	1	
ZSB15019	螺絲	Screw (15/64-28x9)	1	1	
ZSB15032	螺絲	Screw (15/64-28x14)	1	1	
ZSK15009	螺絲	Screw (15/64-28)	1	1	
ZSK15010	螺絲	Screw (15/64-28)	1	1	
ZSK15013	螺絲	Screw (15/64-28)	2	2	
ZSK15014	螺絲	Screw (15/64-28)	1	1	
ZSK20004	螺絲	Screw (5/16-24)	1	1	
ZSL20004	螺帽	Nut (5/16-24x7)	1	1	
ZSN15002	螺帽	Nut (15/64-28x12)	1	1	
ZSN20002	螺帽	Nut (5/16-24x11)	1	1	

H. CS-747/747L 附件 ACCESSORIES



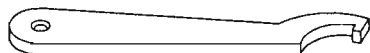
A7001-0A



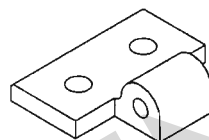
M7021-0A



M7118-0Z



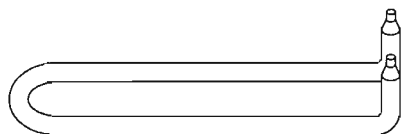
M7143-0A



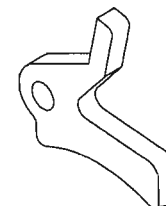
M7022-0A



ZMT06001



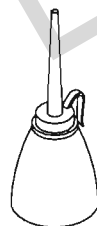
M7142-0A



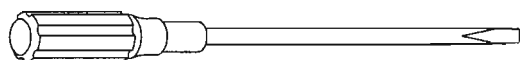
M1231-0A



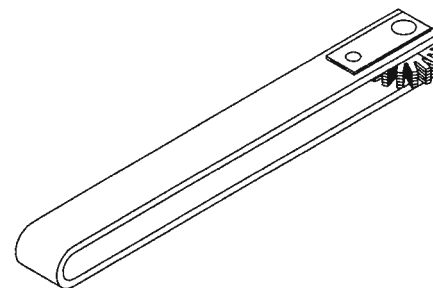
M7144-0A



A7012-1A



A7010-2A



M7110-0A

H、CS-747/747L 附件 ACCESSORIES

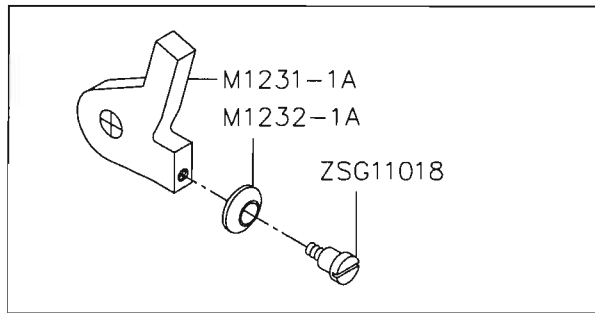
零件號碼 Part No	零件名稱	Name of Part	件數 747	Q, TY 747L	備註 Remarks
A7000-0A	车头盖	Vinyl Cover	1	1	
A7010-2A	螺絲起子(大)	Driver (Large)	1	1	
A7012-1A	油壺(中)	Oiler (Middle)	1	1	
M1231-0A	押板	Pulley Shaft Flange Screws	1	1	
M7021-0A	後鈕固定銷	Hinge Pins	2	2	
M7022-0A	後鈕座	Hinges	2	2	
M7110-0A	磨刀石修平器	Grindstone Ddresser	1	1	
M7118-0Z	磨刀石棒組	Bar Type Grindstone	1	1	
M7142-0A	磨刀石起子	Grindstone Nut Spanner	1	1	
M7143-0A	刀軸螺帽板手	Knife Shaft Spanner	1	1	
M7144-0A	刀片蓋棒	Knife Inner Cover Removr	1	1	
ZMT06001	木螺絲	Screw (5.5x25)	4	4	

GOLDEN WHEEL

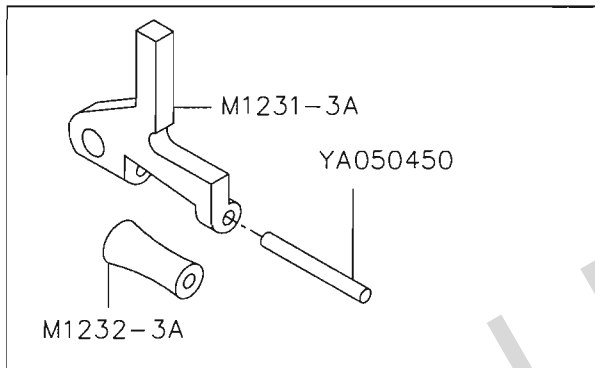
I. CS-747/747L

特別配件組

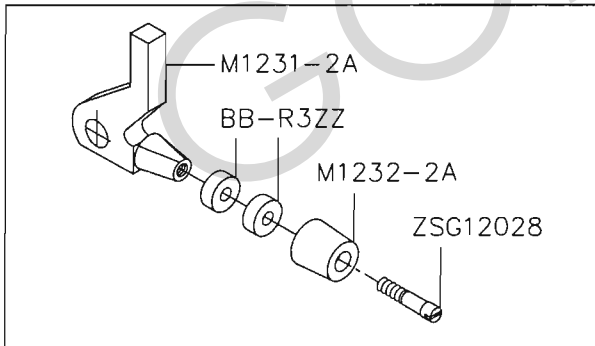
SPECIAL PARTS



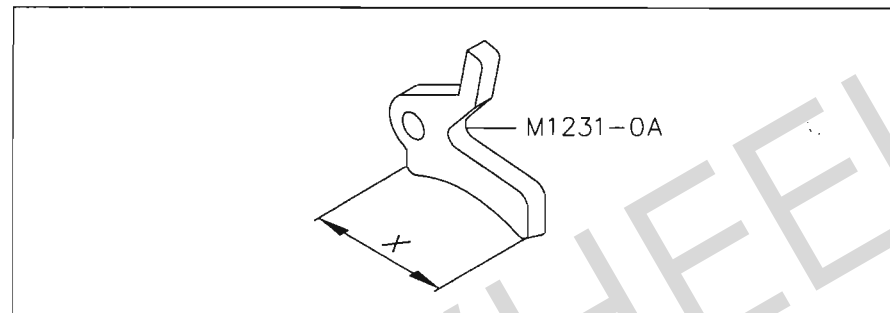
M1230-1A



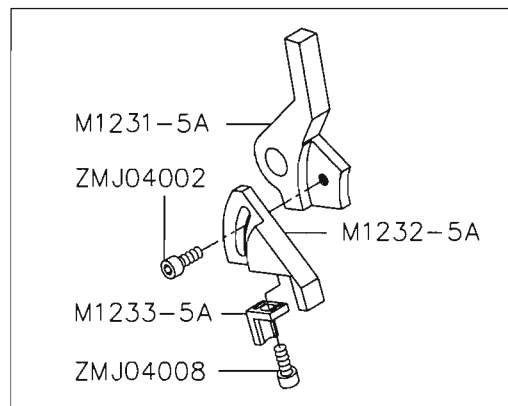
M1230-3A



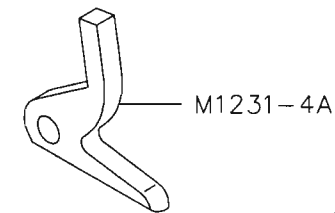
M1230-2A



NO.	X SPECIFICATION	PART NO.
A	56	M1231-010A
B	40	M1231-020A
C	30	M1231-030A
D	25	M1231-040A
E		M1231-050A



M1230-5A



I、CS-747/747L 特別配件組 SPECIAL PARTS

零件號碼 Part No	零件名稱	Name of Part	件數 Q, TY		備註 Remarks
			747	747L	
BB-R3ZZ	滾珠軸承	Pulley Shaft Bearings	1	1	
M1230-1A	押腳組	Presser Foot Assy.	1	1	
M1230-2A	押腳組	Presser Foot Assy.	1	1	
M1230-3A	押腳組	Presser Foot Assy.	1	1	
M1230-5A	押腳組	Presser Foot Assy.	1	1	
M1231-0A	押腳	Presser Foot	1	1	
M1231-010A	押腳 A	Presser Foot A	1	1	
M1231-020A	押腳 B	Presser Foot B	1	1	
M1231-030A	押腳 C	Presser Foot C	1	1	
M1231-040A	押腳 D	Presser Foot D	1	1	
M1231-050A	押腳 E	Presser Foot E	1	1	
M1231-1A	押板	Presser Foot	1	1	
M1231-2A	押板	Presser Foot	1	1	
M1231-3A	押板	Presser Foot	1	1	
M1231-4A	押板	Presser Foot	1	1	
M1231-5A	押板	Presser Foot	1	1	
M1232-1A	滾輪	Roller	1	1	
M1232-2A	滾輪	Roller	1	1	
M1232-3A	滾輪	Roller	1	1	
M1232-5A	滑動板	Slide Plate	1	1	
M1233-5A	固定塊	Block	1	1	
YA050450	平行銷	Pin	1	1	
ZMJ04002	螺絲	Screw (M4x0.7x10)	1	1	
ZMJ04008	螺絲	Screw (M4x0.7x6)	1	1	
ZSG11018	螺絲	Screw (11/64-40)	1	1	
ZSG12028	螺絲	Screw (3/16-24)	1	1	

J、CS-747/747L 零件號碼與頁數對照 NUMERICAL PARTS-LIST

零件號碼 PARTS NO.	頁數 PAGE	零件號碼 PARTS NO.	頁數 PAGE	零件號碼 PARTS NO.	頁數 PAGE	零件號碼 PARTS NO.	頁數 PAGE	零件號碼 PARTS NO.	頁數 PAGE
A7001-0A	18	M1183-0A	4	M1316-0A	6	M4056-0A	10	M4130-0A	10
A7010-2A	18	M1184-0A	4	M1317-0A	6	M4057-0A	12	M4220-0A	16
A7012-1A	18	M1185-0A	4	M1322-0A	10	M4070-0A	14	M4221-0A	16
BB6002ZZ	10	M1186-0A	4	M3000-0A	2	M4071-0A	14	M4222-0A	16
BB6004ZZ	6	M1187-0A	4	JM3022-0A	12	M4072-0A	14	M4223-0A	16
BB6200ZZ	12	M1200-0A	4	M4010-1A	6	M4073-0A	14	M4224-0A	16
BB6203ZZ	6,8	M1230-1A	20	M4013-0A	6	M4074-0A	14	M4225-0A	16
BB-626ZZ	10	M1230-2A	20	M4014-0A	6	M4075-0A	14	M4226-0A	16
BB-R3ZZ	20	M1230-3A	20	M4015-0A	6	M4077-0A	14	M4227-0A	16
KA002510	10	M1230-5A	20	M4016-1A	6	M4080-0A	2	M4228-0A	16
KA003010	8	M1231-010A	20	M4017-1A	6	M4081-0A	2	M4332-0A	8
KA003013	6,14	M1231-020A	20	M4020-0A	10	M4082-0A	2	M4333-0A	8
KA003016	8,10	M1231-030A	20	M4021-0A	14	M4087-0A	2	M4334-0A	8
M1000-0A	2	M1231-040A	20	M4025-1A	6	M4090-0A	12	M4337-0A	8
M1011-0A	2	M1231-050A	20	M4026-0Z	6	M4091-0A	12	M4338-0A	8
M1012-0A	2	M1231-0A	4,18,20	M4027-0A	2	M4092-0A	12	M4400-0A	14
M1014-0A	2	M1231-1A	20	M4029-0C	2	M4092-1A	12	M4401-0A	14
M1100-0A	8	M1231-2A	20	M4028-0A	2	M4092-2A	12	M4402-0A	14
M1101-0A	8	M1231-3A	20	M4040-0A	10	M4093-0A	12	M4403-0A	14
M1102-0A	8	M1231-4A	20	M4040-0Z	10	M4094-0A	12	M4404-0C	2
M1103-0A	8	M1231-5A	20	M4041-0C	10	M4095-0A	12	M6110-1A	6
M1104-0A	8	M1232-1A	20	M4042-0A	10	M4096-0A	12	M6111-0A	6
M1105-0A	8	M1232-2A	20	M4045-0A	2	M4097-0A	12	M6112-0A	6
M1106-0A	6	M1232-3A	20	M4046-0A	2	M4098-0A	12	M6113-0A	6
M1107-0A	6	M1232-5A	20	M4050-0A	10	M4099-0A	12	M6114-0A	6
M1108-0A	6	M1233-5A	20	M4051-0A	10	M4106-0A	16	M7021-0A	18
M1180-0A	4	M1234-0A	4	M4052-0A	10	M4108-0A	16	M7022-0A	18
M1181-0A	4	M1315-0A	6	M4053-0A	10	M4120-0A	8	M7110-0A	18

J、CS-747/747L 零件號碼與頁數對照 NUMERICAL PARTS-LIST

零件號碼 PARTS NO.	頁數 PAGE	零件號碼 PARTS NO.	頁數 PAGE	零件號碼 PARTS NO.	頁數 PAGE	零件號碼 PARTS NO.	頁數 PAGE	零件號碼 PARTS NO.	頁數 PAGE
M7118-0Z	18	ZMU16001	8	ZSK08003	2,10	M7119-0A	18		
M7142-0A	18	ZSA09006	4	ZSK15009	4,16	MT-001	2		
M7143-0A	18	ZSA11004	16	ZSK15010	16	OAGM121803	10, 14		
M7144-0A	18	ZSA15005	10	ZSK15011	4	ZSD09004	2		
WA069010	10	ZSA15025	10	ZSK15012	8				
WA069012	2	ZSA15036	8	ZSK15013	16				
XA030035	14	ZSA18003	6	ZSK15014	16				
Y-1-01	2	ZSA18004	6	ZSK16013	8				
Y-2-02	2	ZSA20003	12,16	ZSK20004	16				
YA030110	6	ZSB09032	14	ZSL09001	14				
YA030260	16	ZSB09046	8	ZSL16005	8				
YA040060	6	ZSB11039	10	ZSL20004	12,16				
YA050180	4	ZSB12012	4	ZSL32001	12				
YA050450	20	ZSB15019	16	ZSN15002	2,4,16				
YA060160	8	ZSB15032	16	ZSN20002	16				
YD030018	6,10	ZSB15033	4	ZSQ09001	8				
YD030020	12	ZSB20006	10	ZSQ09002	14				
YD060024	2	ZSB32001	4	ZSQ09006	2				
ZMB06002	6	ZSC09005	2	ZSQ12001	4				
ZMB24001	10	ZSC11002	2	ZSQ15002	2				
ZMF06001	2	ZSD15001	12	A1015-0A	2				
ZMJ04002	20	ZSD20003	2,8	A1019-0A	2				
ZMJ04008	20	ZSD20004	12	BNHK0912	14				
ZMJ05002	6	ZSG09008	8	BNHK1212	14				
ZMK05004	4	ZSG11018	20	EP4059-0A	14				
ZML14001	10	ZSG12025	4	M1010-0A	2				
ZML16001	8	ZSG12026	4	M4030-0A	14				
ZMT06001	18	ZSG12028	20	M7118-0A	18				